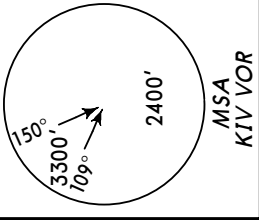


ATIS
125.22

Apt Elev
399'

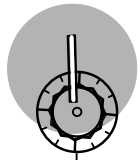
Alt Set: hPa
Trans level: By ATC Trans alt: 4000'



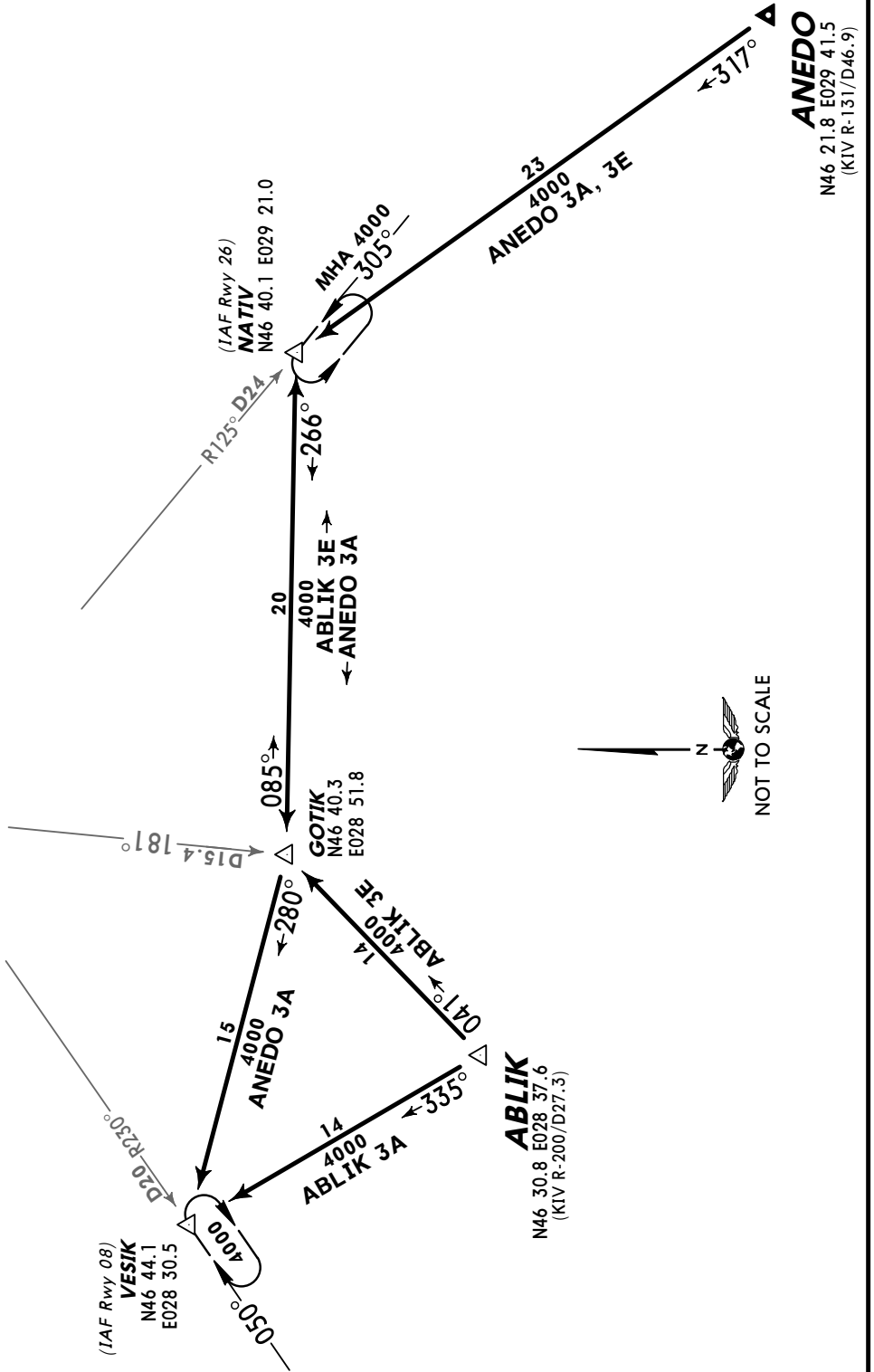
ABLIK THREE ALFA (ABLIK 3A) [ABLI3A]
ANEDO THREE ALFA (ANEDO 3A) [ANED3A]
RWY 08 ARRIVALS

ABLIK THREE ECHO (ABLIK 3E) [ABLI3E]
ANEDO THREE ECHO (ANEDO 3E) [ANED3E]
RWY 26 ARRIVALS

NOT FOR OPERATIONAL USE

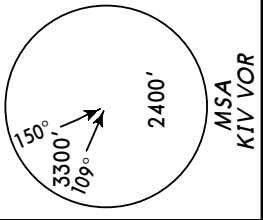


CHISINAU
D 113.7 KIV
N46 55.6 E028 54.3



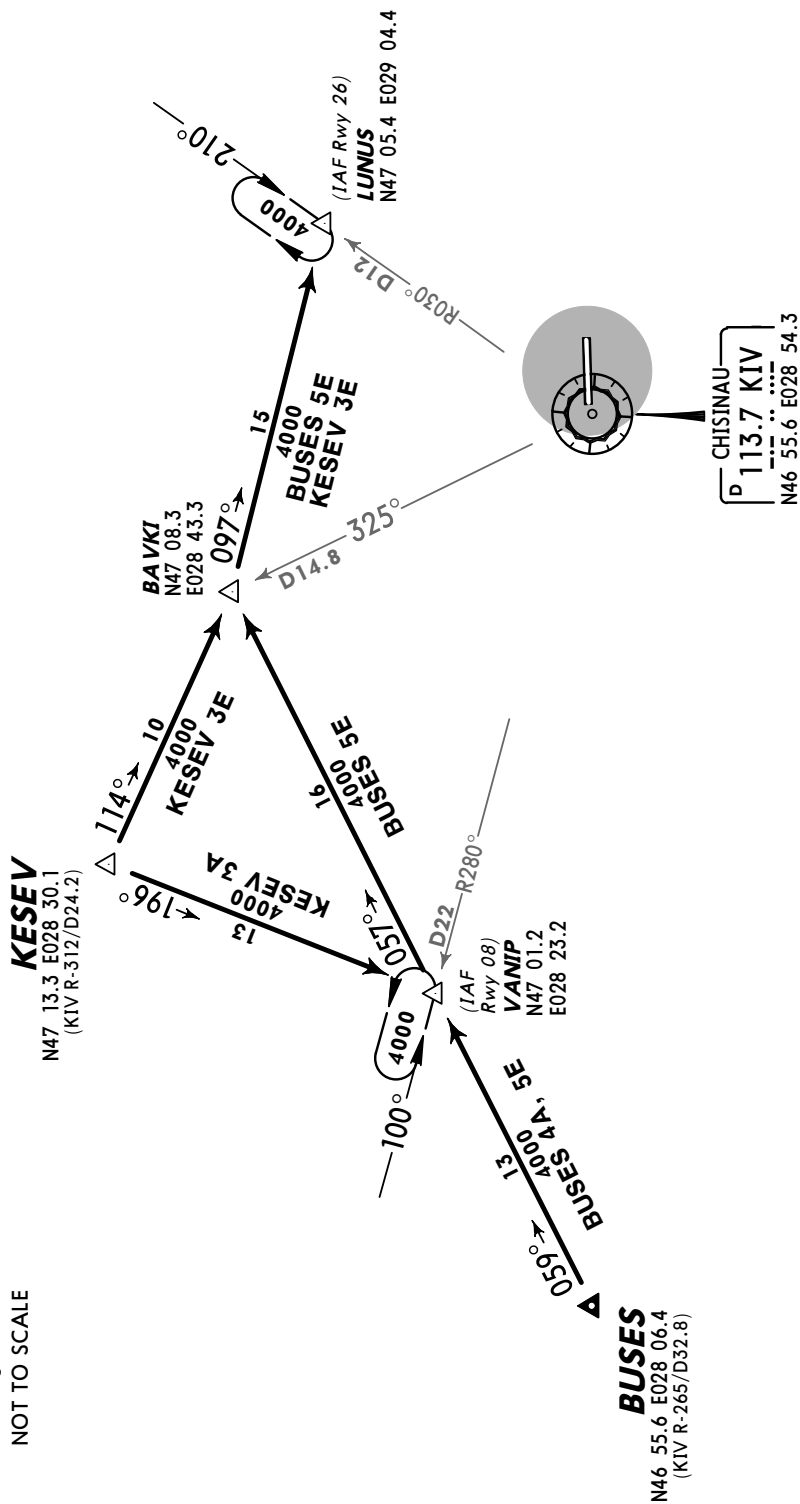
ANEDO
N46 21.8 E029 41.5
(KIV R-131/D46.9)

ATIS 125.22	Apt Elev 399'	Alt Set: hPa Trans level: By ATC Trans alt: 4000'
----------------	------------------	--

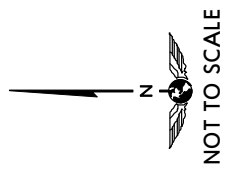


BUSES FOUR ALFA (BUSES 4A) [BUSE4A]
KESEV THREE ALFA (KESEV 3A) [KESE3A]
RWY 08 ARRIVALS

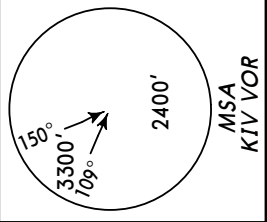
BUSES FIVE ECHO (BUSES 5E) [BUSE5E]
KESEV THREE ECHO (KESEV 3E) [KESE3E]
RWY 26 ARRIVALS



NOT FOR OPERATIONAL USE



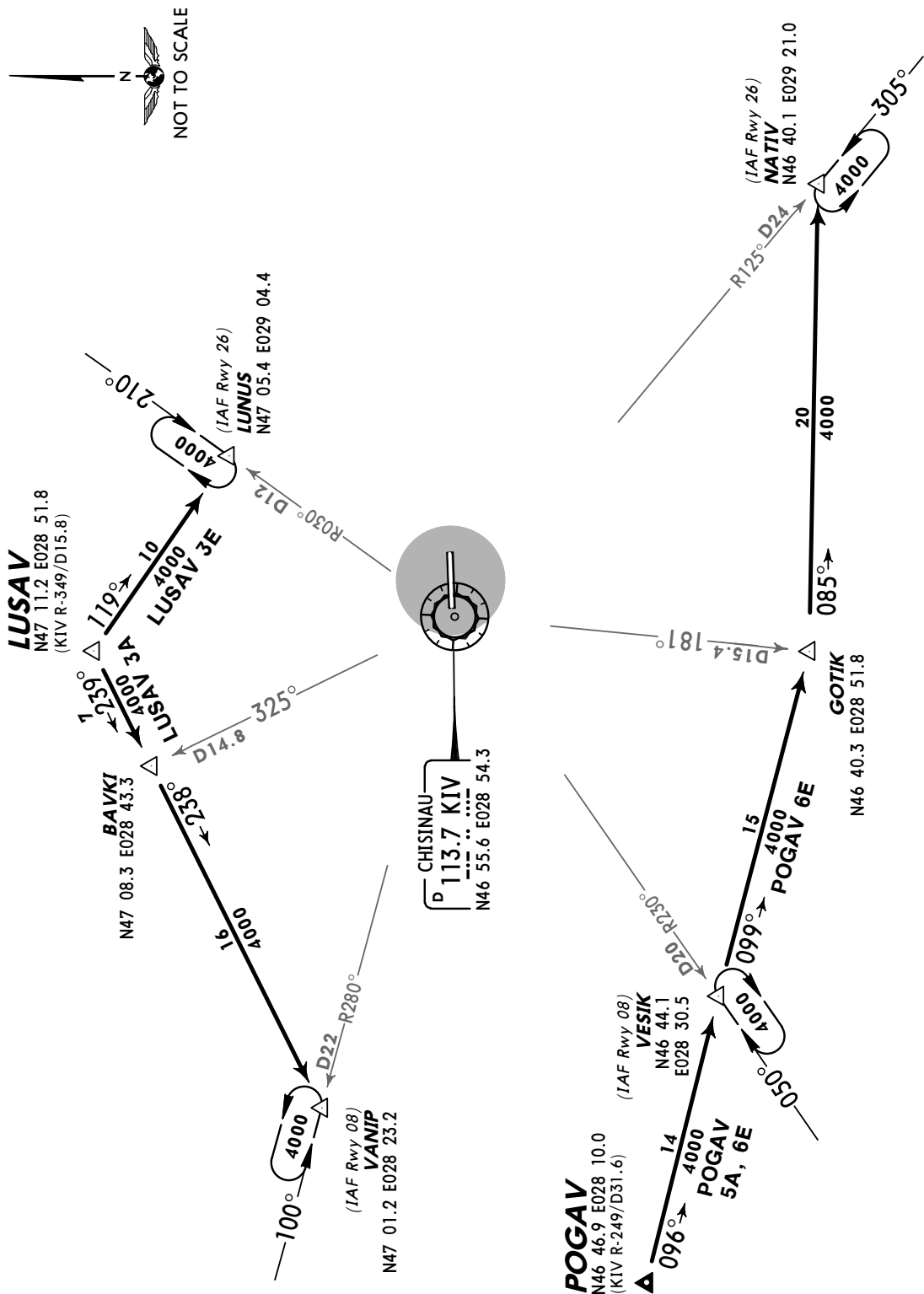
ATIS 125.22	Apt Elev 399'	Alt Set: hPa Trans level: By ATC Trans alt: 4000'
----------------	------------------	--



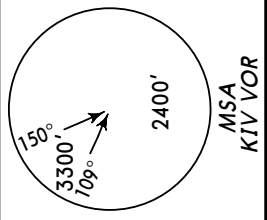
LUSAV THREE ALFA (LUSAV 3A) [LUSA3A]
POGAV FIVE ALFA (POGAV 5A) [POGA5A]
RWY 08 ARRIVALS

LUSAV THREE ECHO (LUSAV 3E) [LUSA3E]
POGAV SIX ECHO (POGAV 6E) [POGA6E]
RWY 26 ARRIVALS

NOT FOR OPERATIONAL USE



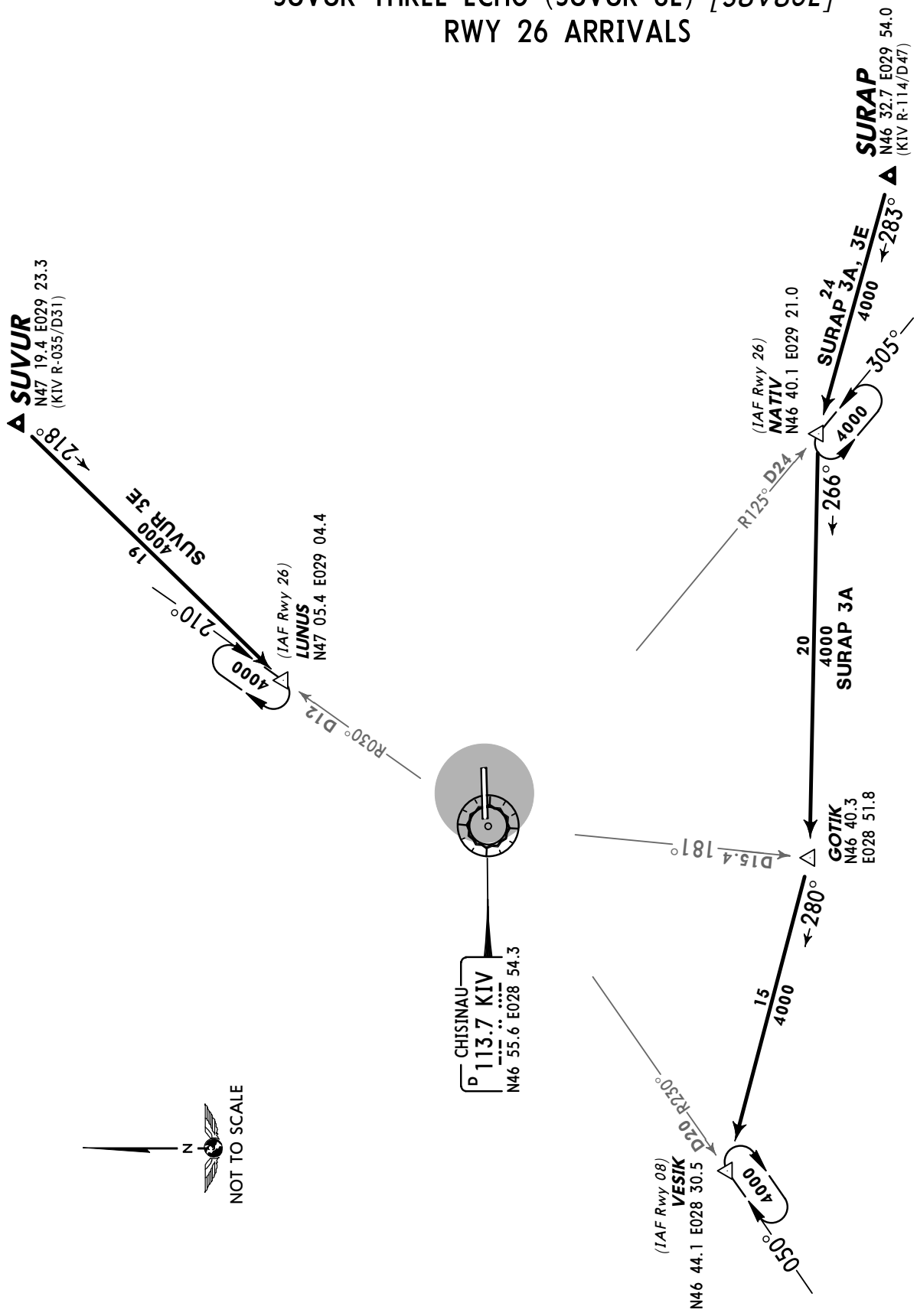
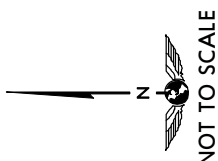
ATIS 125.22	Apt Elev 399'	Alt Set: hPa Trans level: By ATC Trans alt: 4000'
----------------	------------------	--



**SURAP THREE ALFA (SURAP 3A) [SURA3A]
RWY 08 ARRIVAL**

**SURAP THREE ECHO (SURAP 3E) [SURA3E]
SUVUR THREE ECHO (SUVUR 3E) [SUVU3E]
RWY 26 ARRIVALS**

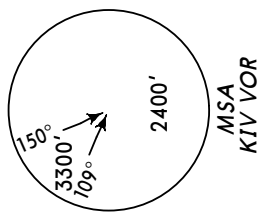
NOT FOR OPERATIONAL USE



ATIS
125.22

Apt Elev
399'

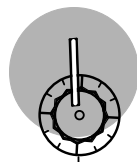
Alt Set: hPa
Trans level: By ATC Trans alt: 4000'



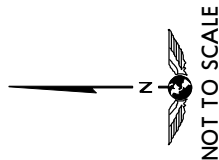
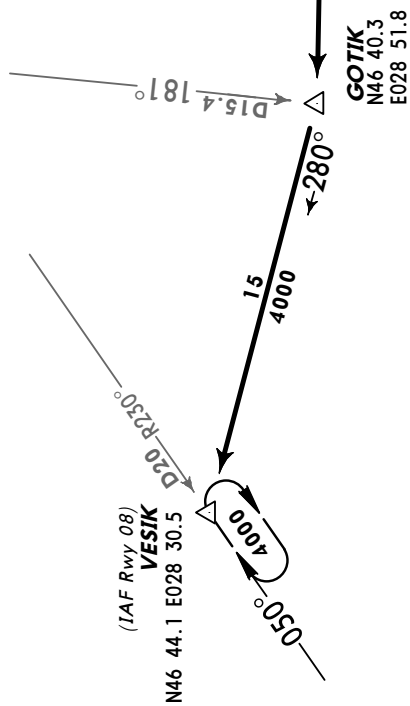
TURSA THREE ALFA
(TURSA 3A) [TURS3A]
TUVAP THREE ALFA
(TUVAP 3A) [TUVA3A]
RWY 08 ARRIVALS

TURSA THREE ECHO
(TURSA 3E) [TURS3E]
TUVAP THREE ECHO
(TUVAP 3E) [TUVA3E]
RWY 26 ARRIVALS

NOT FOR OPERATIONAL USE



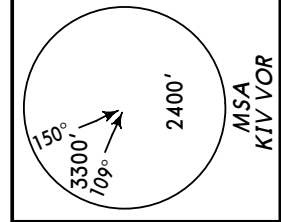
CHISINAU
113.7 KIV
N46 55.6 E028 54.3



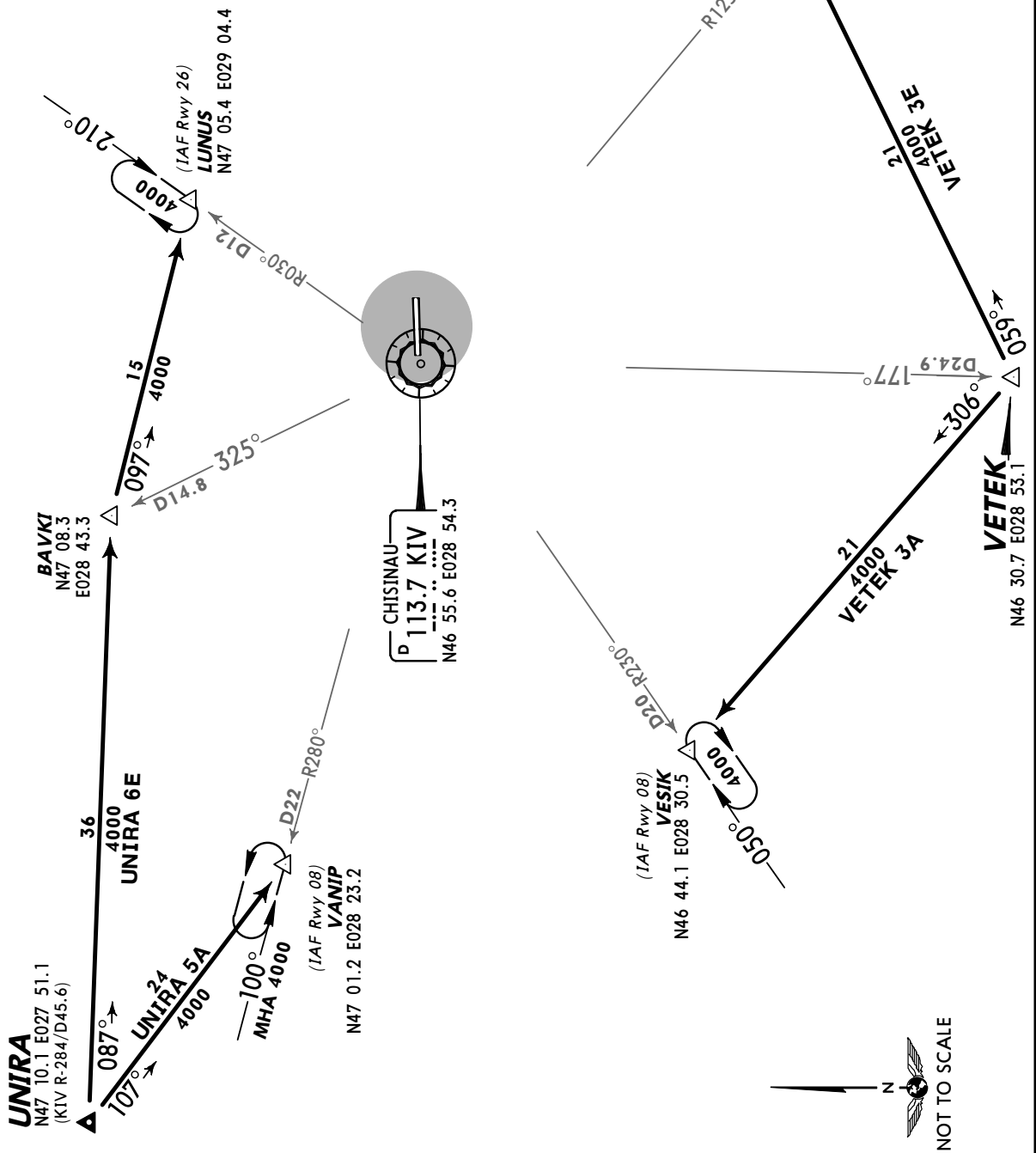
ATIS 125.22	Apt Elev 399'	Alt Set: hPa Trans level: By ATC Trans alt: 4000'
----------------	------------------	--

UNIRA FIVE ALFA (UNIRA 5A) [UNIR5A]
VETEK THREE ALFA (VETEK 3A) [VETE3A]
RWY 08 ARRIVALS

UNIRA SIX ECHO (UNIRA 6E) [UNIR6E]
VETEK THREE ECHO (VETEK 3E) [VETE3E]
RWY 26 ARRIVALS



NOT FOR OPERATIONAL USE

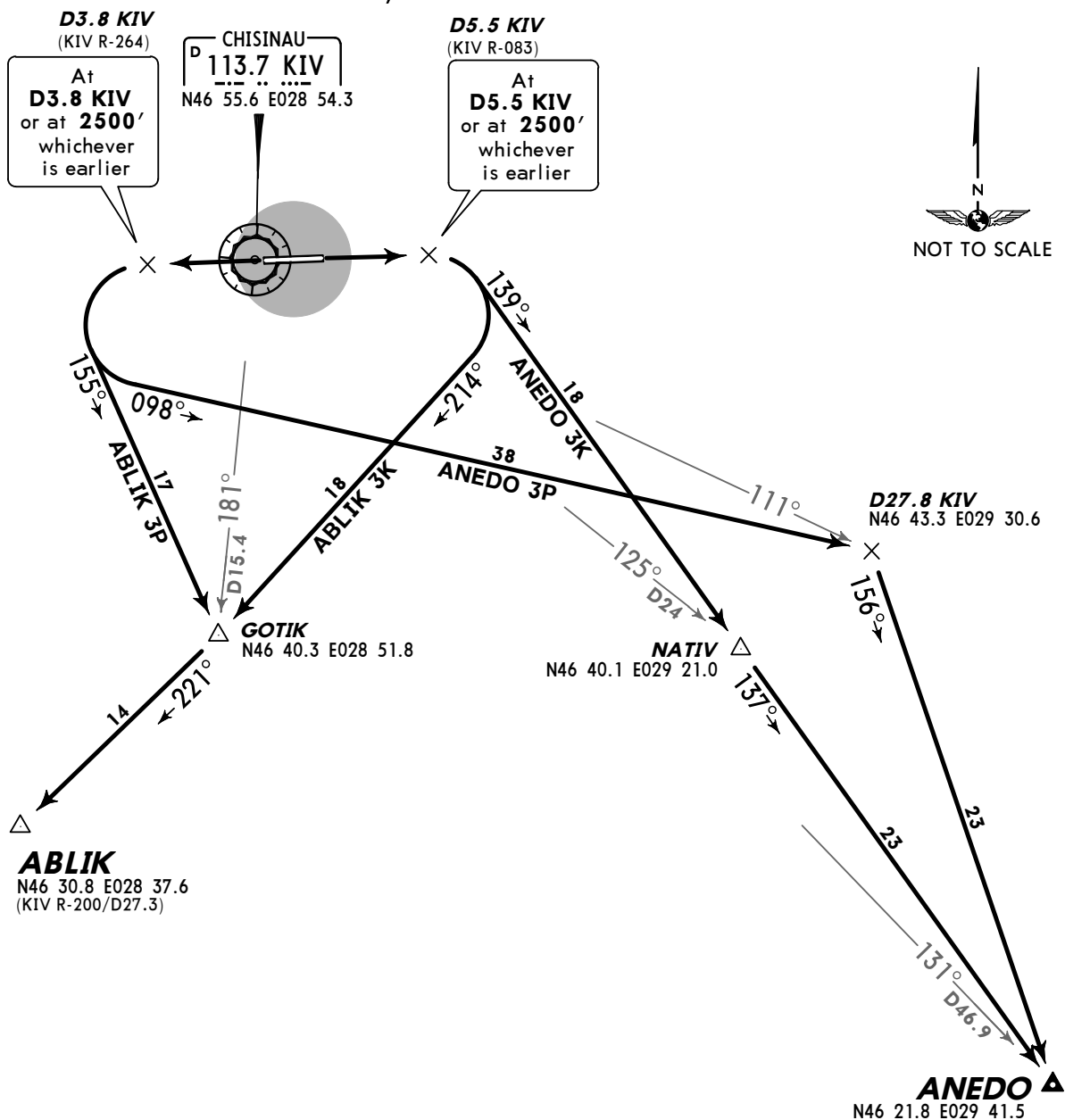
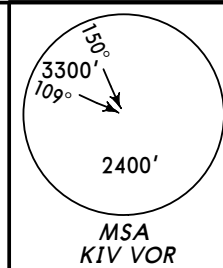


CHISINAU
Approach
133.3

Apt Elev
399'

Trans level: By ATC Trans alt: 4000'
1. Contact CHISINAU Approach immediately after take-off.
2. Initial turns are calculated with 240 KT and bank angle 20°.

ABLIK THREE KILO (ABLIK 3K) [ABLI3K]
ABLIK THREE PAPA (ABLIK 3P) [ABLI3P]
ANEDO THREE KILO (ANEDO 3K) [ANED3K]
ANEDO THREE PAPA (ANEDO 3P) [ANED3P]
RWYS 08, 26 DEPARTURES



ABLIK 3K, 3P: Initial climb clearance FL80
ANEDO 3K, 3P: Initial climb clearance FL90

SID	RWY	ROUTING
ABLIK 3K	08	Climb to D5.5 KIV or 2500', whichever is earlier, turn RIGHT, 214° track to GOTIK, turn RIGHT, 221° track to ABLIK.
ABLIK 3P	26	Climb to D3.8 KIV or 2500', whichever is earlier, turn LEFT, 155° track to GOTIK, turn RIGHT, 221° track to ABLIK.
ANEDO 3K	08	Climb to D5.5 KIV or 2500', whichever is earlier, turn RIGHT, 139° track to NATIV, turn LEFT, 137° track to ANEDO.
ANEDO 3P	26	Climb to D3.8 KIV or 2500', whichever is earlier, turn LEFT, 098° track to D27.8 KIV, turn RIGHT, 156° track to ANEDO.

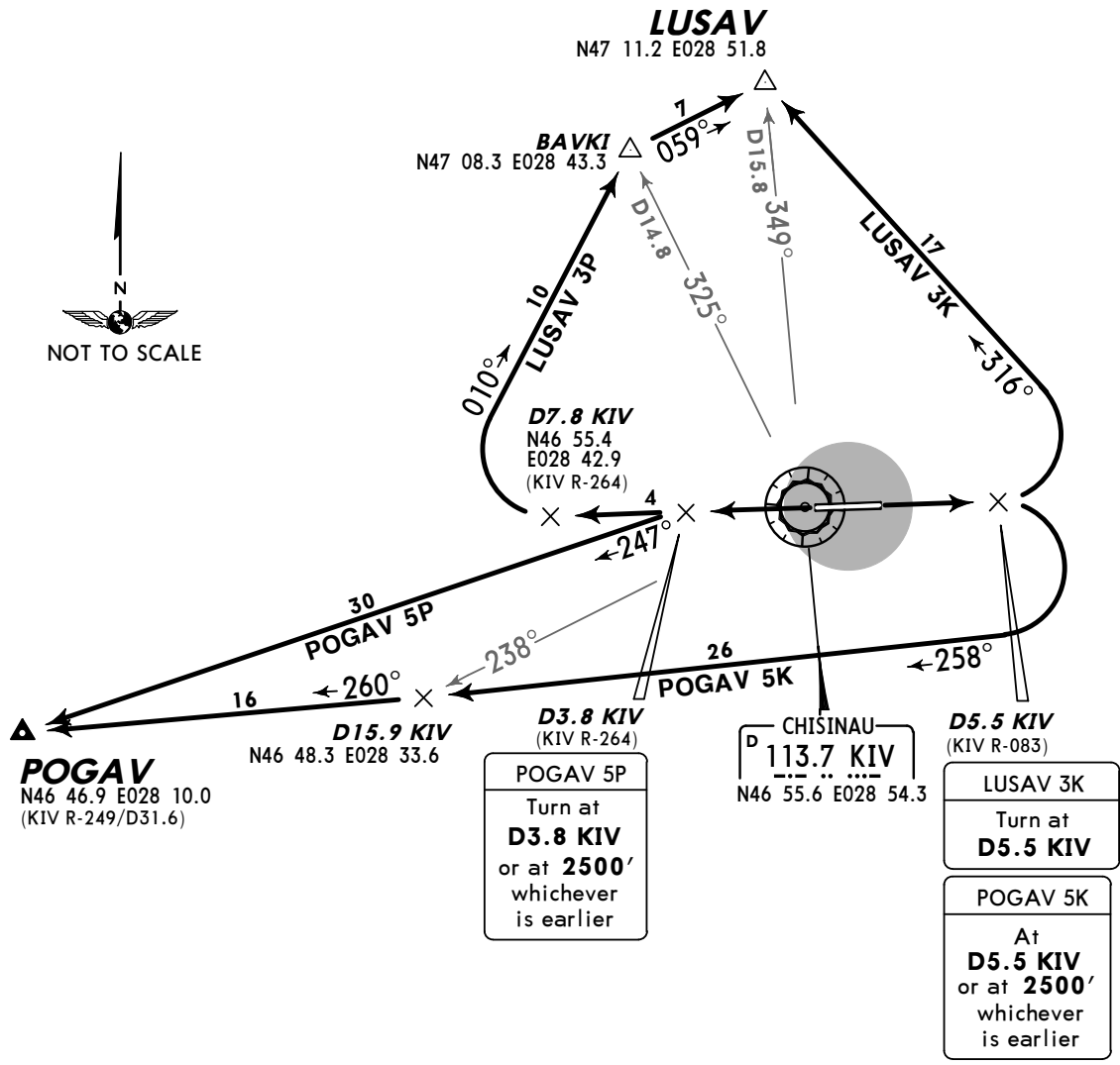
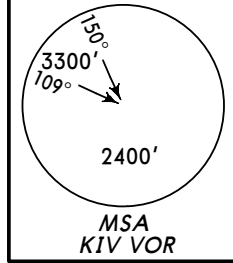
NOT FOR OPERATIONAL USE

CHISINAU
Approach
133.3

Apt Elev
399'

Trans level: By ATC Trans alt: 4000'
1. Contact CHISINAU Approach immediately after take-off.
2. Initial turns are calculated with 240 KT and bank angle 20°.

LUSAV THREE KILO (LUSAV 3K) [LUSA3K]
LUSAV THREE PAPA (LUSAV 3P) [LUSA3P]
POGAV FIVE KILO (POGAV 5K) [POGA5K]
POGAV FIVE PAPA (POGAV 5P) [POGA5P]
RWYS 08, 26 DEPARTURES



D3.8 KIV
(KIV R-264)
POGAV 5P
Turn at
D3.8 KIV
or at **2500'**
whichever
is earlier

D5.5 KIV
(KIV R-083)
LUSAV 3K
Turn at
D5.5 KIV

POGAV 5K
At
D5.5 KIV
or at **2500'**
whichever
is earlier

LUSAV 3K, POGAV 5K, 5P: Initial climb clearance **FL80**
LUSAV 3P: Initial climb clearance **FL70**

SID	RWY	ROUTING
LUSAV 3K	08	Climb to D5.5 KIV, turn LEFT, 316° track to LUSAV.
LUSAV 3P	26	Climb to D7.8 KIV, turn RIGHT, 010° track to BAVKI, turn RIGHT, 059° track to LUSAV.
POGAV 5K	08	Climb to D5.5 KIV or 2500' , whichever is earlier, turn RIGHT, 258° track to D15.9 KIV, turn RIGHT, 260° track to POGAV.
POGAV 5P	26	Climb to D3.8 KIV or 2500' , whichever is earlier, turn LEFT, 247° track to POGAV.

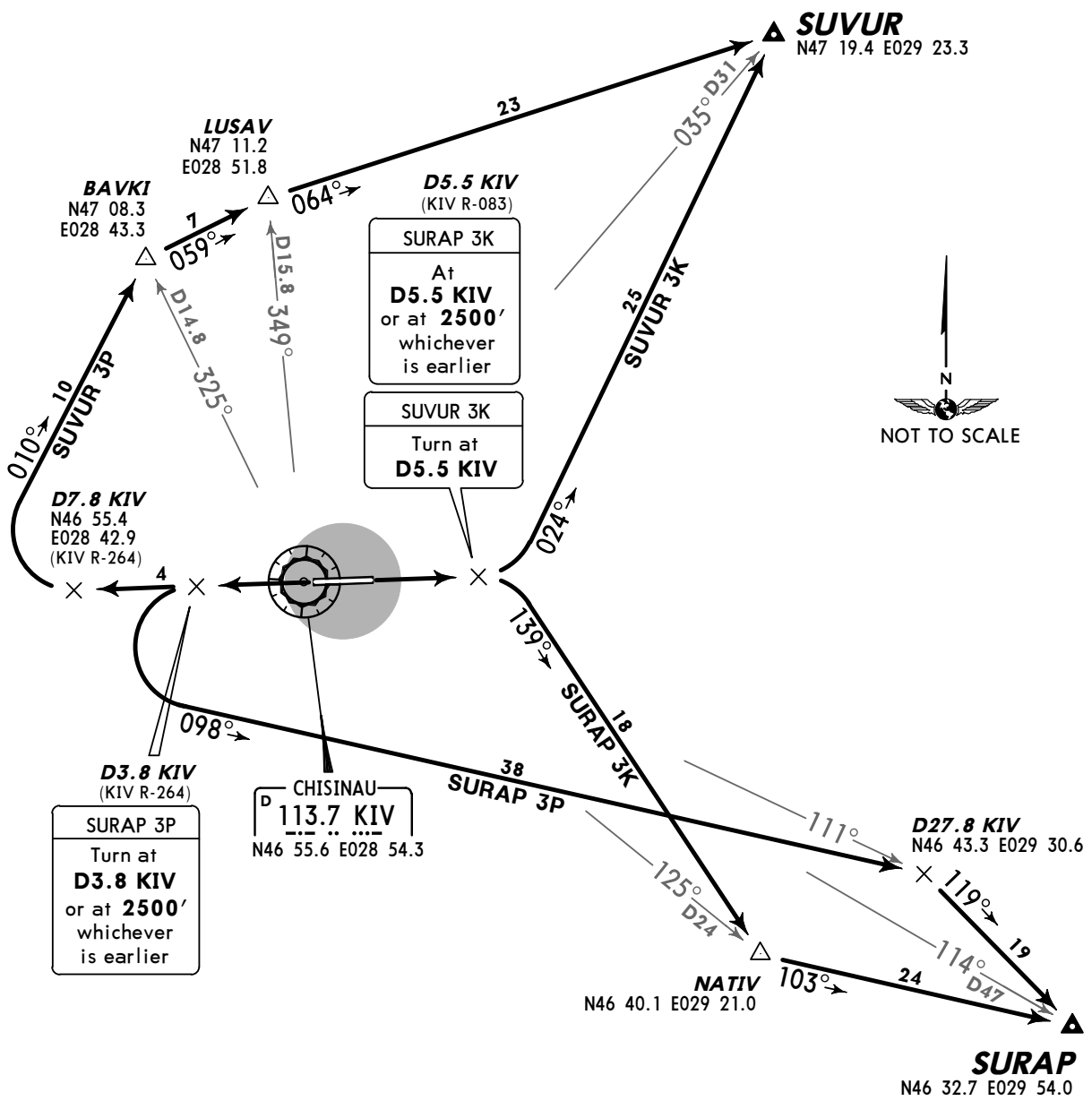
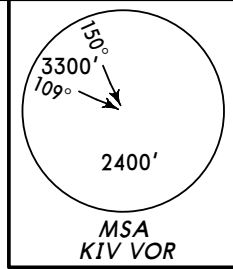
NOT FOR OPERATIONAL USE

CHISINAU
Approach
133.3

Apt Elev
399'

Trans level: By ATC Trans alt: 4000'
1. Contact CHISINAU Approach immediately after take-off.
2. Initial turns are calculated with 240 KT and bank angle 20°.

SURAP THREE KILO (SURAP 3K) [SURA3K]
SURAP THREE PAPA (SURAP 3P) [SURA3P]
SUVUR THREE KILO (SUVUR 3K) [SUVU3K]
SUVUR THREE PAPA (SUVUR 3P) [SUVU3P]
RWYS 08, 26 DEPARTURES



NOT FOR OPERATIONAL USE

Initial climb clearance **FL90**

SID	RWY	ROUTING
SURAP 3K	08	Climb to D5.5 KIV or 2500', whichever is earlier, turn RIGHT, 139° track to NATIV, turn LEFT, 103° track to SURAP.
SURAP 3P	26	Climb to D3.8 KIV or 2500', whichever is earlier, turn LEFT, 098° track to D27.8 KIV, turn RIGHT, 119° track to SURAP.
SUVUR 3K	08	Climb to D5.5 KIV, turn LEFT, 024° track to SUVUR.
SUVUR 3P	26	Climb to D7.8 KIV, turn RIGHT, 010° track to BAVKI, turn RIGHT, 059° track to LUSAV, turn RIGHT, 064° track to SUVUR.

CHANGES: New chart.

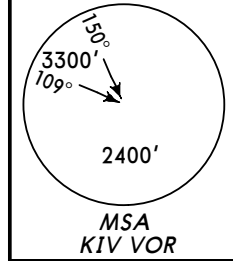
© JEPPESEN, 2009. ALL RIGHTS RESERVED.

CHISINAU
Approach
133.3

Apt Elev
399'

Trans level: By ATC Trans alt: 4000'
1. Contact CHISINAU Approach immediately after take-off.
2. Initial turns are calculated with 240 KT and bank angle 20°.

TURSA THREE KILO (TURSA 3K) [TURS3K]
TURSA THREE PAPA (TURSA 3P) [TURS3P]
TUVAP THREE KILO (TUVAP 3K) [TUVA3K]
TUVAP THREE PAPA (TUVAP 3P) [TUVA3P]
RWYS 08, 26 DEPARTURES



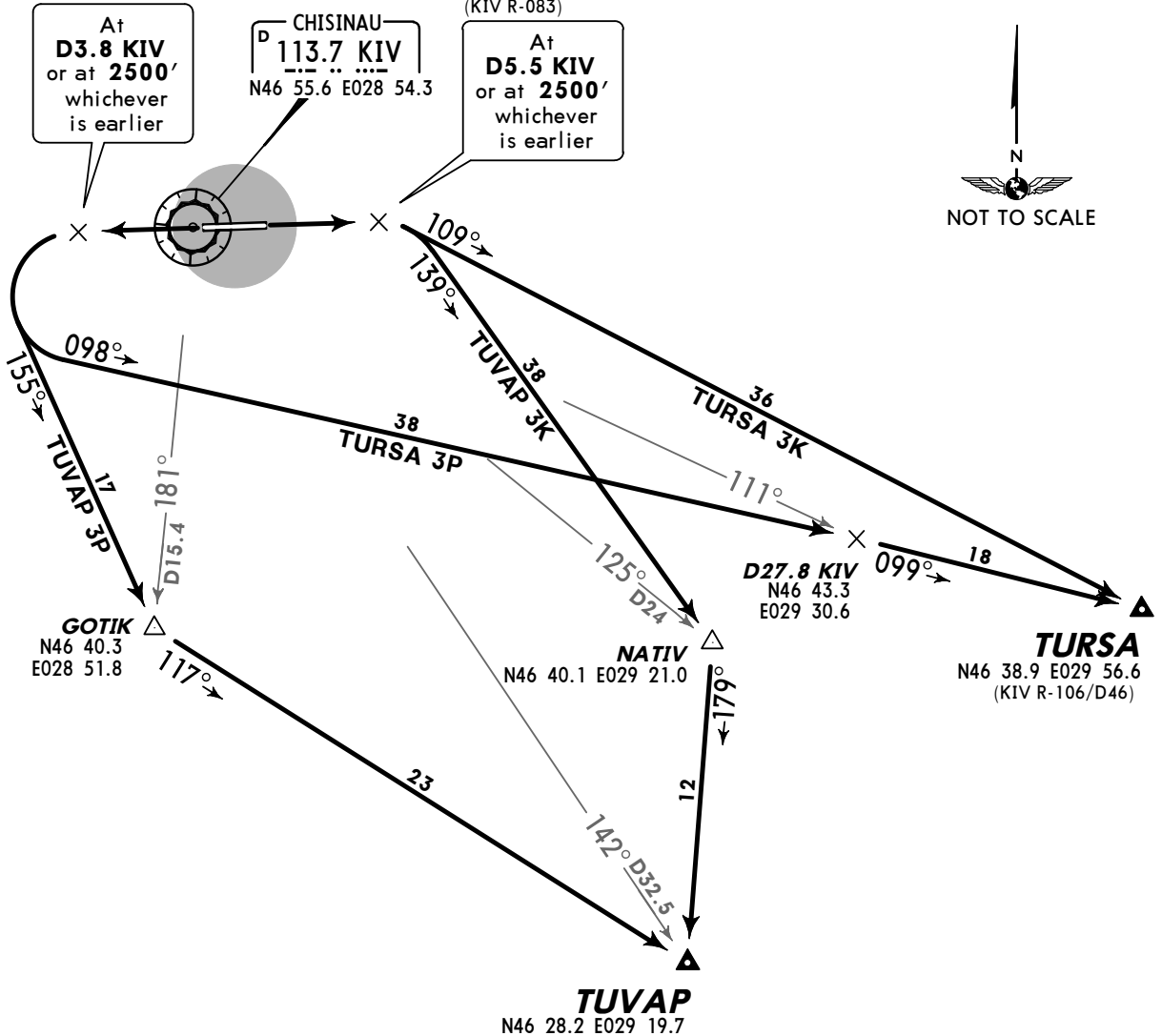
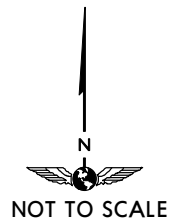
D3.8 KIV
(KIV R-264)

At
D3.8 KIV
or at 2500'
whichever
is earlier

CHISINAU
113.7 KIV
N46 55.6 E028 54.3

D5.5 KIV
(KIV R-083)

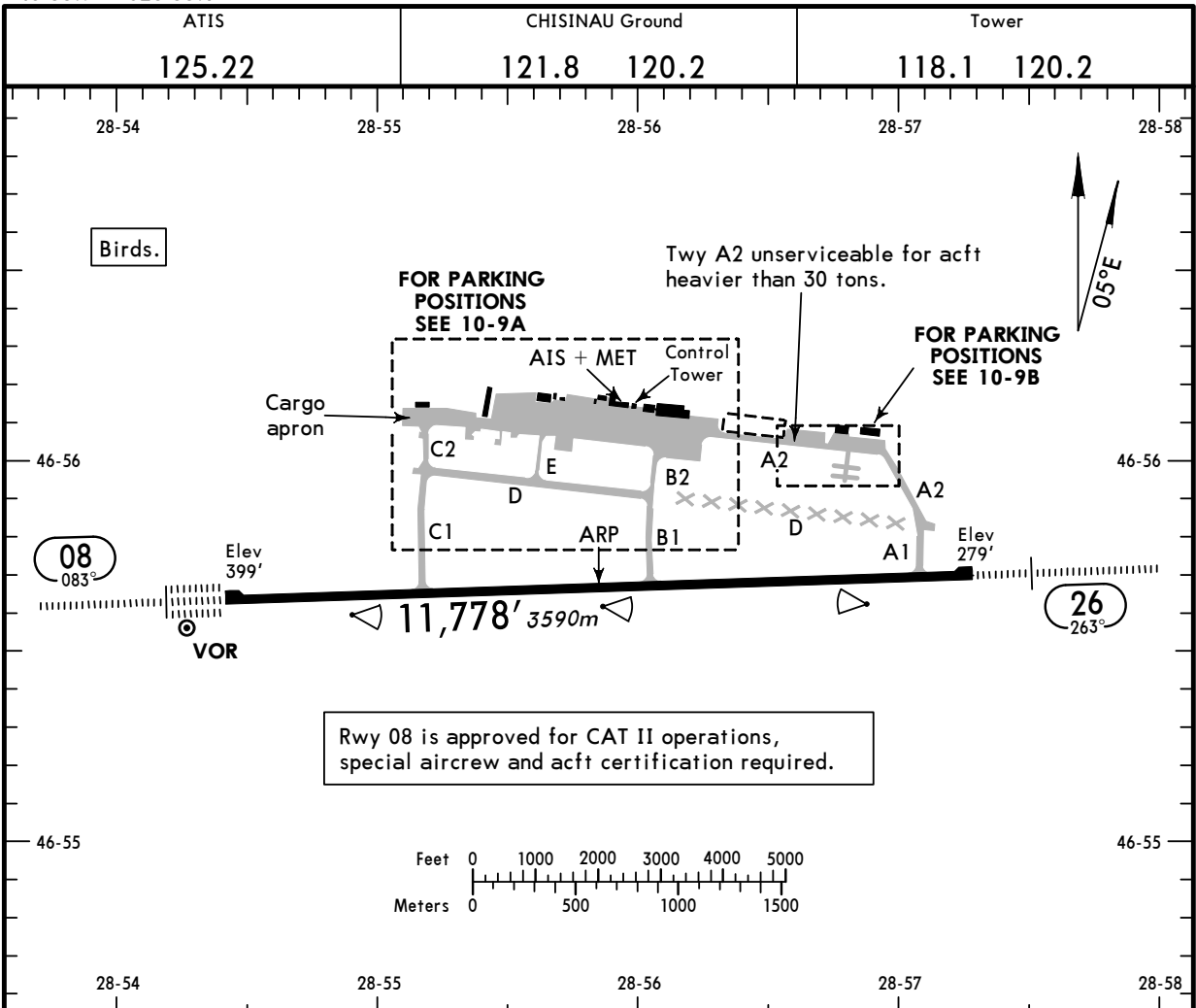
At
D5.5 KIV
or at 2500'
whichever
is earlier



TURSA 3K: Initial climb clearance **FL70**
TURSA 3P, TUVAP 3P: Initial climb clearance **FL90**
TUVAP 3K: Initial climb clearance **FL80**

SID	RWY	ROUTING
TURSA 3K	08	Climb to D5.5 KIV or 2500', whichever is earlier, turn RIGHT, 109° track to TURSA.
TURSA 3P	26	Climb to D3.8 KIV or 2500', whichever is earlier, turn LEFT, 098° track to D27.8 KIV, turn RIGHT, 099° track to TURSA.
TUVAP 3K	08	Climb to D5.5 KIV or 2500', whichever is earlier, turn RIGHT, 139° track to NATIV, turn RIGHT, 179° track to TUVAP.
TUVAP 3P	26	Climb to D3.8 KIV or 2500', whichever is earlier, turn LEFT, 155° track to GOTIK, turn LEFT, 117° track to TUVAP.

NOT FOR OPERATIONAL USE



Rwy 08 is approved for CAT II operations, special aircrew and acft certification required.

ADDITIONAL RUNWAY INFORMATION

RWY	HIRL (58m) CL (15m) HIALS-II TDZ PAPI-L(3.0°) RVR	USABLE LENGTHS		TAKE-OFF	WIDTH
		Threshold	Landing Beyond Glide Slope		
08	HIRL (58m) CL (15m) HIALS-II TDZ PAPI-L(3.0°) RVR		10,589' 3228m	1	148' 45m
26	HIRL (58m) CL (15m) HIALS PAPI-L(3.0°) RVR		10,958' 3340m		

1 TAKE OFF RUN AVAILABLE

RWY 08:

From rwy head 11,778' (3590m)
 twy C1 int 8612' (2625m)
 twy B1 int 5062' (1543m)

RWY 26:

From rwy head 11,778' (3590m)
 twy A1 int 10,929' (3331m)
 twy B1 int 6716' (2047m)

NOT FOR OPERATIONAL USE

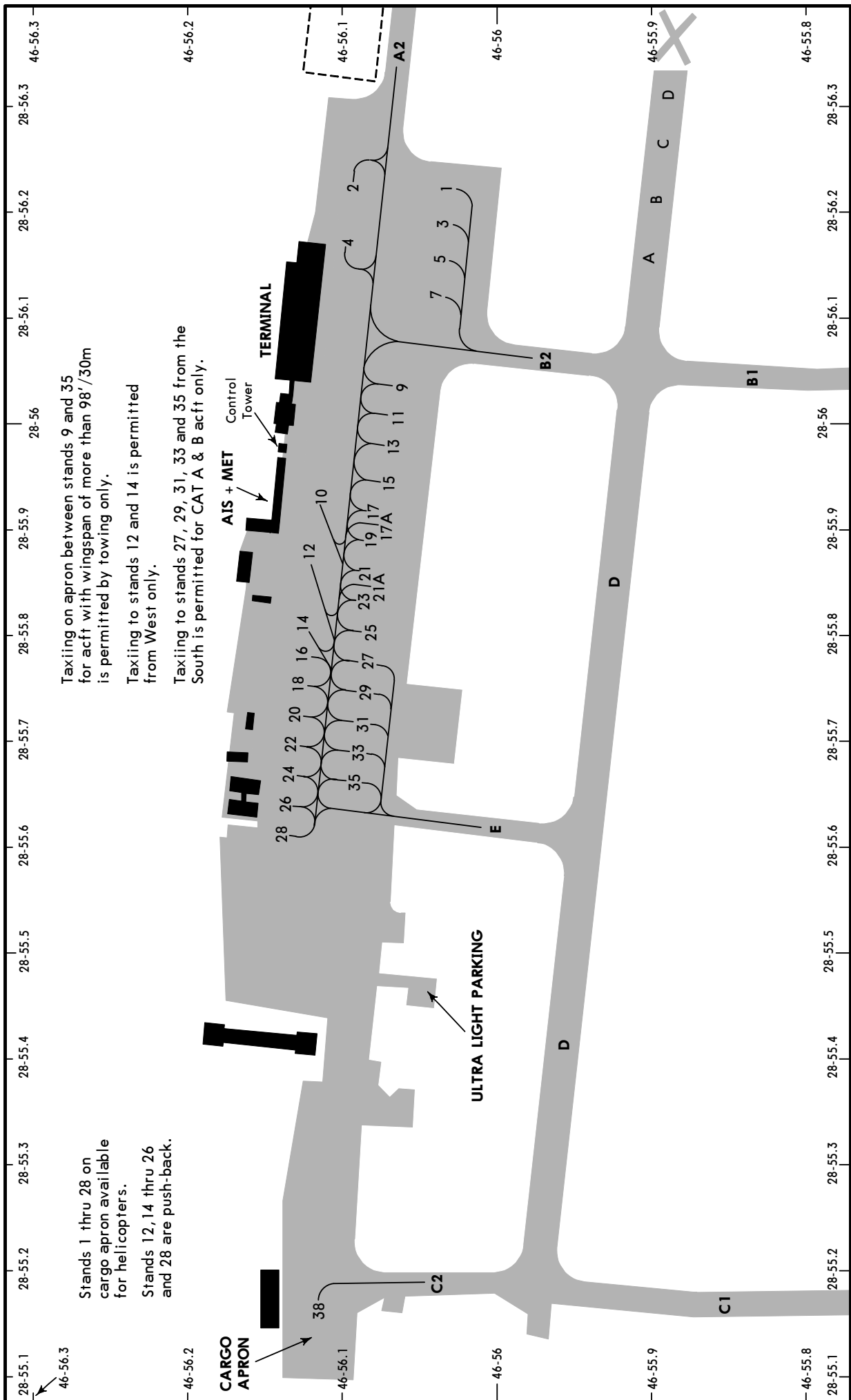
JAR-OPS

TAKE-OFF 1

All Rwys					
LVP must be in force					
Approved Operators	RL, CL & mult. RVR req	RL & CL	RCLM (DAY only) or RL	RCLM (DAY only) or RL	NIL (DAY only)
A	125m	150m	200m	250m	500m
B	125m	150m	200m	250m	
C	150m	200m	250m	300m	400m
D	150m	200m	250m	300m	400m

1 Operators applying U.S. Ops Specs: CL required below 300m; approved guidance system required below 150m.

NOT FOR OPERATIONAL USE



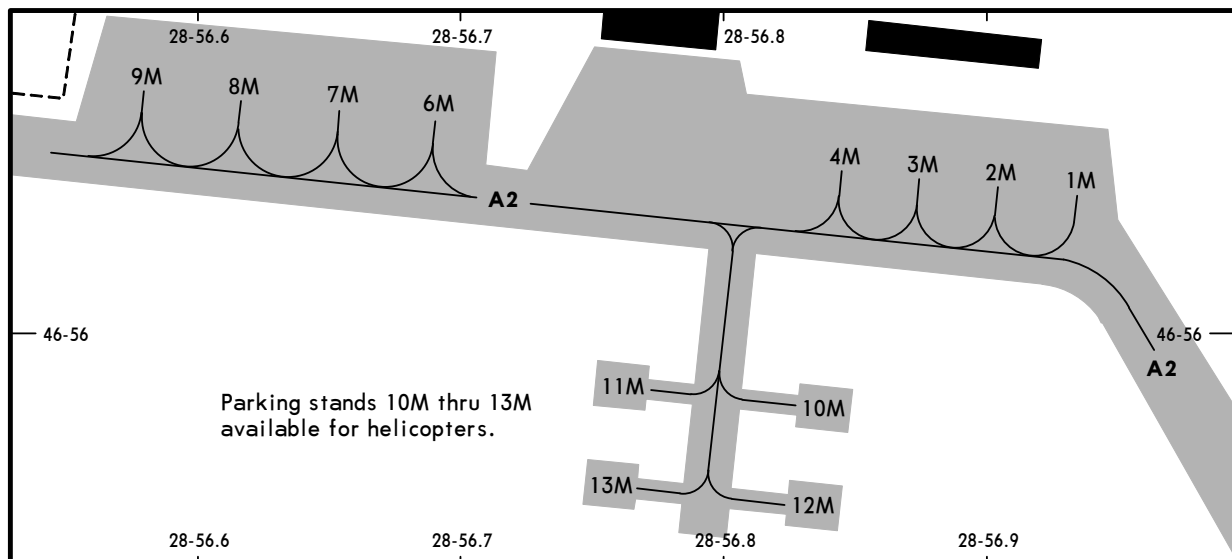
Taxiing on apron between stands 9 and 35 for acft with wingspan of more than 98'/30m is permitted by towing only.

Taxiing to stands 12 and 14 is permitted from West only.

Taxiing to stands 27, 29, 31, 33 and 35 from the South is permitted for CAT A & B acft only.

Stands 1 thru 28 on cargo apron available for helicopters.

Stands 12, 14 thru 26 and 28 are push-back.



INS COORDINATES

STAND No.	COORDINATES	STAND No.	COORDINATES
A, B	N46 55.9 E028 56.2	21A	N46 56.1 E028 55.8
C, D	N46 55.9 E028 56.3	22	N46 56.1 E028 55.7
1	N46 56.0 E028 56.2	23	N46 56.0 E028 55.9
2	N46 56.1 E028 56.2	24	N46 56.1 E028 55.7
3	N46 56.0 E028 56.2	25	N46 56.0 E028 55.8
4	N46 56.1 E028 56.2	26	N46 56.1 E028 55.7
5	N46 56.0 E028 56.2	27	N46 56.1 E028 55.8
7,9	N46 56.0 E028 56.1	28	N46 56.1 E028 55.6
10	N46 56.1 E028 56.0	29	N46 56.1 E028 55.8
11	N46 56.0 E028 56.0	31, 33, 35	N46 56.1 E028 55.7
12	N46 56.1 E028 55.9	38	N46 56.1 E028 55.2
13	N46 56.0 E028 56.0	1M thru 3M	N46 56.0 E028 56.9
14	N46 56.1 E028 55.9	4M	N46 56.0 E028 56.8
15	N46 56.0 E028 56.0	6M, 7M	N46 56.1 E028 56.7
16	N46 56.1 E028 55.8	8M, 9M	N46 56.1 E028 56.6
17, 17A	N46 56.0 E028 55.9	10M thru 13M	N46 56.0 E028 56.8
18	N46 56.1 E028 55.8		
19	N46 56.0 E028 55.9		
20	N46 56.1 E028 55.8		
21	N46 56.0 E028 55.9		

LOW VISIBILITY PROCEDURES (LVP)

GENERAL

LVP will be commenced when RVR falls to 550m and less, or ceiling is at or below 200'.
 ATC will inform pilots when LVP are in force.
 "FOLLOW ME" mandatory when LVP are in force.

APPROACH

After each landing, pilot shall report ILS sensitive area vacated.

Landing rwy 08:

Acft must vacate rwy only via twy B1, then via twy B2 to the parking position.

DEPARTURE

Departing acft is restricted to one movement at a time.

Departure rwy 08:

Acft with wingspan more than 98'/30m from parking position via twy B2, twy D and twy C1.
 Acft with wing span less than 98'/30m from parking position via twy E, twy D and twy C1.

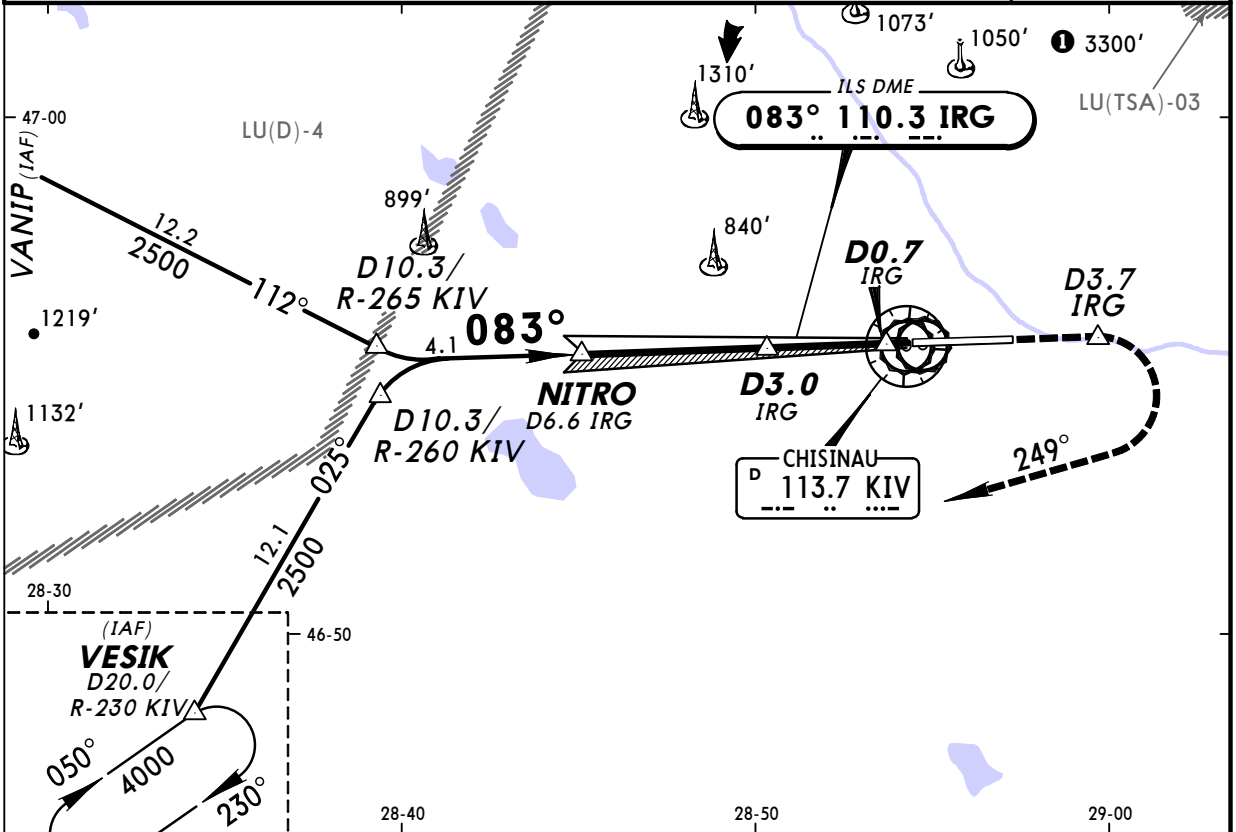
Departure rwy 26:

For all acft types from parking position via Twys B2 and B1.

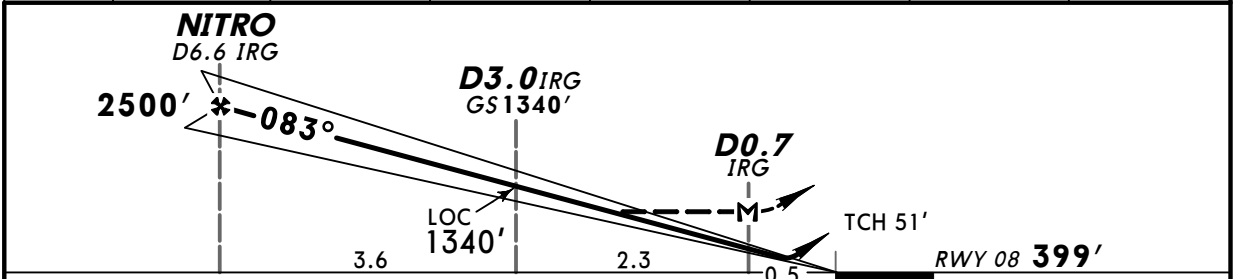
NOT FOR OPERATIONAL USE

BRIEFING STRIP™

ATIS 125.22		CHISINAU Approach 133.3 120.2		CHISINAU Tower/Radar 118.1 120.2		Ground 121.8 120.2	
LOC IRG 110.3	Final Apch Crs 083°	GS D3.0 IRG 1340' (941')	ILS DA(H) Refer to Minimums	Apt Elev 399'	RWY 399'		
MISSED APCH: Climb STRAIGHT AHEAD to D3.7 IRG, then turn RIGHT to VESIK climbing to 4000'.							
Alt Set: hPa DME required.		Rwy Elev: 15 hPa	Trans level: By ATC		Trans alt: 4000'		MSA KIV VOR



LOC (GS out)	IRG DME	6.0	5.0	4.0	3.0	2.0	1.0
	ALTITUDE	2280'	1970'	1650'	1340'	1020'	700'



Gnd speed-Kts	70	90	100	120	140	160	HIALS-II PAPI	D3.7 IRG	4000' RT	VESIK
ILS GS 3.00° or LOC Desc grad 5.2%	377	484	538	646	753	861				
MAP at D0.7 IRG										

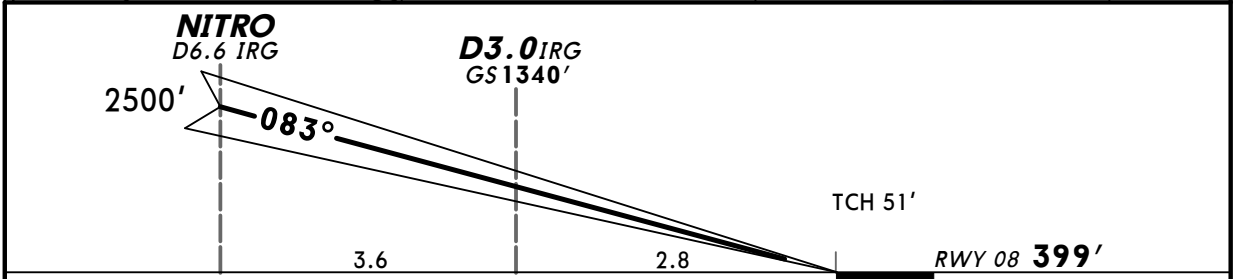
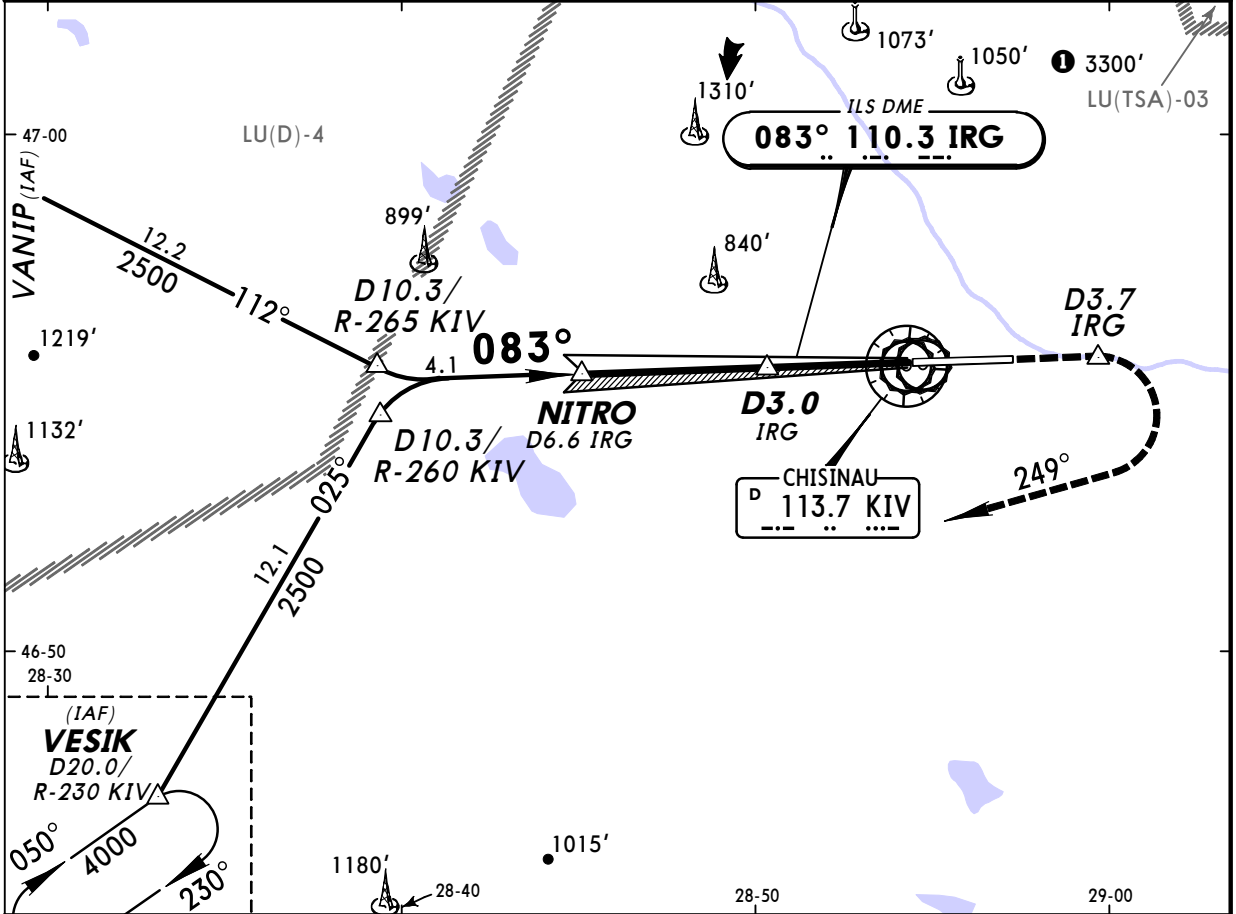
JAR-OPS STRAIGHT-IN LANDING RWY 08										
ILS DA(H) C: 606' (207') AB: 599' (200') D: 616' (217')					LOC (GS out) MDA(H) 860' (461')					
FULL			ALS out			ALS out				
A	RVR 550m		RVR 1000m			RVR 1000m		RVR 1500m		
B	RVR 550m					RVR 1200m		RVR 2000m		
C	RVR 600m					RVR 1600m				
D	RVR 600m									

NOT FOR OPERATIONAL USE

PANS OPS

BRIEFING STRIP™

ATIS 125.22		CHISINAU Approach 133.3 120.2		CHISINAU Tower/Radar 118.1 120.2		Ground 121.8 120.2	
LOC IRG 110.3	Final Apch Crs 083°	GS D3.0 IRG 1340' (941')	CAT II ILS RA/DA(H) Refer to Minimums		Apt Elev 399'	RWY 399'	
MISSED APCH: Climb STRAIGHT AHEAD to D3.7 IRG, then turn RIGHT to VESIK climbing to 4000'.							<p>2400' MSA KIV VOR</p>
Alt Set: hPa		Rwy Elev: 15 hPa		Trans level: By ATC		Trans alt: 4000'	
1. DME required. 2. Special aircrew and acft certification required.							



Gnd speed-Kts	70	90	100	120	140	160		D3.7 IRG ↑	4000' RT	VESIK
GS	3.00°	377	484	538	646	753				

JAR-OPS STRAIGHT-IN LANDING RWY 08 CAT II ILS			
A RA 103' DA(H) 499' (100')	B RA 119' DA(H) 514' (115')	C RA 134' DA(H) 527' (128')	D RA 148' DA(H) 540' (141')
RVR 300m		RVR 400m	RVR 450m

Operators applying U.S. Ops Specs: Autoland or HGS required below 350m.

NOT FOR OPERATIONAL USE

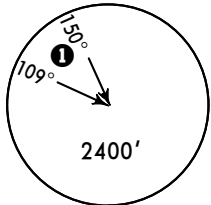
PANS OPS

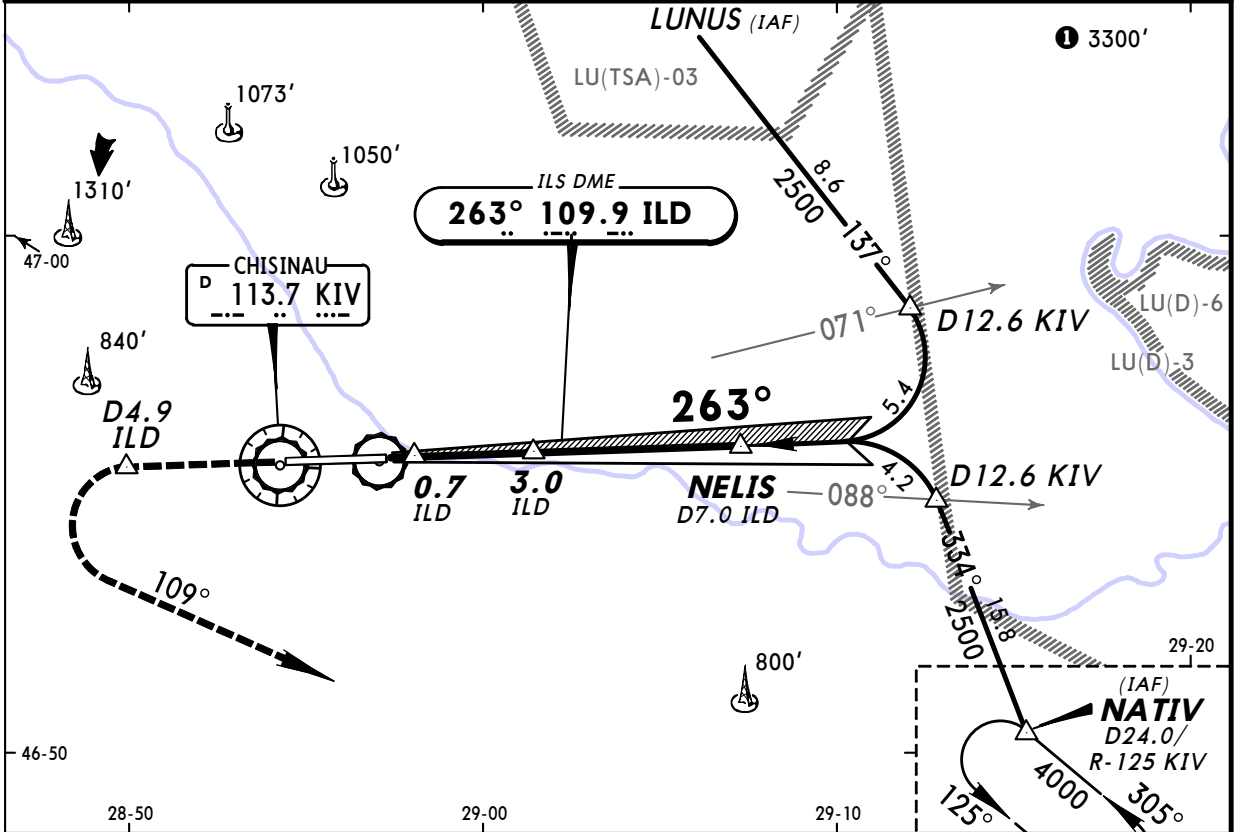
LUKK/KIV CHISINAU INTL

31 JUL 09 **JEPPESEN** (11-2)

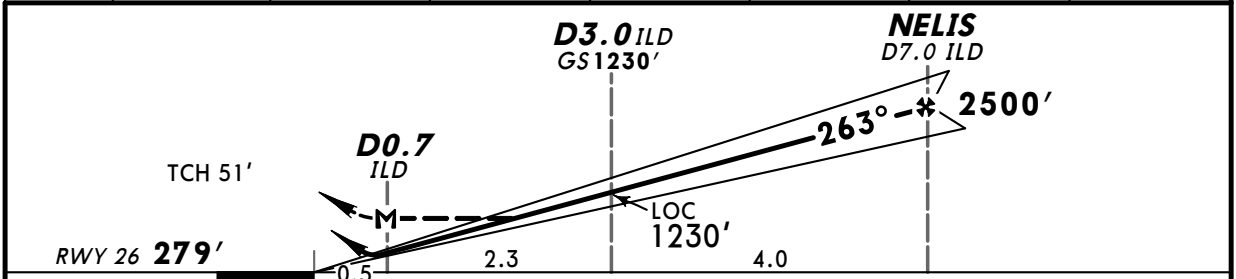
CHISINAU, MOLDOVA ILS or LOC Rwy 26

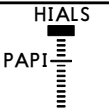



BRIEFING STRIP™

ATIS 125.22		CHISINAU Approach 133.3 120.2		CHISINAU Tower/Radar 118.1 120.2		Ground 121.8 120.2	
LOC ILD 109.9	Final Apch Crs 263°	GS D3.0 ILD 1230' (951')	ILS DA(H) Refer to Minimums	Apt Elev 399'	RWY 279'		
MISSED APCH: Climb STRAIGHT AHEAD to D4.9 ILD, then turn LEFT to NATIV climbing to 4000'.							MSA KIV VOR
Alt Set: hPa		Rwy Elev: 10 hPa		Trans level: By ATC		Trans alt: 4000'	
DME required.							



LOC (GS out)	ILD DME	1.0	2.0	3.0	4.0	5.0	6.0
	ALTITUDE	600'	910'	1230'	1540'	1860'	2180'



Gnd speed-Kts	70	90	100	120	140	160	HIALS 	D4.9 ILD 	4000' 	NATIV 
ILS GS 3.00° or LOC Desc grad 5.2%	377	484	538	646	753	861				
MAP at D0.7 ILD										

JAR-OPS STRAIGHT-IN LANDING RWY 26										
ILS DA(H) A: 479' (200') C: 490' (211') B: 480' (201') D: 500' (221')					LOC (GS out) MDA(H) 820' (541')					
FULL		ALS out			ALS out					
A	RVR 550m	RVR 1000m			RVR 1000m		RVR 1500m			
B	RVR 600m				RVR 1200m		RVR 2000m			
C					RVR 1600m					
D										

NOT FOR OPERATIONAL USE

PANS OPS

CHANGES: Communications.

© JEPPESEN, 2005, 2009. ALL RIGHTS RESERVED.