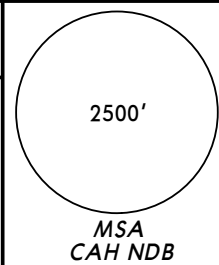


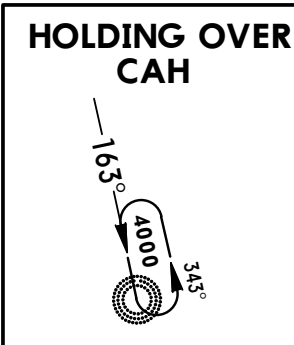
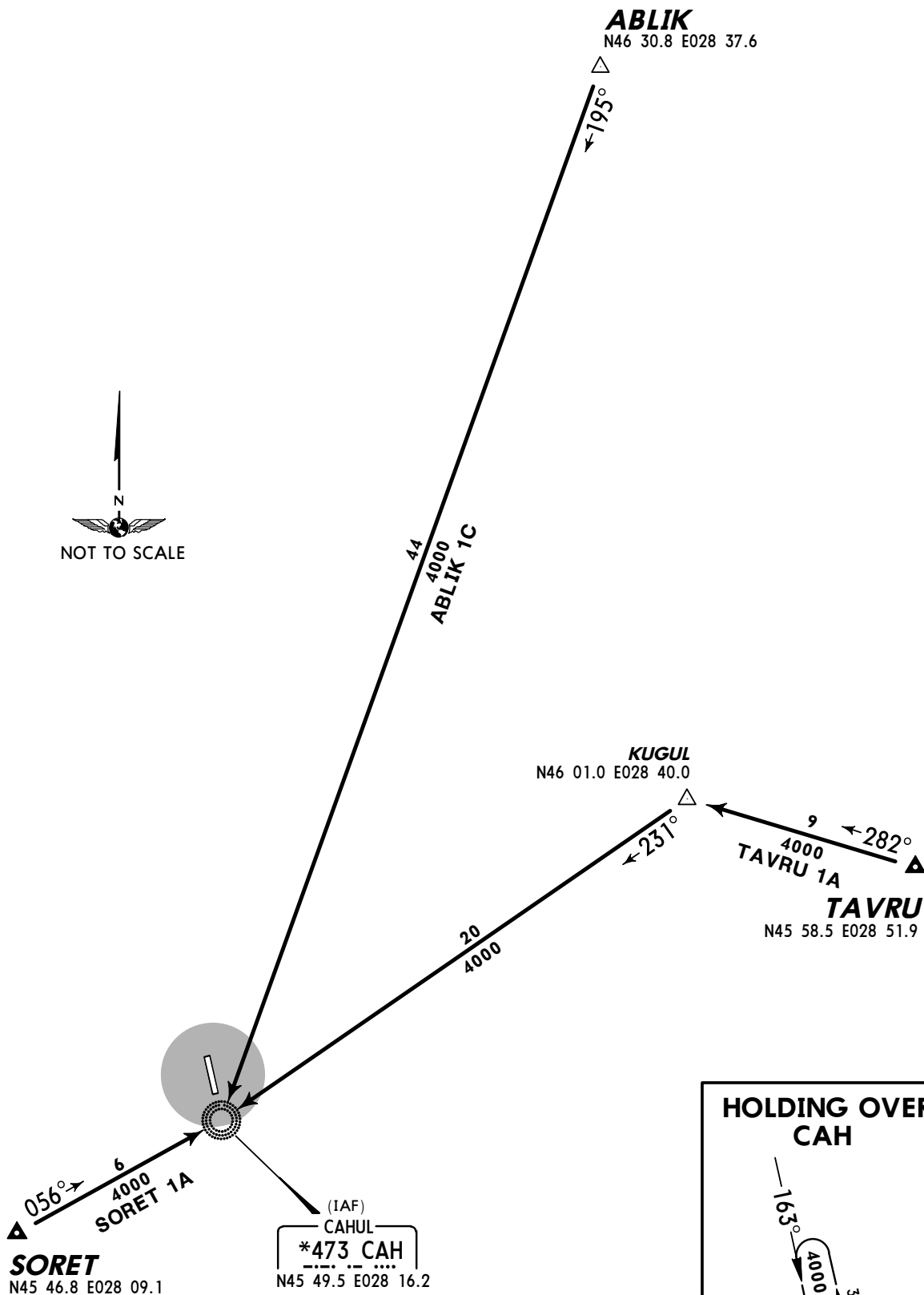
Apt Elev 652'
Alt Set: hPa
Trans level: By ATC Trans alt: 4000'



ABLIK ONE CHARLIE (ABLIK 1C) [ABLI1C]
SORET ONE ALPHA (SORET 1A) [SORE1A]
TAVRU ONE ALPHA (TAVRU 1A) [TAVR1A]
RWY 34 ARRIVALS



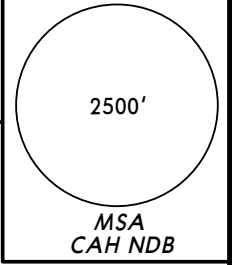
NOT FOR OPERATIONAL USE



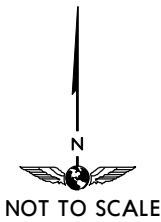
*CAHUL Tower
128.8

Apt Elev
652'

Trans level: By ATC Trans alt: 4000'
1. Contact CAHUL Tower immediately after take-off.
2. Turns are calculated with 280 KT and bank angle 20°.



**ABLIK ONE MIKE (ABLIK 1M) [ABLI1M]
SORET ONE KILO (SORET 1K) [SORE1K]
TAVRU ONE KILO (TAVRU 1K) [TAVR1K]
RWY 16 DEPARTURES**



ABLIK
N46 30.8 E028 37.6

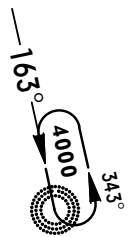
KUGUL
N46 01.0 E028 40.0

TAVRU
N45 58.5 E028 51.9

CAHUL
*473 CAH
N45 49.5 E028 16.2

SORET
N45 46.8
E028 09.1

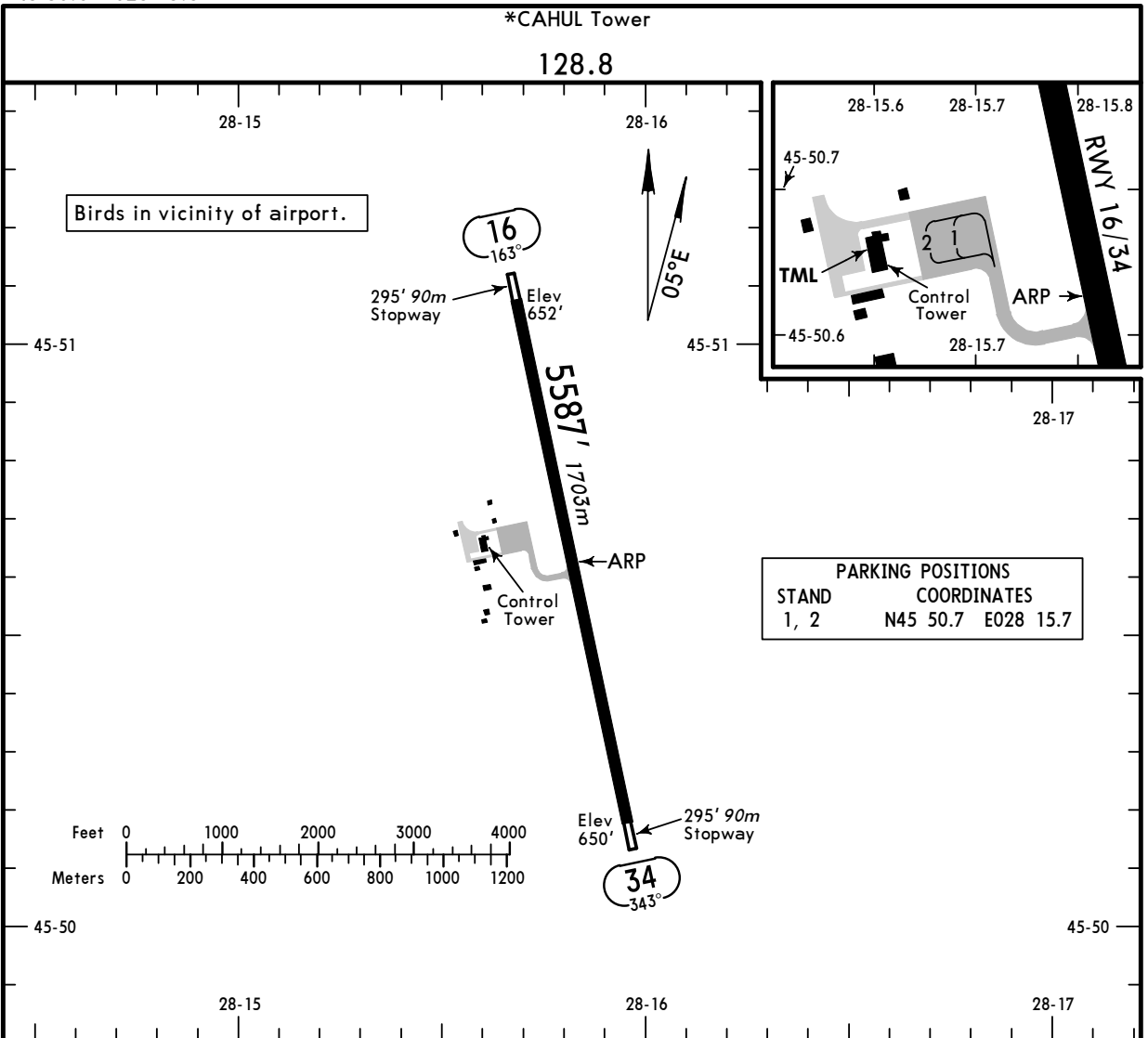
**HOLDING OVER
CAH**



**ABLIK 1M: Initial climb clearance FL90
SORET 1K: Initial climb clearance FL80
TAVRU 1K: Initial climb clearance FL150**

NOT FOR OPERATIONAL USE

SID	ROUTING
ABLIK 1M	Climb to 1500' , turn LEFT, 009° track to ABLIK.
SORET 1K	Climb to 1500' , turn LEFT to CAH, turn LEFT, intercept 236° bearing to SORET.
TAVRU 1K	Climb to 1500' , turn LEFT, 035° track to KUGUL, turn RIGHT, 102° track to TAVRU.



ADDITIONAL RUNWAY INFORMATION

RWY	USABLE LENGTHS	LANDING BEYOND		TAKE-OFF	WIDTH
		Threshold	Glide Slope		
16 34					115' 35m

JAR-OPS TAKE-OFF I		
All Rwys		
LVP must be in force		
RCLM (DAY only) or RL	RCLM (DAY only) or RL	NIL (DAY only)
A 250m	B 400m	C 500m
D NOT AUTHORIZED		

I Operators applying U.S. Ops Specs: CL required below 300m.

NOT FOR OPERATIONAL USE

