

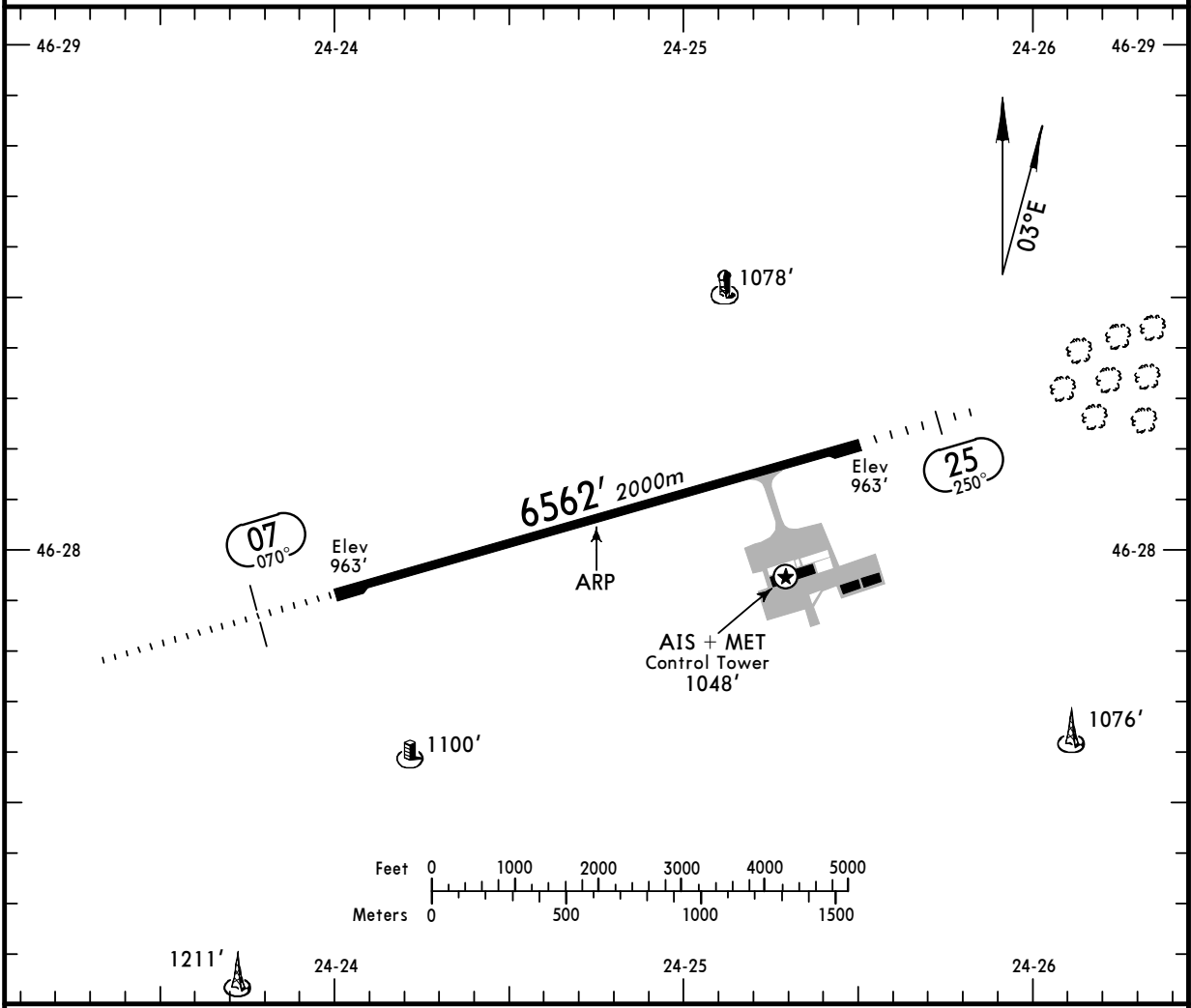
LRTM/TGM
 Apt Elev **963'**
 N46 28.1 E024 24.8

JEPPESEN TARGU MURES, ROMANIA
 30 MAY 08 (10-9)
 Eff 5 Jun

TRANSILVANIA-TARGU MURES

*TARGU MURES Tower

125.9



ADDITIONAL RUNWAY INFORMATION

RWY		USABLE LENGTHS			WIDTH
		Threshold	Landing Beyond Glide Slope	TAKE-OFF	
07	RL (60m) ALS PAPI (angle 3.2°)		5651' 1722m		98'
25	RL (60m) ALS				30m

JAR-OPS

TAKE-OFF **1**

	All Rwy's		
	LVP must be in Force		
	RCLM (DAY only) or RL	RCLM (DAY only) or RL	NIL (DAY only)
A			
B	250m	400m	500m
C			
D	300m		

1 Operators applying U.S. Ops Specs: CL required below 300m.

CHANGES: Lights.

© JEPPESEN, 1999, 2008. ALL RIGHTS RESERVED.

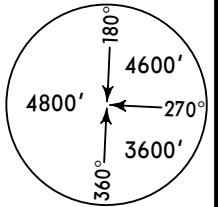
NOT FOR OPERATIONAL USE

*TARGU MURES Tower (TWR/APP)

125.9

BRIEFING STRIP™

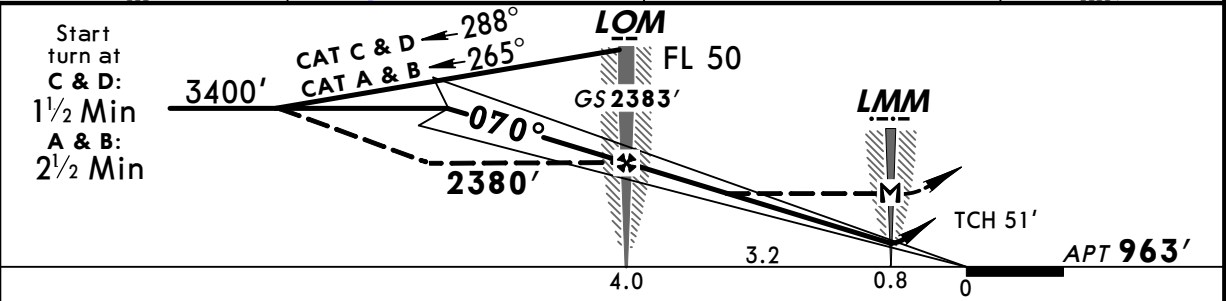
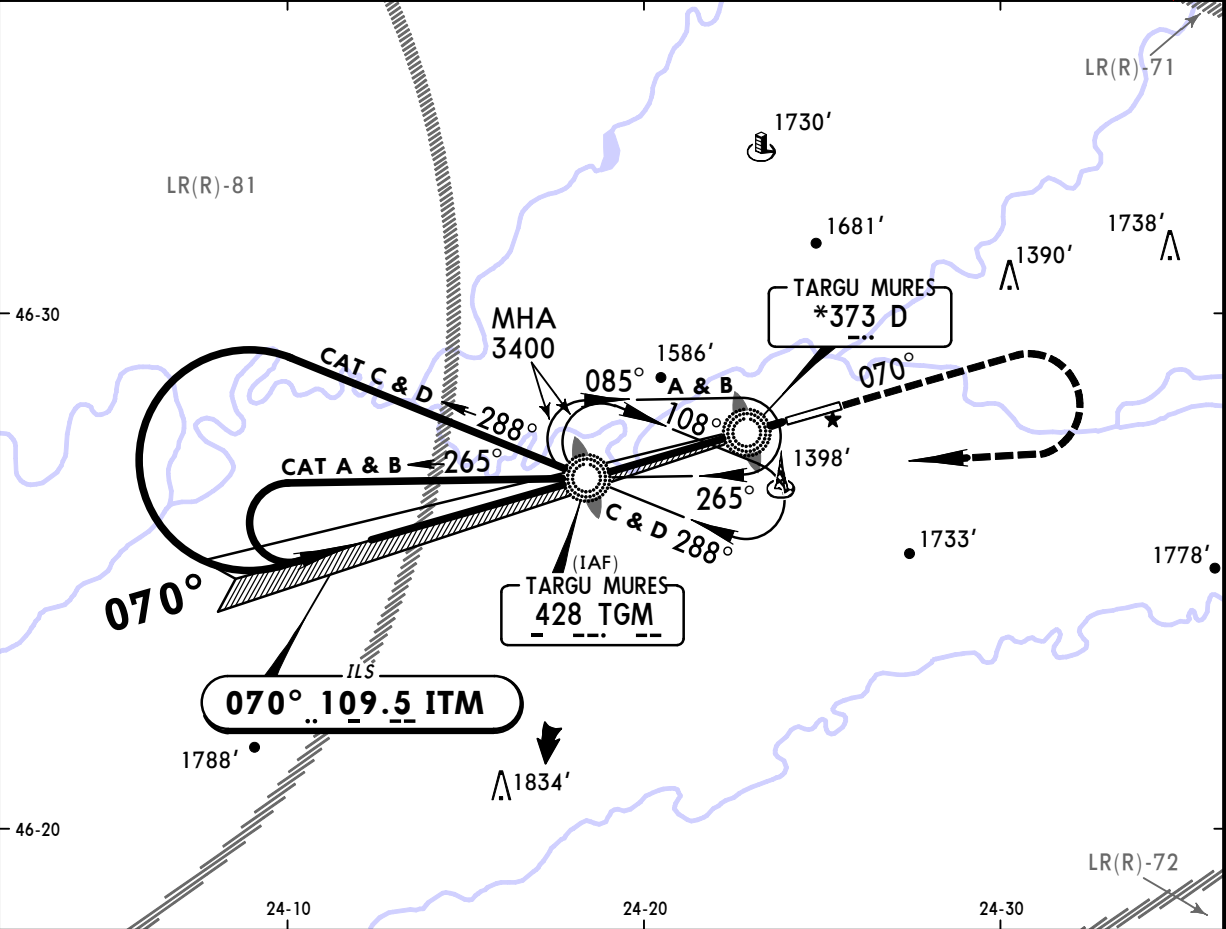
LOC ITM 109.5	Final Apch Crs 070°	GS LOM 2383' (1420')	ILS DA(H) 1163' (200')	Apt Elev 963'
----------------------------	----------------------------------	-----------------------------------	-------------------------------------	----------------------



MISSED APCH: Climb STRAIGHT AHEAD to 3400', then turn RIGHT to TGM NDB.

Alt Set: hPa (MM on req) Apt Elev: 35 hPa Trans level: By ATC Trans alt: 4000'

MSA TGM NDB



Gnd speed-Kts	70	90	100	120	140	160	PAPI ALS 3400'
ILS GS or LOC Desc angle 3.20°	402	517	574	689	804	919	
MAP at LMM							

JAR-OPS				STRAIGHT-IN LANDING RWY 07		CIRCLE-TO-LAND		
ILS		LOC (GS out)						
DA(H) 1163' (200')		MDA(H) 1340' (377')						
FULL		ALS out		LMM out		ALS out		
A	RVR 800m		RVR 1000m		NOT AUTH		RVR 1500m	
B	RVR 800m		RVR 1000m		NOT AUTH		RVR 1800m	
C	RVR 800m		RVR 1000m		NOT AUTH		RVR 2000m	
D	RVR 800m		RVR 1000m		NOT AUTH		RVR 2000m	
			RVR 1300m			Max Kts	MDA(H)	VIS
			RVR 1400m			100	1880' (917')	1500m
			RVR 1600m			135	1970' (1007')	1600m
			RVR 1800m			180	2210' (1247')	2400m
			RVR 1800m			205	2230' (1267')	3600m

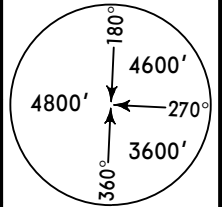
NOT FOR OPERATIONAL USE

PANS OPS 4

*TARGU MURES Tower (TWR/APP)

125.9

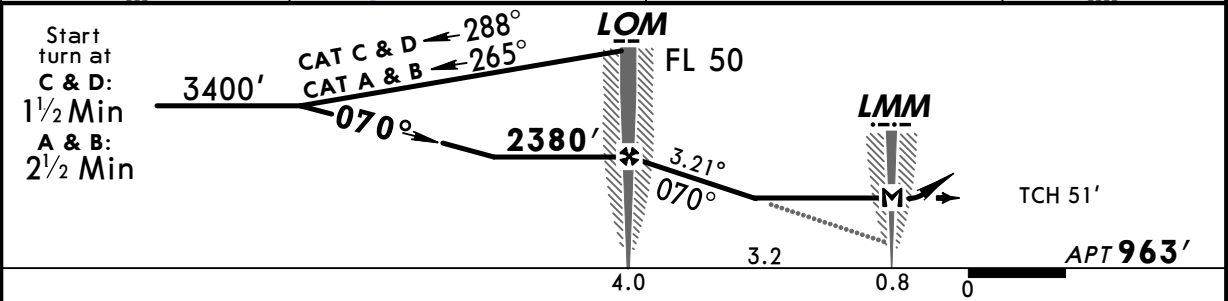
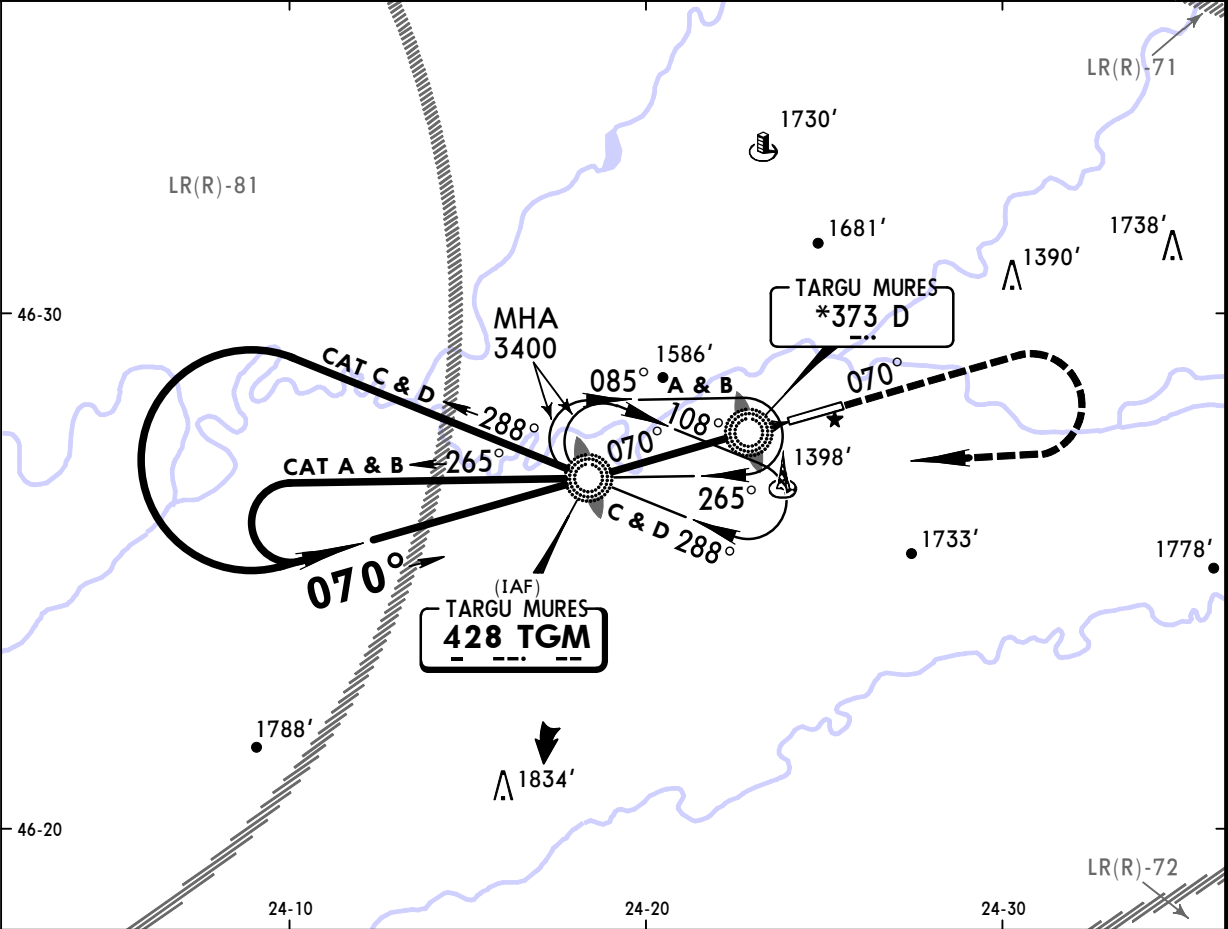
NDB TGM 428	Final Apch Crs 070°	Minimum Alt LOM 2380' (1417')	MDA(H) 1630' (667')	Apt Elev 963'
--------------------------	----------------------------------	--	-------------------------------	----------------------



MISSED APCH: Climb STRAIGHT AHEAD to 3400', then turn RIGHT to TGM NDB.

Alt Set: hPa (MM on req) Apt Elev: 35 hPa Trans level: By ATC Trans alt: 4000' **MSA TGM NDB**

BRIEFING STRIP™



Gnd speed-Kts	70	90	100	120	140	160	PAPI ALS 3400'
Descent angle 3.21°	398	511	568	682	795	909	
LOM to MAP 3.2	2:45	2:08	1:55	1:36	1:22	1:12	
or MAP at LMM							

JAR-OPS		STRAIGHT-IN LANDING RWY 07		CIRCLE-TO-LAND	
		MDA(H) 1630' (667')			
		ALS out		Max Kts	
A				100	MDA(H) 1880' (917') VIS 1500m
B	RVR 1500m			135	1970' (1007') 1600m
C				180	2210' (1247') 2400m
D	RVR 2000m			205	2230' (1267') 3600m

NOT FOR OPERATIONAL USE

PANS OPS 4