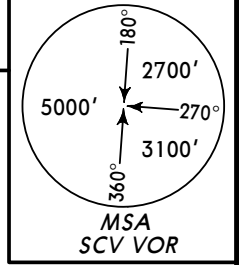
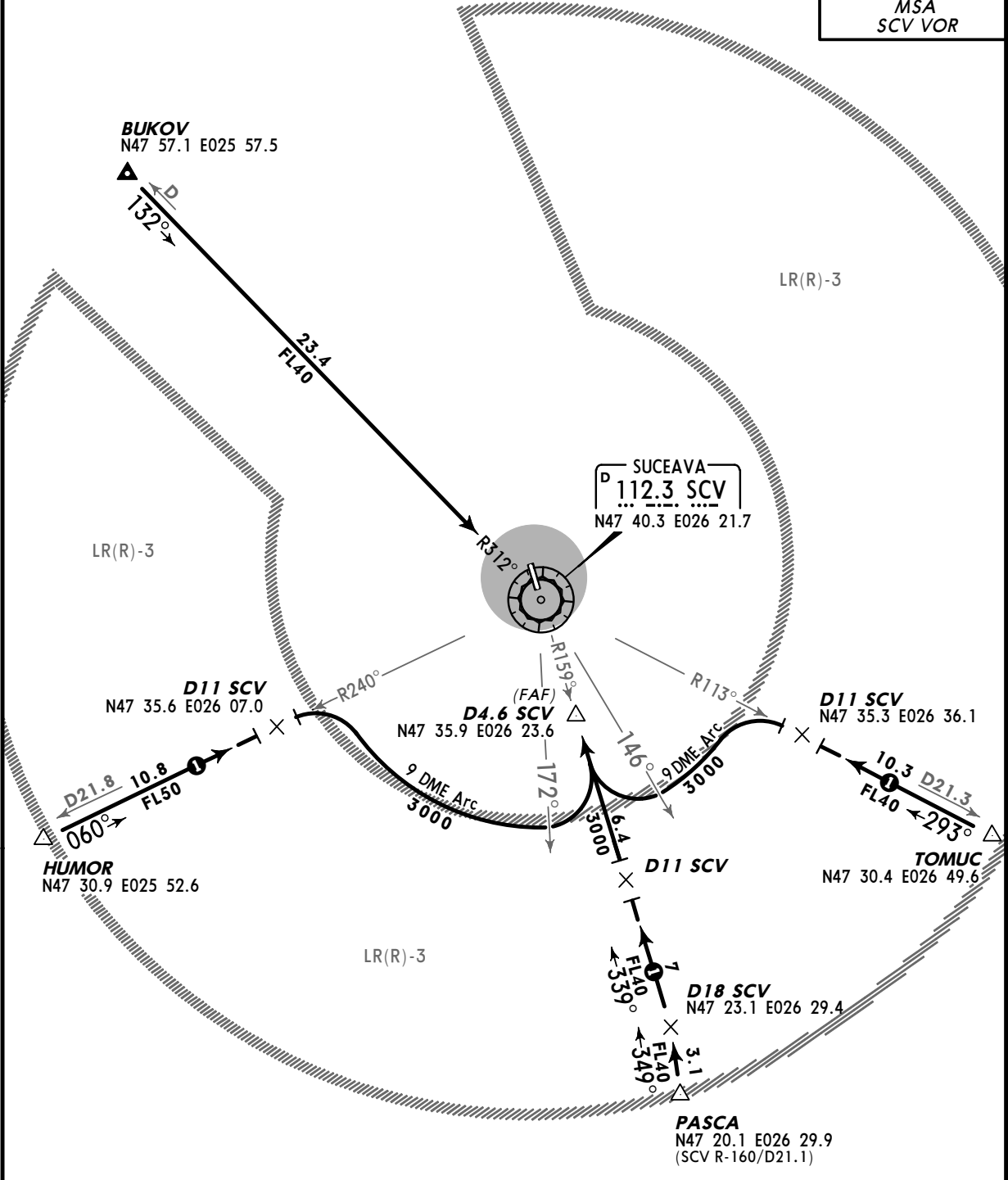


Apt Elev
1375'

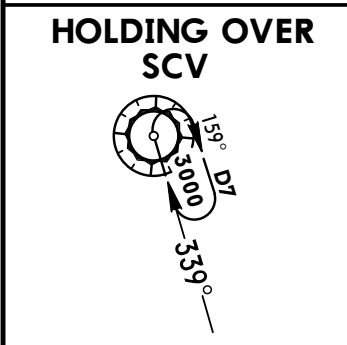
Alt Set: hPa (MM on request)
Trans level: By ATC Trans alt: 3000'



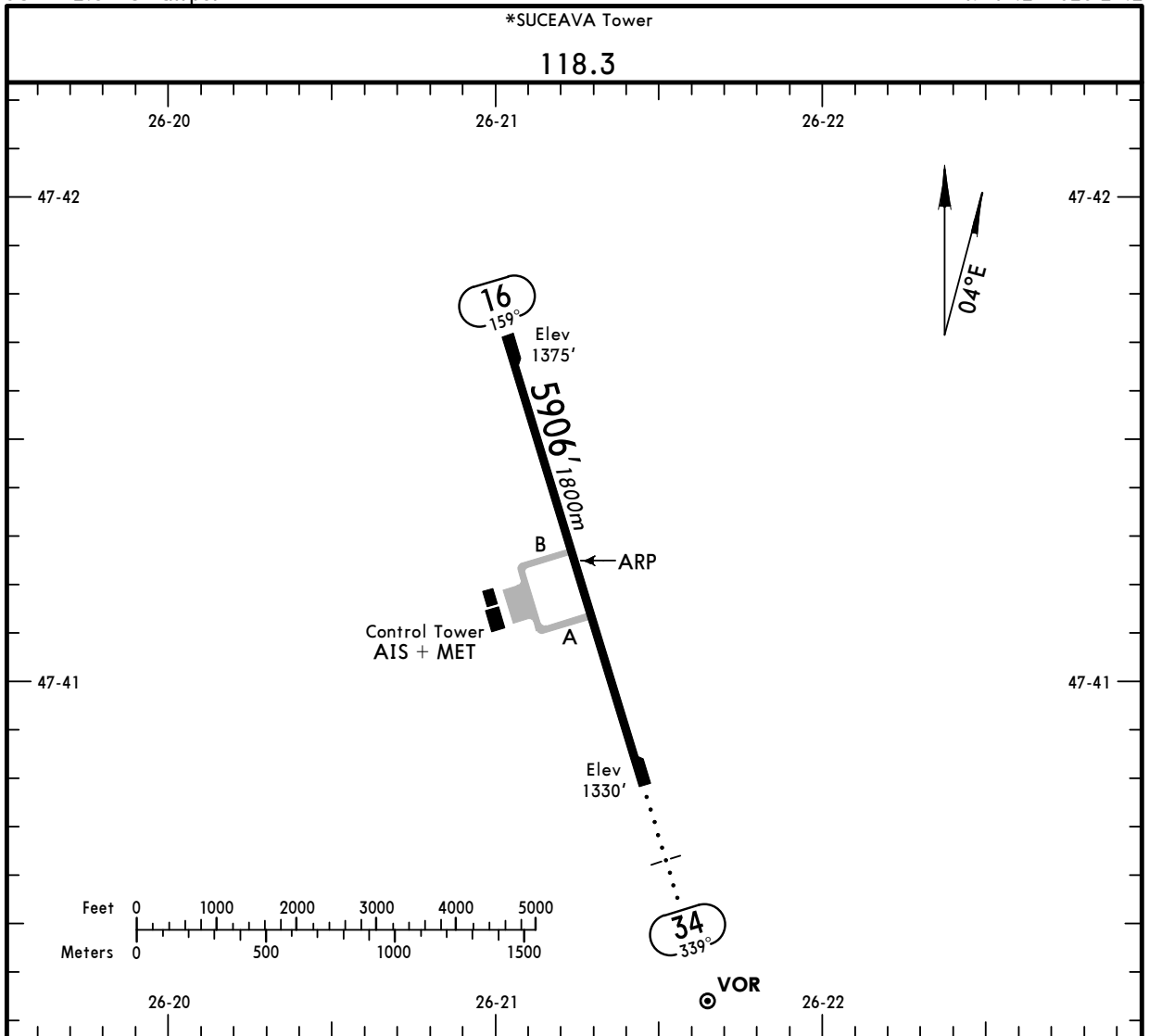
RWY 34 ARRIVALS



NOT FOR OPERATIONAL USE



1 If LR(R)-3 is active above FL40: proceed at approved FL to SCV and enter holding.



ADDITIONAL RUNWAY INFORMATION

RWY	USABLE LENGTHS	LANDING BEYOND		TAKE-OFF	WIDTH
		Threshold	Glide Slope		
16	RL (50m) TDZ				98'
34	RL (50m) ALS TDZ				30m

JAR-OPS

TAKE-OFF 1

	All Rwy's		
	LVP must be in Force		
	RCLM (DAY only) or RL	RCLM (DAY only) or RL	NIL (DAY only)
A			
B	250m	400m	500m
C			
D	300m		

1 Operators applying U.S. Ops Specs: CL required below 300m.

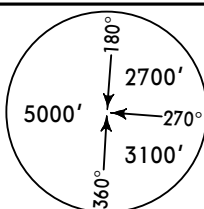
NOT FOR OPERATIONAL USE

*SUCEAVA Tower (APP/TWR)

118.3

BRIEFING STRIP™

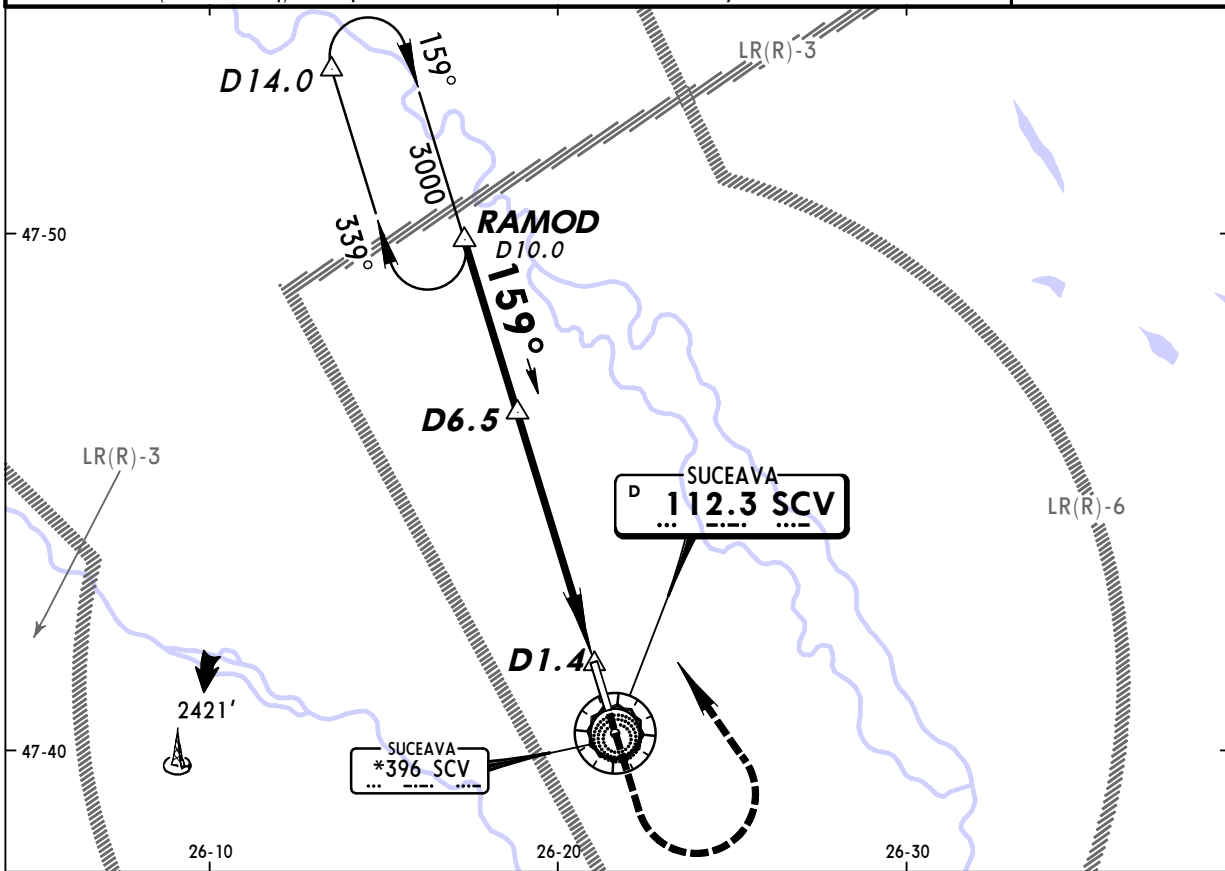
VOR SCV 112.3	Final Apch Crs 159°	Minimum Alt D6.5 3000' (1625')	MDA(H) 1760' (385')	Apt Elev 1375'
----------------------------	----------------------------------	--	-------------------------------	-----------------------



MISSED APCH: Climb STRAIGHT AHEAD to 2100', then turn LEFT to join R-339 climbing to 3000' and hold at RAMOD.

Alt Set: hPa (MM on req) Apt Elev: 49 hPa Trans level: By ATC Trans alt: 3000'

MSA SCV VOR



SCV DME	5.0	4.0	3.0
ALTITUDE	2580'	2260'	1940'



Gnd speed-Kts	70	90	100	120	140	160	2100'	3000'	SCV 112.3 RAMOD			
Descent Gradient 5.2%	369	474	527	632	737	843				↑	←	R-339
MAP at D1.4												

JAR-OPS				STRAIGHT-IN LANDING RWY 16		CIRCLE-TO-LAND		
				MDA(H)	1760' (385')	Max Kts		
A						100	1860' (485')	1500m
B		RVR	1500m			135	1880' (505')	1600m
C		RVR	1800m			180	2030' (655')	2400m
D		RVR	2000m			205	2080' (705')	3600m

NOT FOR OPERATIONAL USE

*SUCEAVA Tower (APP/TWR)

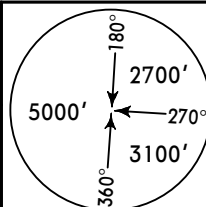
118.3

BRIEFING STRIP

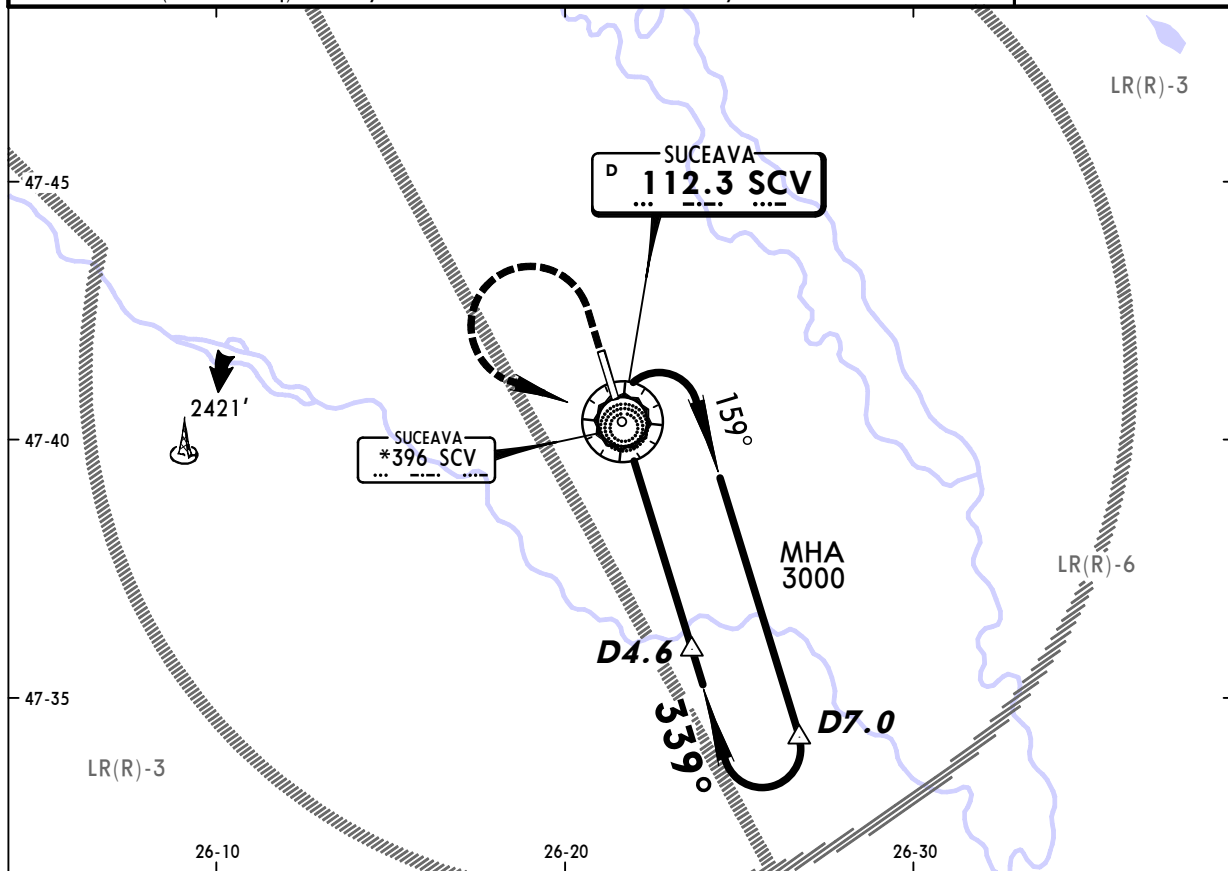
VOR SCV 112.3	Final Apch Crs 339°	Minimum Alt D4.6 3000' (1670')	MDA(H) Refer to Minimums	Apt Elev 1375' RWY1330'
----------------------------	----------------------------------	---	--------------------------------	----------------------------

MISSED APCH: Climb STRAIGHT AHEAD to 2100', then turn LEFT to VOR climbing to 3000' and hold.

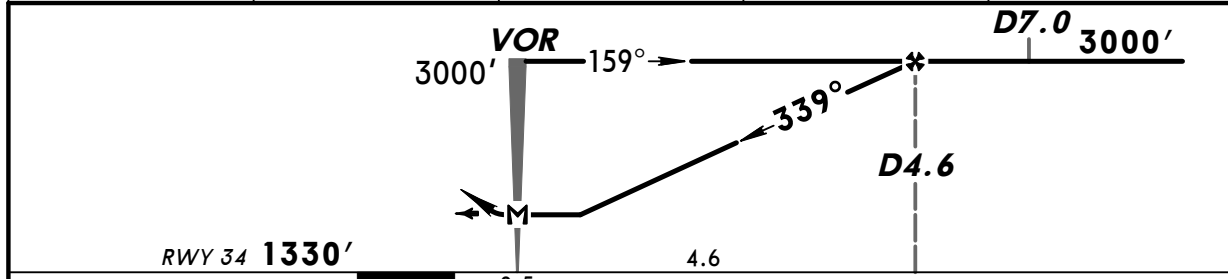
Alt Set: hPa (MM on req) Rwy Elev: 48 hPa Trans level: By ATC Trans alt: 3000'



MSA SCV VOR



SCV DME	1.0	2.0	3.0	4.0
ALTITUDE	1850'	2170'	2490'	2810'



Gnd speed-Kts	70	90	100	120	140	160	ALS 2100' 3000' SCV 112.3
Descent Gradient 5.2%	369	474	527	632	737	843	
MAP at VOR							

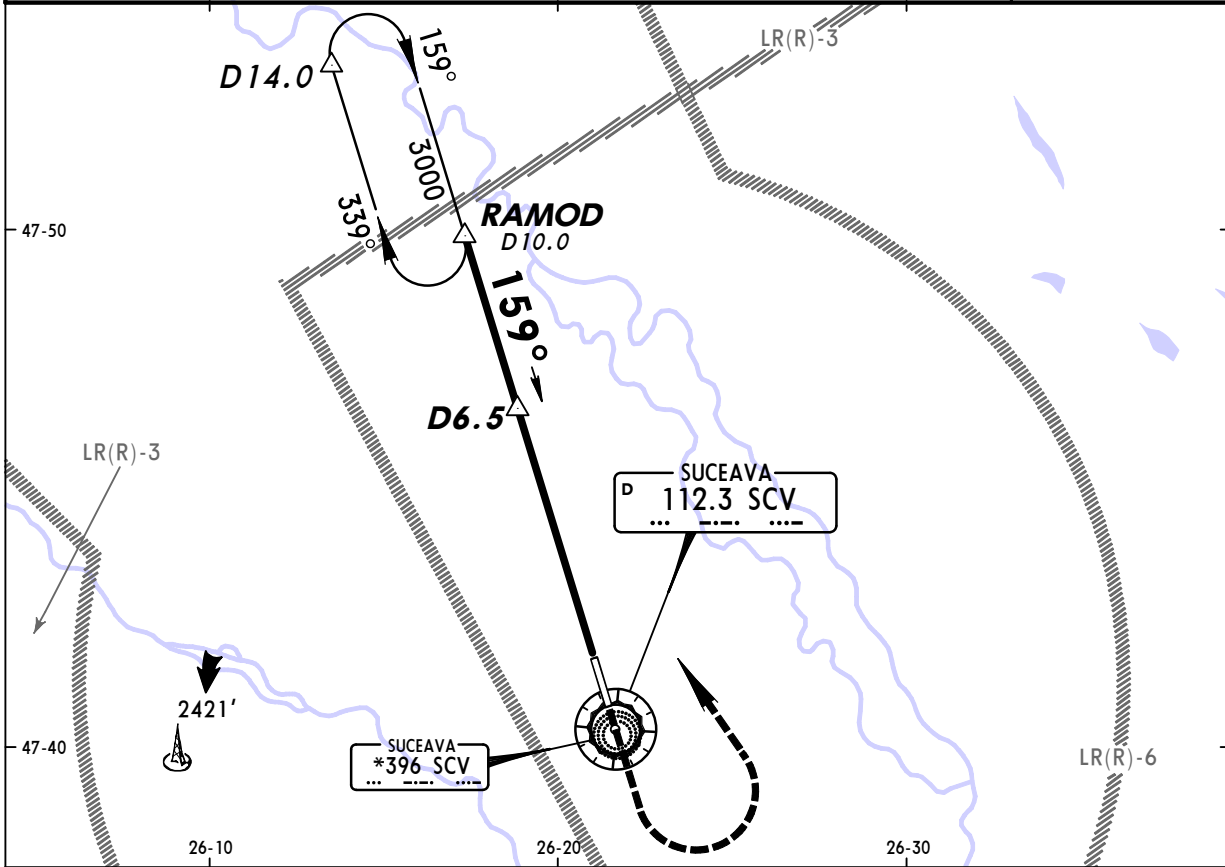
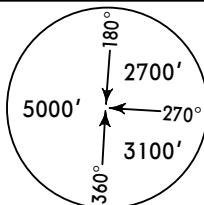
JAR-OPS		STRAIGHT-IN LANDING RWY 34		CIRCLE-TO-LAND	
		MDA(H) C:1680'(350') AB:1650'(320') D:1690'(360')		Max Kts	
		ALS out		MDA(H) VIS	
A	RVR 1300m	RVR 1500m		100	1860'(485') 1500m
B	RVR 1400m	RVR 1500m		135	1880'(505') 1600m
C	RVR 1600m	RVR 1800m		180	2030'(655') 2400m
D	RVR 1800m	RVR 2000m		205	2080'(705') 3600m

NOT FOR OPERATIONAL USE

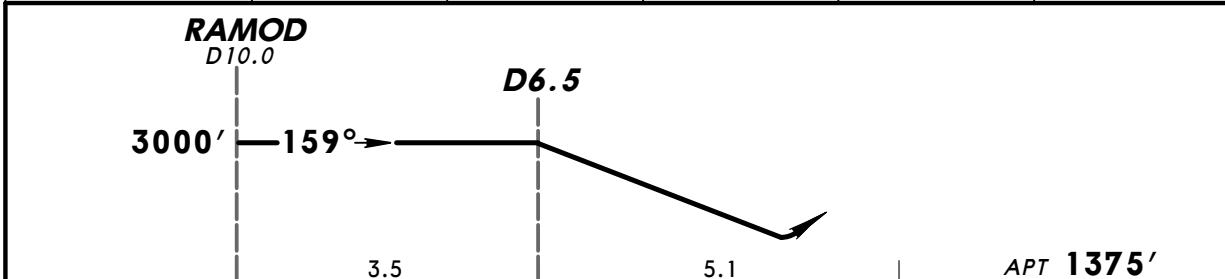
PANS OPS 4

BRIEFING STRIP™

*SUCEAVA Tower (APP) 118.3		*SUCEAVA Precision 120.9		*SUCEAVA Tower 118.3	
RADAR	Final Apch Crs 159°	PAR GS D6.5 3000' (1625')	PAR DA(H) 1575' (200')	Apt Elev 1375'	
MISSED APCH: Climb STRAIGHT AHEAD to 2100', then turn LEFT to join R-339 climbing to 3000' and hold at RAMOD.					
Alt Set: hPa (MM on req) Apt Elev: 49 hPa Trans level: By ATC Trans alt: 3000'					MSA SCV VOR



DIST to TDZ	5.0	4.0	3.0	2.0	1.0
ALTITUDE	2970'	2650'	2330'	2020'	1700'



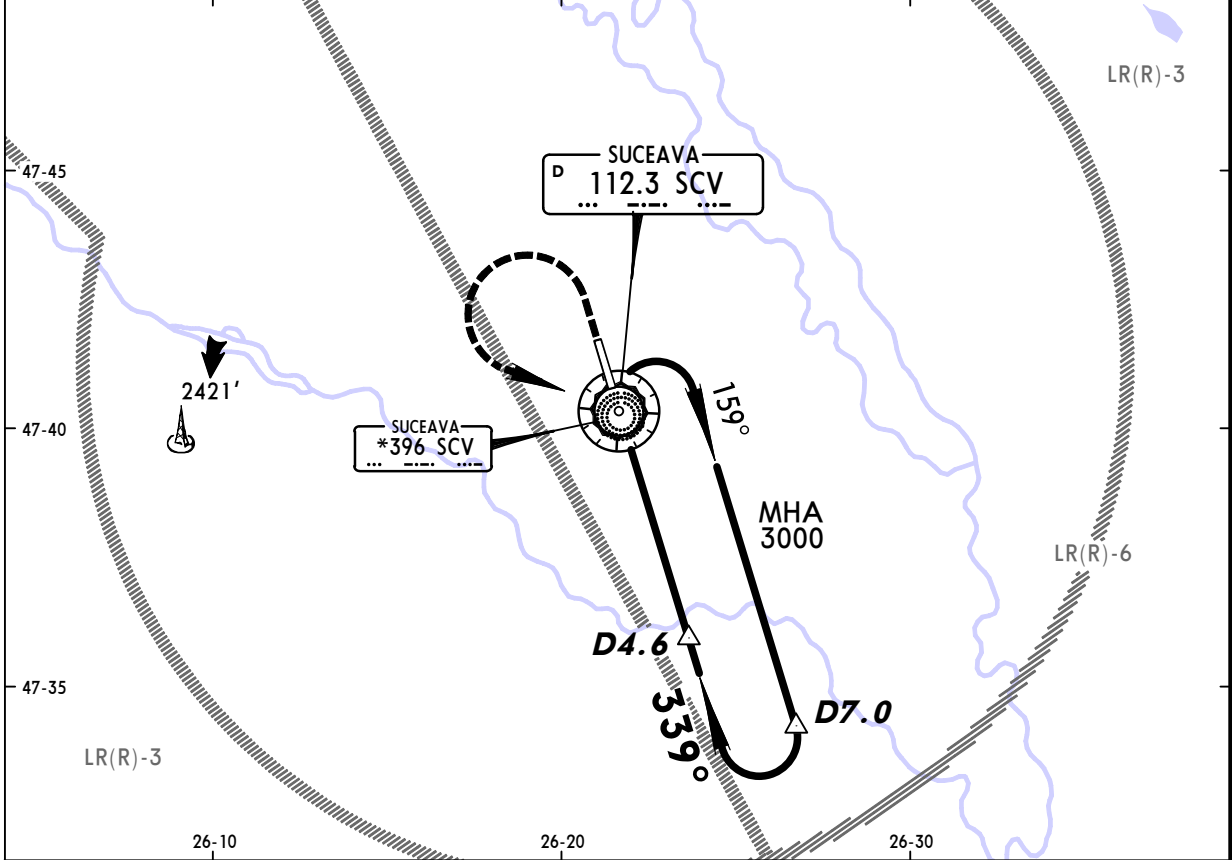
Gnd speed-Kts	70	90	100	120	140	160	2100'	3000'	SCV 112.3 RAMOD
PAR GS 3.00°	377	484	538	646	753	861			

JAR-OPS			STRAIGHT-IN LANDING RWY 16		CIRCLE-TO-LAND		
DA(H) 1575' (200')			RVR 1000m		Max Kts	MDA(H)	VIS
A					100	1860' (485')	1500m
B					135	1880' (505')	1600m
C					180	2030' (655')	2400m
D					205	2080' (705')	3600m

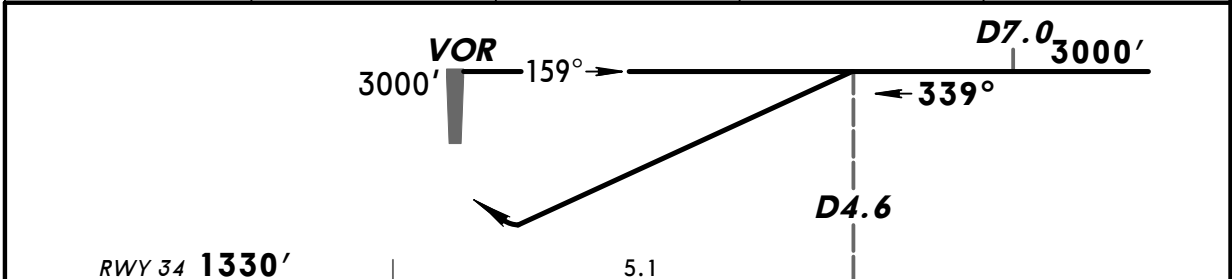
NOT FOR OPERATIONAL USE
PANS OPS 4

BRIEFING STRIP™

*SUCEAVA Tower (APP) 118.3		*SUCEAVA Precision 120.9		*SUCEAVA Tower 118.3	
RADAR	Final Apch Crs 339°	PAR GS D4.6 3000' (1670')	PAR DA(H) 1530' (200')	Apt Elev 1375'	RWY 1330'
MISSED APCH: Climb STRAIGHT AHEAD to 2100', then turn LEFT to VOR climbing to 3000' and hold.					
Alt Set: hPa (MM on req)		Rwy Elev: 48 hPa	Trans level: By ATC	Trans alt: 3000'	MSA SCV VOR



DIST to TDZ	1.0	2.0	3.0	4.0
ALTITUDE	1650'	1970'	2290'	2610'



Gnd speed-Kts	70	90	100	120	140	160	ALS	2100'	3000'	SCV 112.3
PAR GS 3.00°	377	484	538	646	753	861				

JAR-OPS		STRAIGHT-IN LANDING RWY 34		CIRCLE-TO-LAND	
DA(H) 1530' (200')		ALS out		Max Kts	MDA(H) VIS
A	RVR 800m	RVR 1000m	100	1860' (485')	1500m
B			135	1880' (505')	1600m
C			180	2030' (655')	2400m
D			205	2080' (705')	3600m

NOT FOR OPERATIONAL USE
PANS OPS 4