

ADDITIONAL RUNWAY INFORMATION

RWY	HIRL (60m) ALS	USABLE LENGTHS			WIDTH
		Threshold	Glide Slope	TAKE-OFF	
01	HIRL (60m) ALS				148'
19	HIRL (60m) ALS (orange)				45m

JAR-OPS

TAKE-OFF 1

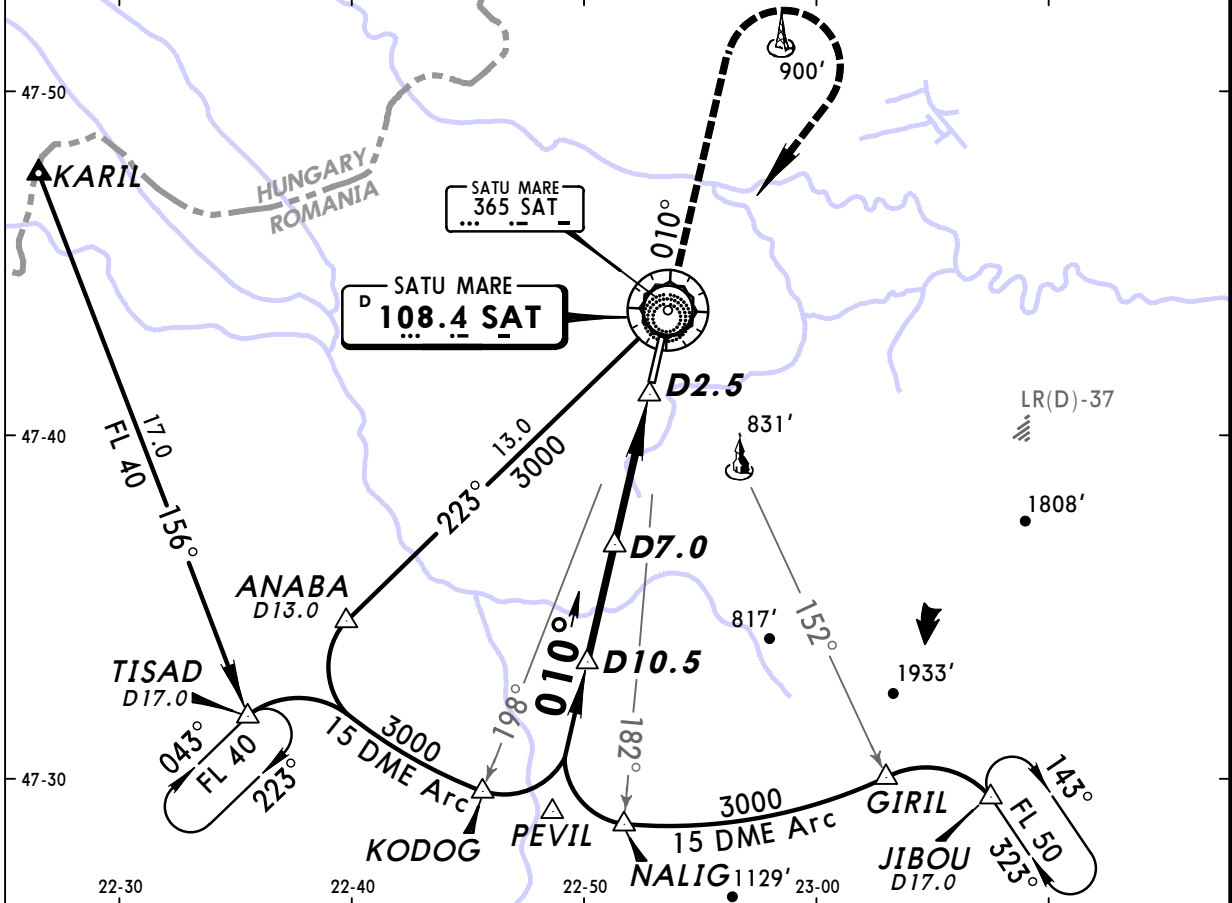
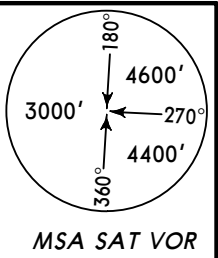
	All Rwy's		
	LVP must be in force		
	RCLM (DAY only) or RL	RCLM (DAY only) or RL	NIL (DAY only)
A			
B	250m	400m	500m
C			
D	300m		

1 Operators applying U.S. Ops Specs: CL required below 300m.

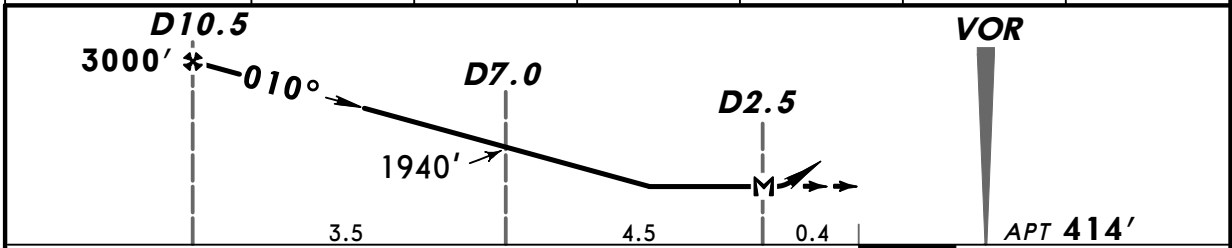
NOT FOR OPERATIONAL USE

BRIEFING STRIP

Approach Control through Tower *SATU MARE Tower 118.8				
VOR SAT <b>108.4</b>	Final Apch Crs <b>010°</b>	Minimum Alt <b>D10.5</b> 3000' (2586')	MDA(H) <b>790'</b> (376')	Apt Elev <b>414'</b>
<b>MISSED APCH: Climb STRAIGHT AHEAD to 1600', then turn RIGHT to VOR climbing to 3000' and follow R-223.</b>				
Alt Set: hPa (MM on req) Procedure based on 240 KT.		Apt Elev: 15 hPa	Trans level: By ATC	Trans alt: 3000'



SAT DME	10.0	9.0	8.0	6.0	5.0	4.0
ALTITUDE	2850'	2550'	2240'	1640'	1330'	1030'



Gnd speed-Kts	70	90	100	120	140	160	ALS 1600'
Descent Gradient 5.0%	354	456	506	608	709	810	
MAP at D2.5							

JAR-OPS STRAIGHT-IN LANDING RWY 01			CIRCLE-TO-LAND	
MDA(H) <b>790'</b> (376')			Max Kts	MDA(H) VIS
A	RVR 1300m	ALS out	100	900' (486') 1500m
B	RVR 1400m	RVR 1500m	135	920' (506') 1600m
C	RVR 1600m	RVR 1800m	180	1200' (786') 2400m
D	RVR 1800m	RVR 2000m	205	1200' (786') 3600m

NOT FOR OPERATIONAL USE

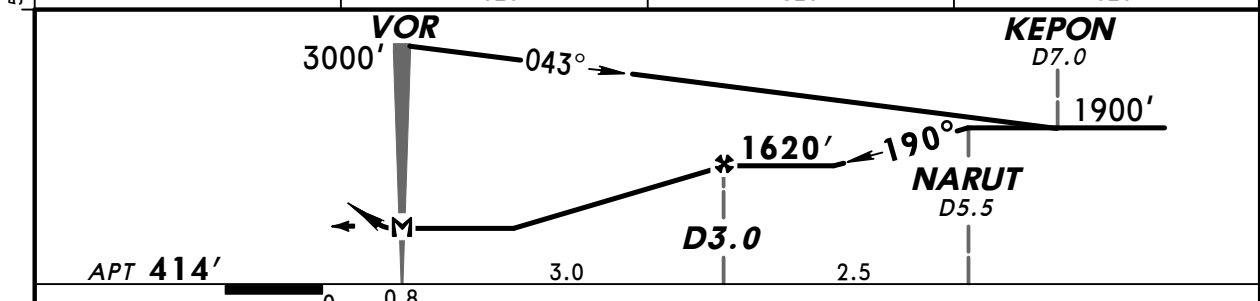
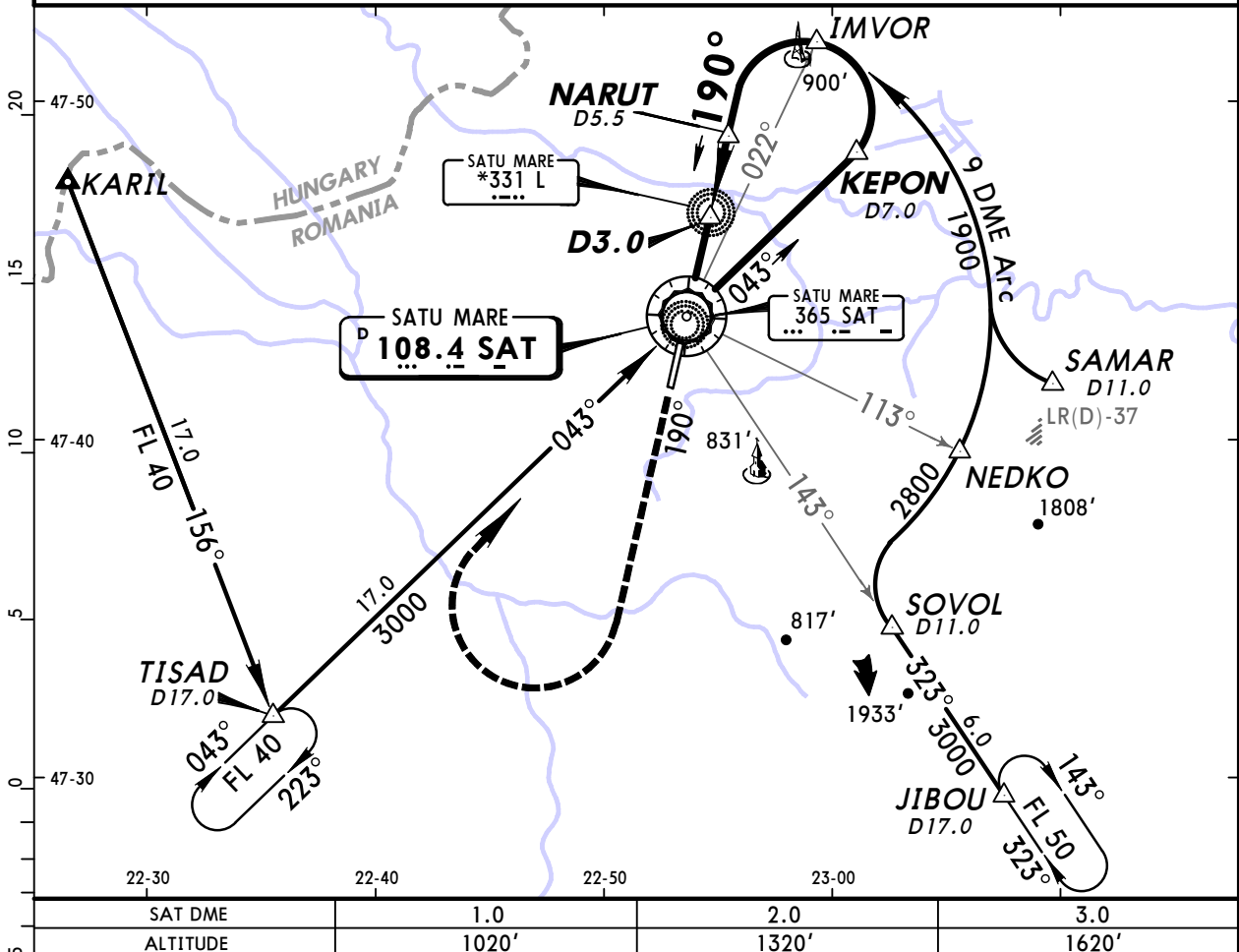
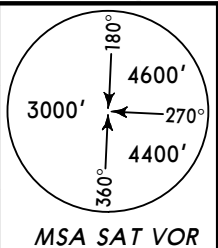
PANS OPS 4

Approach Control through Tower  
\*SATU MARE Tower  
**118.8**

<b>VOR SAT</b> <b>108.4</b>	<i>Final Apch Crs</i> <b>190°</b>	<i>Minimum Alt</i> <b>D3.0</b> <b>1620' (1206')</b>	<i>MDA(H)</i> <b>710' (296')</b>	<i>Apt Elev</i> <b>414'</b>
--------------------------------	--------------------------------------	---	-------------------------------------	-----------------------------

**MISSED APCH: Climb STRAIGHT AHEAD to 1200', then turn RIGHT to VOR climbing to 3000'.**

Alt Set: hPa (MM on req)      Apt Elev: 15 hPa      Trans level: By ATC      Trans alt: 3000'  
Procedure based on 240 KT.



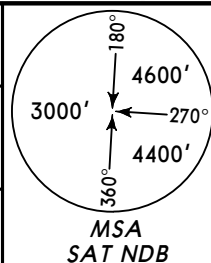
<i>Gnd speed-Kts</i>	70	90	100	120	140	160	 <b>1200'</b> 	
<i>Descent Gradient</i>	5.0%	354	456	506	608	709		810
<i>MAP at VOR</i>								

<b>JAR-OPS</b>				<b>STRAIGHT-IN LANDING RWY 19</b>		<b>CIRCLE-TO-LAND</b>	
				<i>MDA(H)</i> <b>710' (296')</b>			
				<i>ALS out</i>		<i>Max Kts</i>	
<b>A</b>	RVR 1200m			RVR 1500m	100	<i>MDA(H)</i> <b>900' (486')</b>	<i>VIS</i> 1500m
<b>B</b>	RVR 1300m			RVR 1600m	135	<b>920' (506')</b>	1600m
<b>C</b>	RVR 1400m			RVR 1800m	180	<b>1200' (786')</b>	2400m
<b>D</b>	RVR 1600m				205	<b>1200' (786')</b>	3600m

**NOT FOR OPERATIONAL USE**

**PANS OPS 4**

Approach Control through Tower  
\*SATU MARE Tower  
118.8

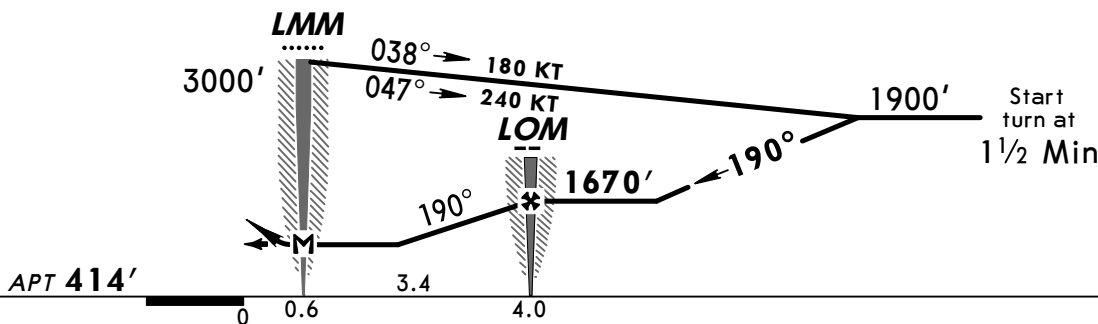
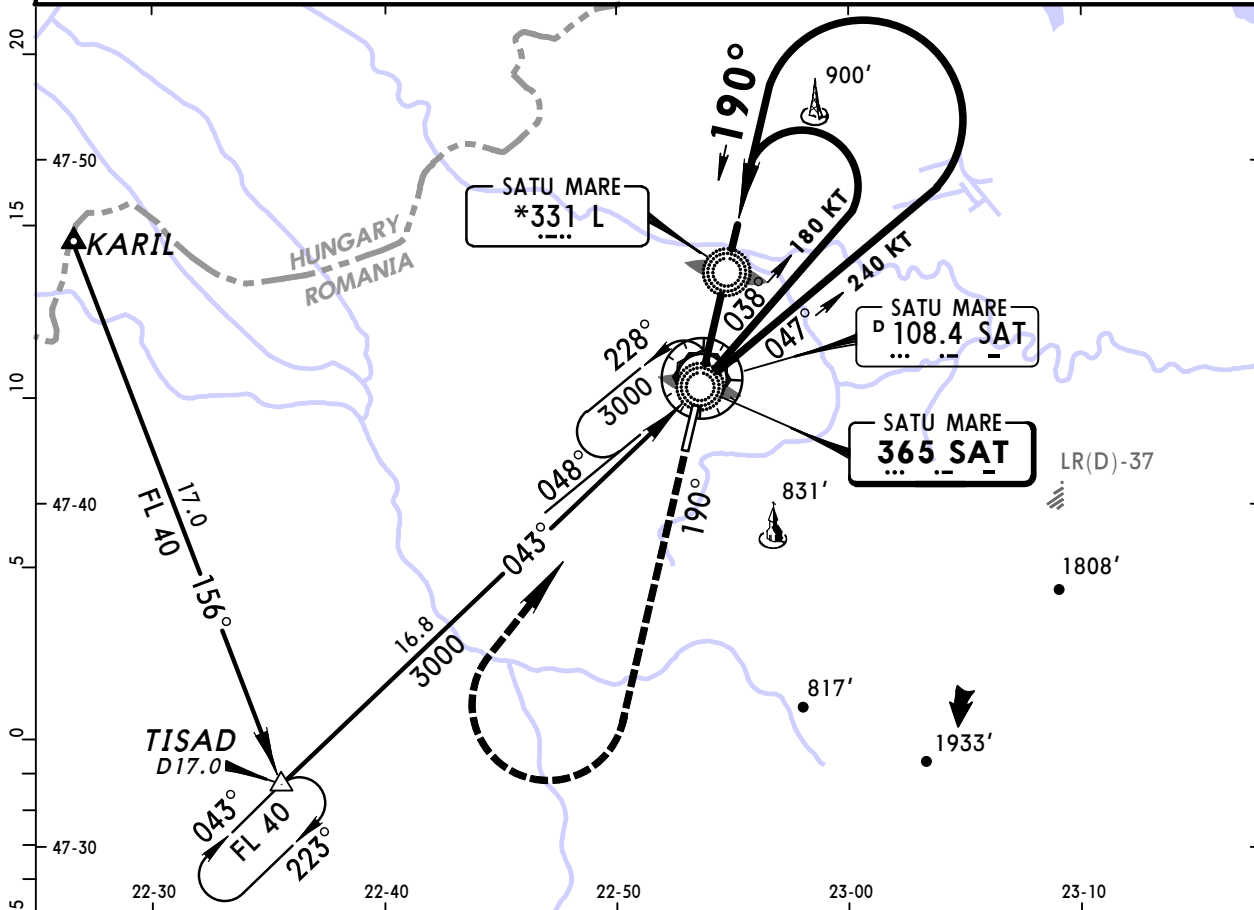


BRIEFING STRIP™

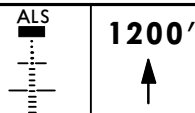
NDB SAT <b>365</b>	Final Apch Crs <b>190°</b>	Minimum Alt <b>LOM</b> <b>1670'</b> (1256')	MDA(H) <b>770'</b> (356')	Apt Elev <b>414'</b>
-----------------------	-------------------------------	---	------------------------------	----------------------

**MISSED APCH: Climb STRAIGHT AHEAD to 1200', then turn RIGHT to SAT NDB climbing to 3000'.**

Alt Set: hPa (MM on req)      Apt Elev: 15 hPa      Trans level: By ATC      Trans alt: 3000'



Gnd speed-Kts	70	90	100	120	140	160
Descent Gradient 5.0%	354	456	506	608	709	810
MAP at LMM						

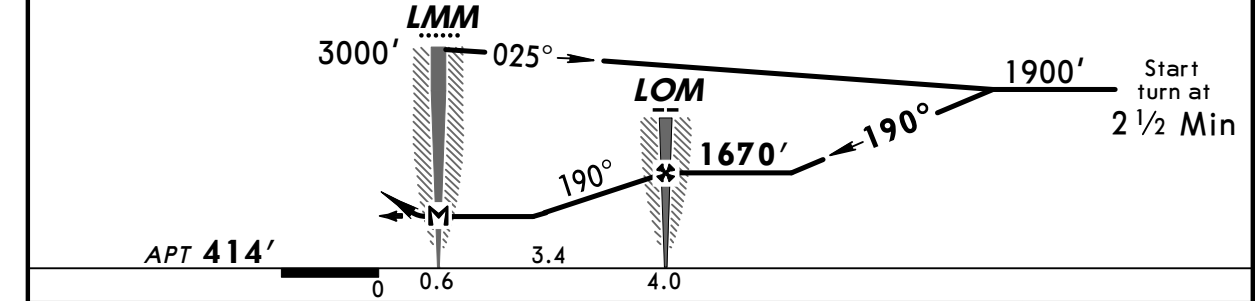
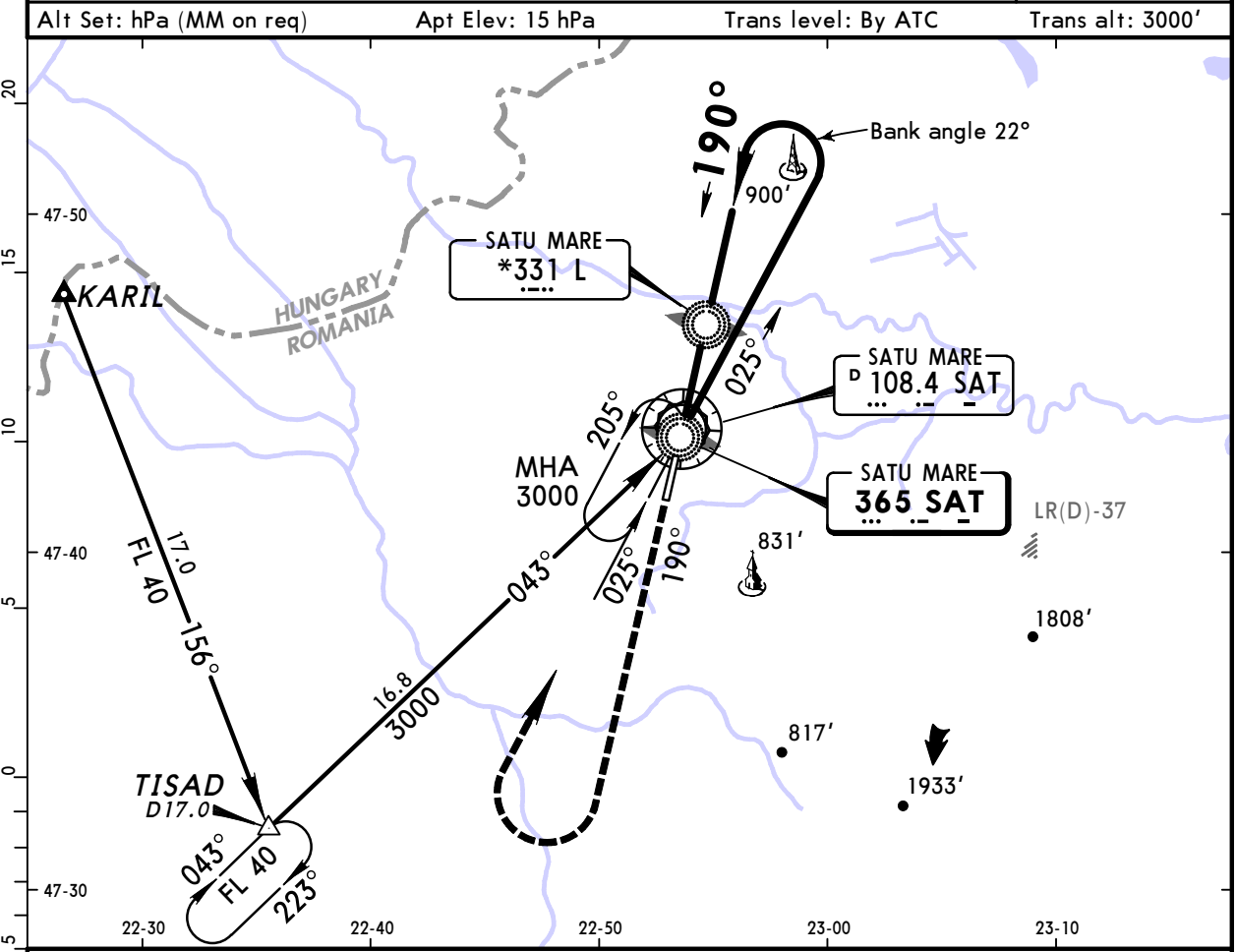


<b>JAR-OPS</b> STRAIGHT-IN LANDING RWY 19			CIRCLE-TO-LAND		
MDA(H) <b>770'</b> (356')			MDA(H) _____ VIS _____		
ALS out			Max Kts		
A	SEE 16-2		A	SEE 16-2	
B	SEE 16-2		B	SEE 16-2	
C	RVR 1600m	RVR 1800m	180	1200' (786')	2400m
D	RVR 1800m	RVR 2000m	205	1200' (786')	3600m

NOT FOR OPERATIONAL USE

PANS OPS 4

Approach Control through Tower *SATU MARE Tower 118.8					
NDB SAT <b>365</b>	Final Apch Crs <b>190°</b>	Minimum Alt <b>LOM</b> <b>1670'</b> (1256')	MDA(H) <b>770'</b> (356')	Apt Elev <b>414'</b>	
<b>MISSED APCH: Climb STRAIGHT AHEAD to 1200', then turn RIGHT to SAT NDB climbing to 3000'.</b>					
Alt Set: hPa (MM on req)		Apt Elev: 15 hPa		Trans level: By ATC	



Gnd speed-Kts	70	90	100	120	140	160		<b>1200'</b> ↑
Descent Gradient 5.0%	354	456	506	608	709	810		
MAP at LMM								

JAR-OPS STRAIGHT-IN LANDING RWY 19			CIRCLE-TO-LAND		
MDA(H) <b>770'</b> (356')			Max Kts		
A	RVR 1300m	ALS out	100	MDA(H) <b>900'</b> (486')	VIS <b>1500m</b>
B	RVR 1400m	RVR 1500m	135	<b>920'</b> (506')	<b>1600m</b>
C	SEE 16-1		C	SEE 16-1	
D	SEE 16-1		D	SEE 16-1	

NOT FOR OPERATIONAL USE

PANS OPS 4