

ADDITIONAL RUNWAY INFORMATION

RWY	USABLE LENGTHS			TAKE-OFF	WIDTH
	LANDING BEYOND				
	Threshold	Glide Slope			
15	HIRL (60m) HIALS	4630' 1411m			98' 30m
33	HIRL (60m) SALS PAPI-L (angle 3.5°)				

Standard

TAKE-OFF 1

All Rwys

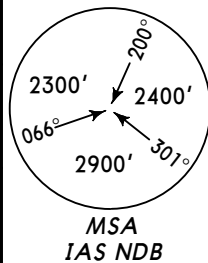
	LVP must be in Force		
	RCLM (DAY only) or RL	RCLM (DAY only) or RL	NIL (DAY only)
A			
B	250m	400m	500m
C			
D	NOT APPLICABLE		

1 Operators applying U.S. Ops Specs: CL required below 300m.

NOT FOR OPERATIONAL USE

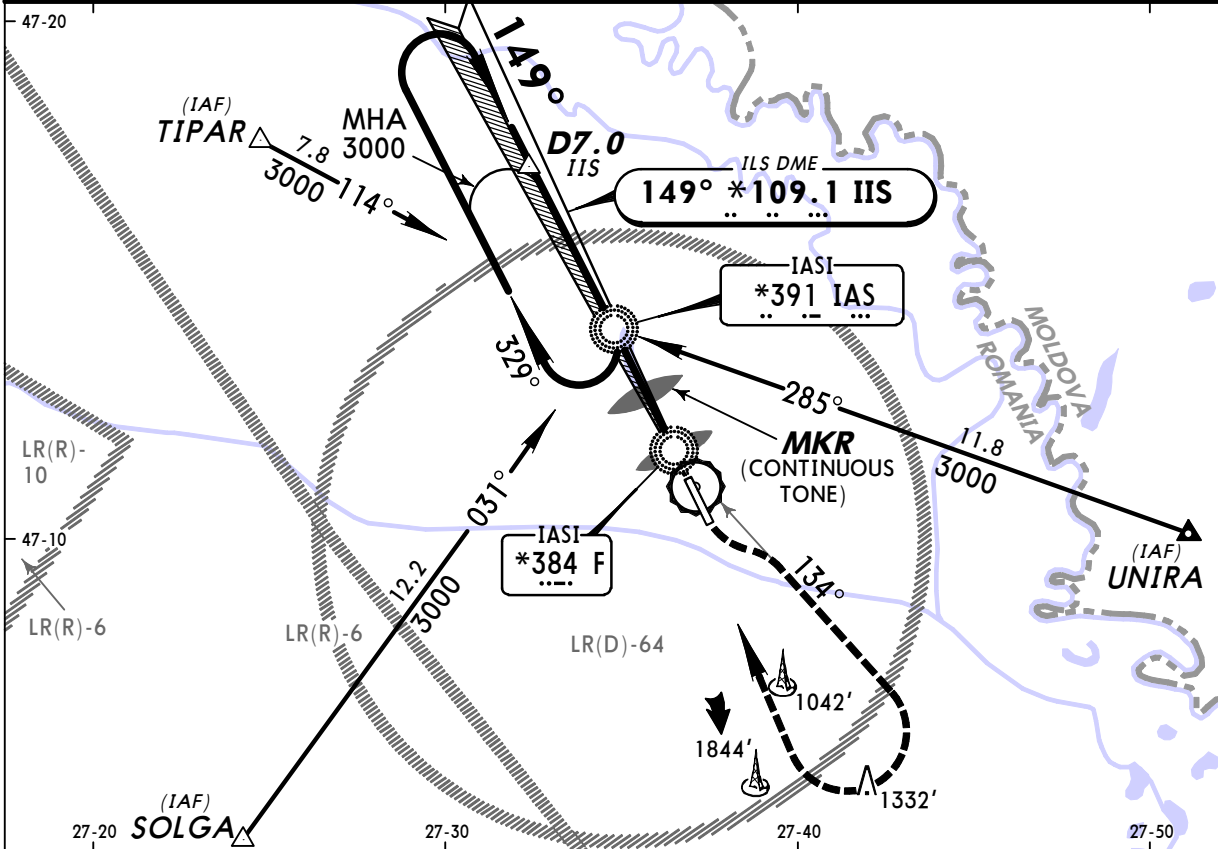
BRIEFING STRIP™

Approach Control through Tower IASI Tower 119.2				
LOC IIS *109.1	Final Apch Crs 149°	GS D7.0 IIS 2630' (2233')	ILS DA(H) Refer to Minimums	Apt Elev 397'

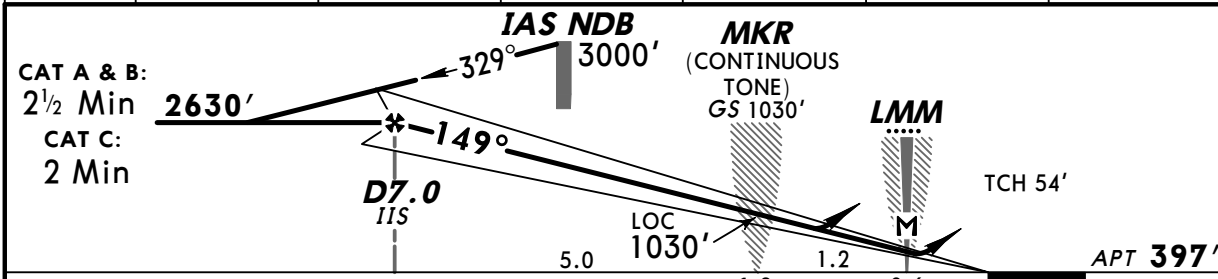


**MISSED APCH:** Climb on Rwy track to 800', then turn LEFT, intercept and follow 134° from F Lctr climbing to 2100'. Turn RIGHT to IAS NDB and join holding at 3000'.

Alt Set: hPa/MB (MM on req) Apt Elev: 14 hPa Trans level: By ATC Trans alt: 3000'



LOC (GS out)	IIS DME ALTITUDE	6.0 2310'	5.0 1990'	4.0 1680'	3.0 1360'	2.0 1040'
--------------	------------------	-----------	-----------	-----------	-----------	-----------



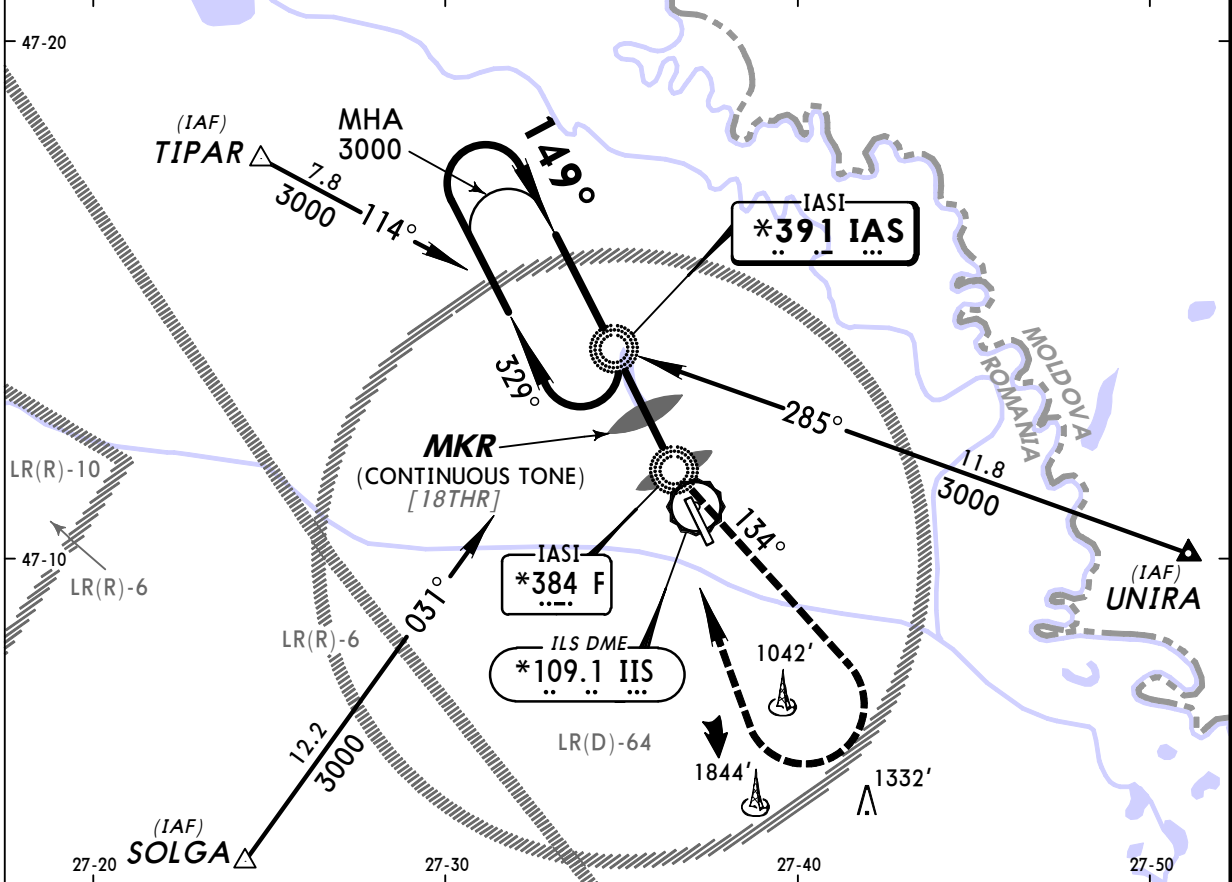
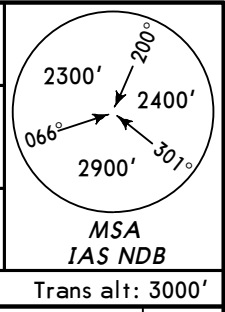
Gnd speed-Kts	70	90	100	120	140	160	HIALS	800'	Rwy on track	2100'	134° from F
ILS GS or LOC Desc angle 3.00°	377	484	538	646	753	861				384	
MAP at LMM											

Standard STRAIGHT-IN LANDING RWY 15					CIRCLE-TO-LAND		
ILS DA(H) AB: 597' (200') C: 735' (338')			LOC (GS out) DA(H) 830' (433')		Max Kts	MDA(H) VIS	
FULL	Limited	ALS out	ALS out				
A	RVR 550m	RVR 750m	RVR 1200m	RVR 1300m	100	1200' (803') 1500m	
B	RVR 800m	RVR 800m	RVR 1500m	RVR 2000m	135	1200' (803') 1600m	
C	NOT APPLICABLE					C	NOT APPLICABLE
D	NOT APPLICABLE					D	NOT APPLICABLE

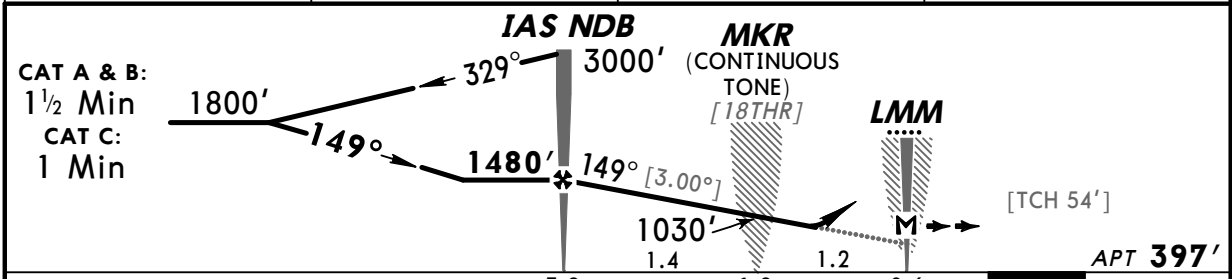
NOT FOR OPERATIONAL USE  
PANS OPS 4

BRIEFING STRIP™

Approach Control through Tower IASI Tower <b>119.2</b>				
<b>NDB IAS</b> <b>*391</b>	<b>Final Apch Crs</b> <b>149°</b>	<b>Minimum Alt</b> <b>IAS NDB</b> <b>1480' (1083')</b>	<b>DA(H)</b> Refer to Minimums	<b>Apt Elev</b> <b>397'</b>
<b>MISSED APCH:</b> Climb on track 134° to 2100', then turn RIGHT to IAS NDB and join holding at 3000'.				
Alt Set: hPa/MB (MM on req)		Apt Elev: 14 hPa	Trans level: By ATC	Trans alt: 3000'



IIS DME	3.4	3.0	2.0
ALTITUDE	1480'	1360'	1040'



<b>Gnd speed-Kts</b>	70	90	100	120	140	160	HIALS	2100'	on 134°	
<b>Descent angle 3.00°</b>	372	478	531	637	743	849				LT
<b>MAP at LMM or IAS NDB to MAP 2.6</b>	2:14	1:44	1:34	1:18	1:07	0:59				

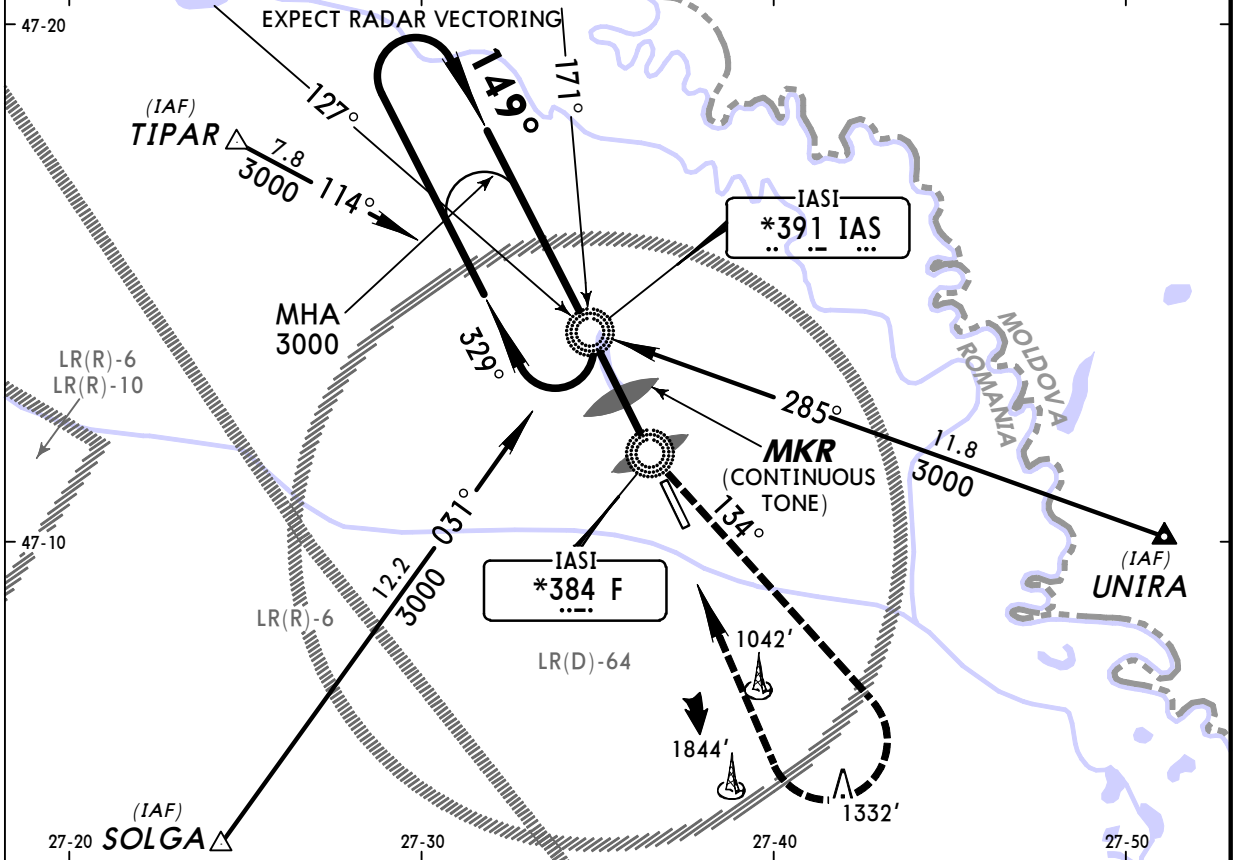
<b>Standard</b>				<b>STRAIGHT-IN LANDING RWY 15</b>		<b>CIRCLE-TO-LAND</b>	
DA(H) AB: <b>980' (583')</b>		C: <b>1030' (633')</b>		Max Kts	MDA(H)	VIS	
A	RVR 2000m	ALS out		100	1200' (803')	2700m	
B	CMV 2200m	CMV 2700m		135			
C	CMV 2200m	CMV 2900m		C	NOT APPLICABLE		
D	NOT APPLICABLE			D	NOT APPLICABLE		

NOT FOR OPERATIONAL USE

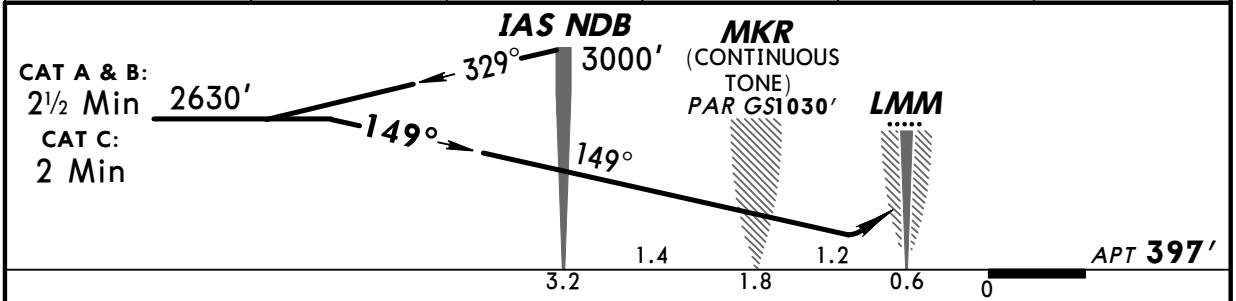
PANS OPS 4

BRIEFING STRIP™

IASI Precision (PAR) <b>118.8</b>			Approach Control through Tower IASI Tower <b>119.2</b>		
<i>RADAR</i>	<i>Final Apch Crs</i> <b>149°</b>	<i>PAR GS MKR</i> <b>1030' (633')</b>	<i>PAR DA(H)</i> Refer to Minimums	<i>Apt Elev</i> <b>397'</b>	
<b>MISSED APCH: Climb to F Lctr, then turn LEFT on track 134° climbing to 2100', then turn RIGHT to IAS NDB and join holding at 3000'.</b>					
Alt Set: hPa/MB (MM on req) Apt Elev: 14 hPa Trans level: By ATC Trans alt: 3000'					<b>MSA IAS NDB</b>



DIST to THR	6.0	5.0	4.0	3.0	2.0
ALTITUDE	2360'	2040'	1730'	1410'	1090'



Gnd speed-Kts	70	90	100	120	140	160	HIALS 	F <b>384</b>	<b>2100'</b> on <b>134°</b> LT
PAR GS 3.00°	377	484	538	646	753	861			

<b>Standard</b> STRAIGHT-IN LANDING RWY 15				CIRCLE-TO-LAND					
DA(H) AB: <b>725' (328')</b> C: <b>735' (338')</b>				ALS out					
A	RVR 800m		RVR 1500m		Max Kts	MDA(H)		VIS	
B					100	<b>1200' (803')</b>		<b>1500m</b>	
C	NOT APPLICABLE		NOT APPLICABLE		135	<b>1200' (803')</b>		<b>1600m</b>	
D					C	NOT APPLICABLE		D	NOT APPLICABLE

NOT FOR OPERATIONAL USE

PANS OPS 4