

ADDITIONAL RUNWAY INFORMATION

RWY	USABLE LENGTHS	LANDING BEYOND		TAKE-OFF	WIDTH
		Threshold	Glide Slope		
09	RL (60m)			<b>1</b>	148'
27	RL (60m) HIALS				45m

**1 TAKE-OFF RUN AVAILABLE**  
**RWY 09:**  
 From rwy head 8202' (2500m)  
 twy B int 6562' (2000m)

**JAR-OPS TAKE-OFF 1**

	All Rwys		
	LVP must be in Force		
	RCLM (DAY only) or RL	RCLM (DAY only) or RL	NIL (DAY only)
A			
B	250m	400m	500m
C			
D	300m		

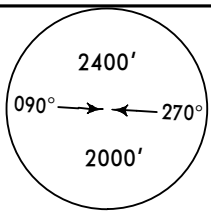
**1** Operators applying U.S. Ops Specs: CL required below 300m.

NOT FOR OPERATIONAL USE

Approach Control through Tower  
\*CRAIOVA Tower  
124.3

BRIEFING STRIP™

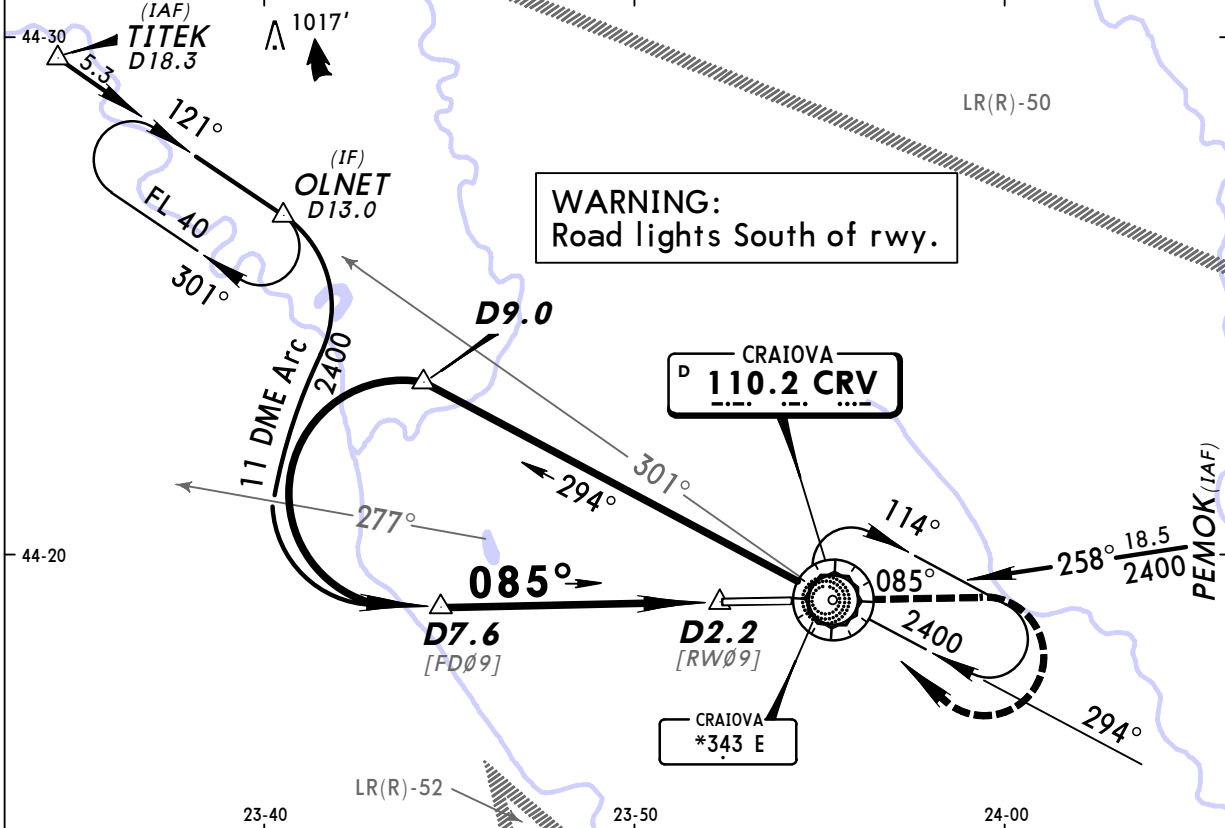
VOR CRV <b>110.2</b>	Final Apch Crs <b>085°</b>	Minimum Alt <b>D7.6</b> 2400' (1774')	MDA(H) <b>990'</b> (364')	Apt Elev <b>626'</b>
----------------------------	----------------------------------	---	------------------------------	----------------------



**MISSED APCH: Climb STRAIGHT AHEAD to 2000', then turn RIGHT to VOR climbing to 2400' and hold.**

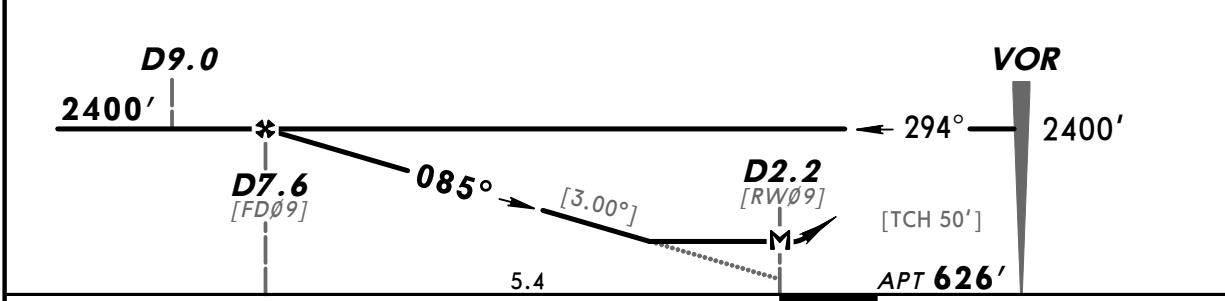
Alt Set: hPa/MB (MM on req) Apt Elev: 23 hPa Trans level: By ATC Trans alt: 3000'

MSA CRV VOR



**WARNING:**  
Road lights South of rwy.

CRV DME	7.0	6.0	5.0	4.0
ALTITUDE	2230'	1910'	1590'	1270'



Gnd speed-Kts	70	90	100	120	140	160	2000'
Descent gradient 5.24% or	372	478	531	637	743	849	
Descent angle [3.00°]							

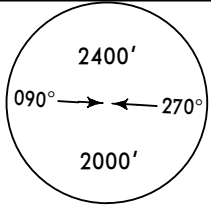
JAR-OPS		STRAIGHT-IN LANDING RWY 09		CIRCLE-TO-LAND	
	MDA(H) 990' (364')	Max Kts	MDA(H)	VIS	
A	RVR 1500m	100	1040' (414')	1500m	
B	RVR 1800m	135	1130' (504')	1600m	
C	RVR 2000m	180	1340' (714')	2400m	
D	RVR 2000m	205	1340' (714')	3600m	

NOT FOR OPERATIONAL USE

BRIEFING STRIP

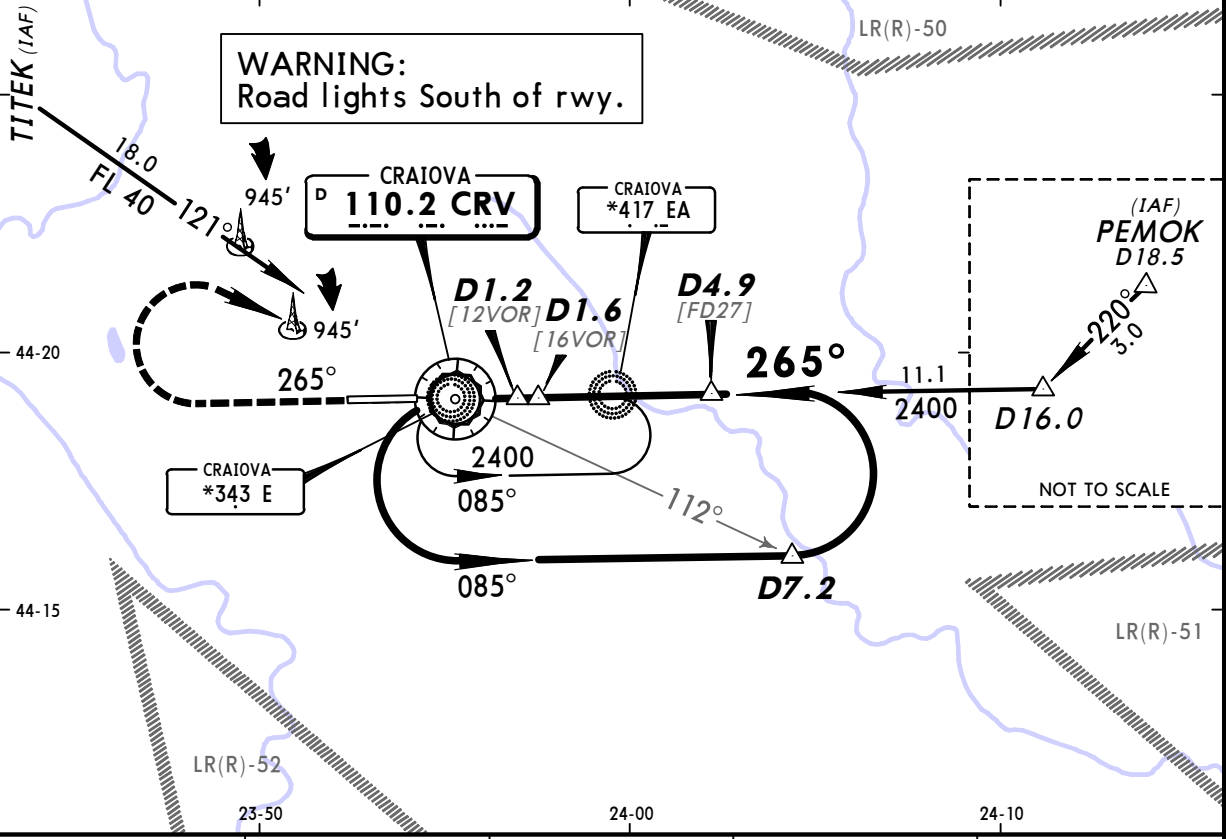
Approach Control through Tower  
\*CRAIOVA Tower  
124.3

VOR CRV <b>110.2</b>	Final Apch Crs <b>265°</b>	Minimum Alt <b>D4.9</b> 2400' (1786')	MDA(H) (CONDITIONAL) <b>910'</b> (296')	Apt Elev 626' RWY 614'
----------------------------	----------------------------------	---	---	---------------------------

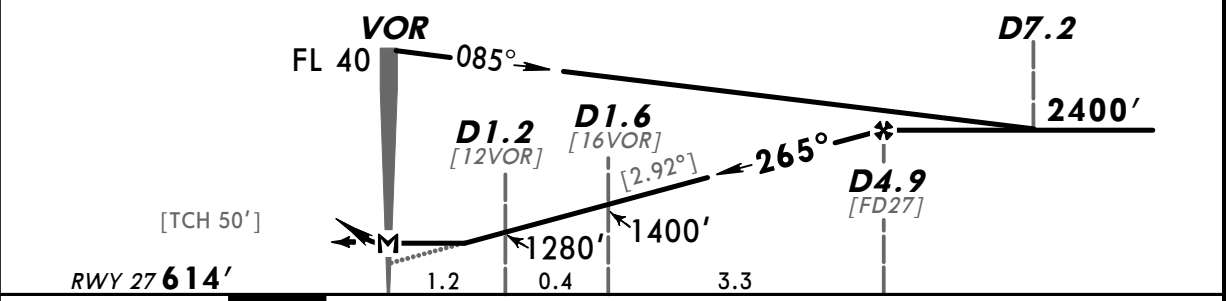


**MISSED APCH:** Climb STRAIGHT AHEAD to 2000', then turn RIGHT to VOR climbing to 2400' and hold.

Alt Set: hPa/MB (MM on req) Rwy Elev: 22 hPa Trans level: By ATC Trans alt: 3000' MSA CRV VOR



CRV DME	1.0	2.0	3.0	4.0
ALTITUDE	1220'	1520'	1820'	2130'



Gnd speed-Kts	70	90	100	120	140	160	
Descent gradient 5.10% or	362	465	517	620	723	826	
Descent angle [2.92°]							

JAR-OPS STRAIGHT-IN LANDING RWY 27				CIRCLE-TO-LAND	
with Stepdown fixes MDA(H) 910' (296')		w/o Stepdown fixes MDA(H) 970' (356')		Max Kts	MDA(H) VIS
A	ALS out	ALS out	ALS out	100	1040' (414') 1500m
B	RVR 800m	RVR 900m	RVR 1500m	135	1130' (504') 1600m
C	RVR 1600m	RVR 1000m	RVR 1800m	180	1340' (714') 2400m
D	RVR 1200m	RVR 1800m	RVR 2000m	205	1340' (714') 3600m

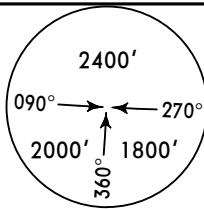
NOT FOR OPERATIONAL USE

PANS OPS 4

BRIEFING STRIP

Approach Control through Tower  
\*CRAIOVA Tower  
124.3

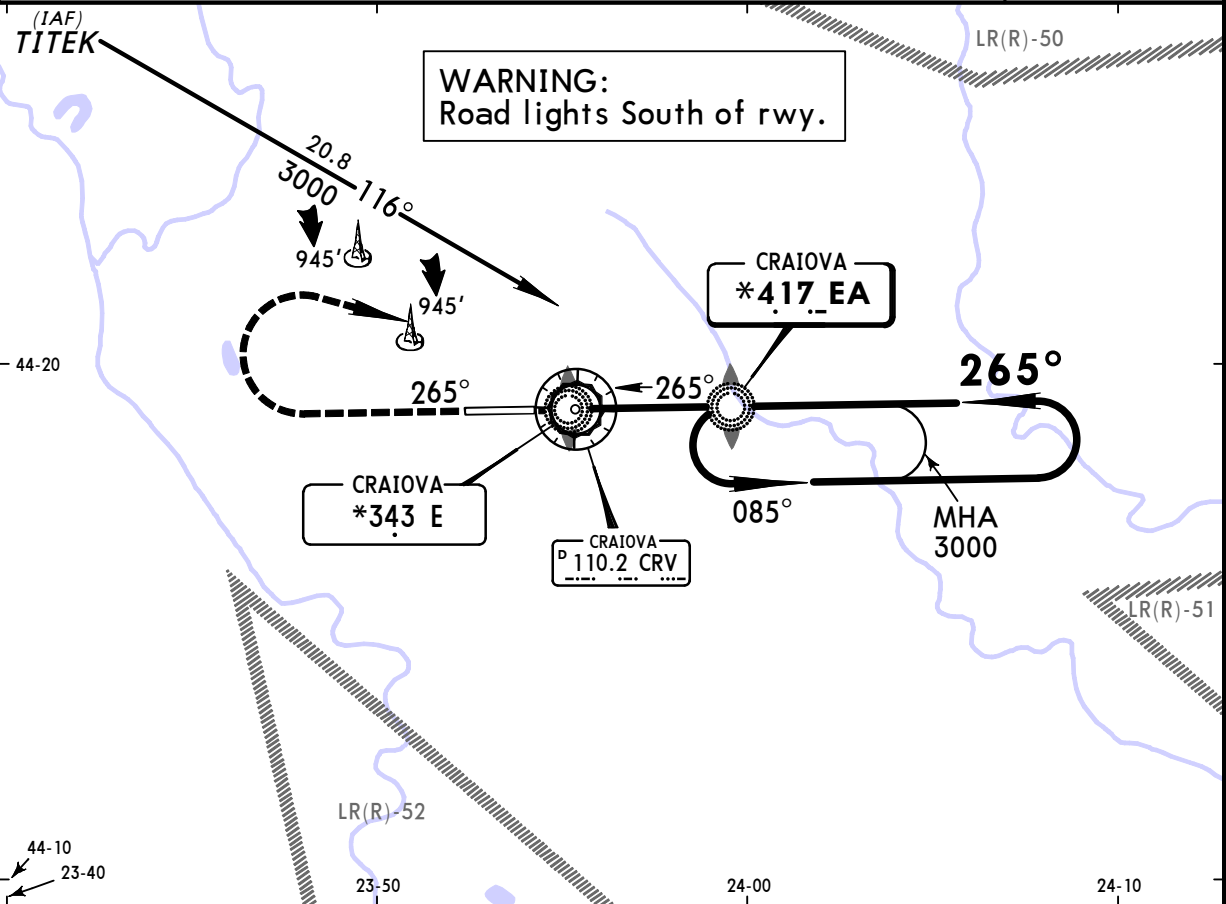
NDB EA <b>*417</b>	Final Apch Crs <b>265°</b>	Minimum Alt LOM <b>1820'</b> (1206')	MDA(H) <b>970'</b> (356')	Apt Elev <b>626'</b> RWY <b>614'</b>
--------------------------	----------------------------------	--	------------------------------	---



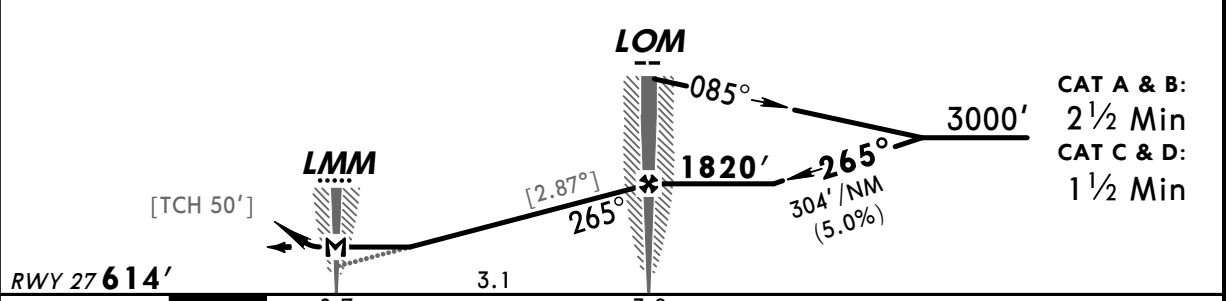
**MISSED APCH:** Climb STRAIGHT AHEAD to 2000', then turn RIGHT to EA NDB climbing to 3000' and hold.

Alt Set: hPa/MB (MM on req) Rwy Elev: 22 hPa Trans level: By ATC Trans alt: 3000'

MSA EA NDB

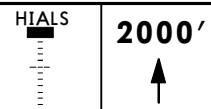


**WARNING:**  
Road lights South of rwy.



CAT A & B:  
2 1/2 Min  
CAT C & D:  
1 1/2 Min

Gnd speed-Kts	70	90	100	120	140	160
Descent gradient	5.00% or [2.87°]					
Descent angle	355	457	508	609	711	812
MAP at LMM or LOM to MAP	3.1	2:39	2:04	1:52	1:33	1:20



JAR-OPS STRAIGHT-IN LANDING RWY 27			CIRCLE-TO-LAND		
MDA(H) 970' (356')			MDA(H) VIS		
		ALS out	Max Kts		
A	RVR 900m	RVR 1500m	100	1040' (414')	1500m
B	RVR 1000m	RVR 1800m	135	1130' (504')	1600m
C	RVR 1400m	RVR 2000m	180	1340' (714')	2400m
D	RVR 1400m	RVR 2000m	205	1340' (714')	3600m

NOT FOR OPERATIONAL USE

PANS OPS 4