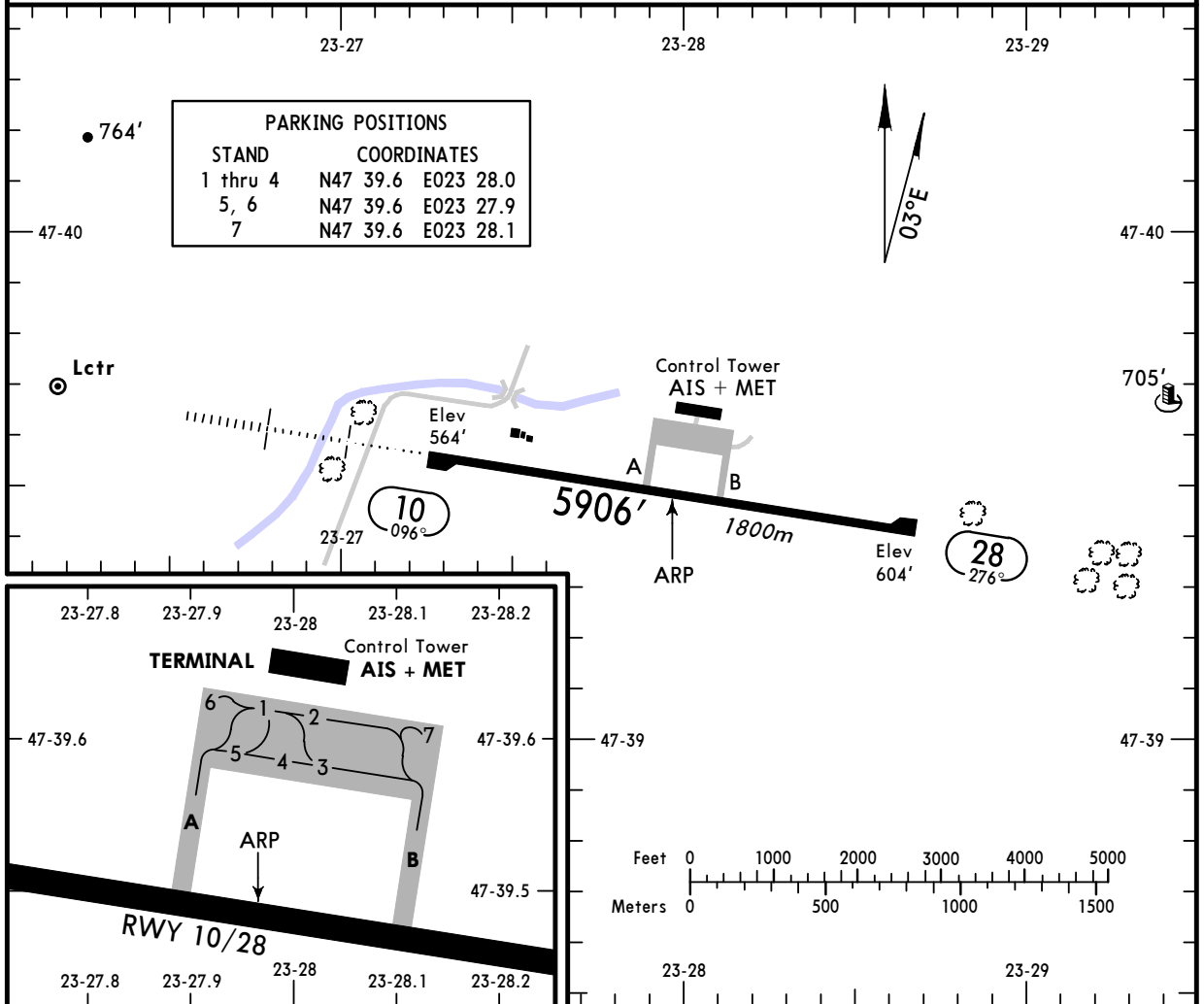


\*BAIA MARE Tower

118.1



ADDITIONAL RUNWAY INFORMATION

RWY		USABLE LENGTHS			WIDTH
		Threshold	Landing Beyond Glide Slope	TAKE-OFF	
10	RL ALS (orange)				98'
28	RL				30m

JAR-OPS

TAKE-OFF 1

	All Rwy's		
	LVP must be in Force		
	RCLM (DAY only) or RL	RCLM (DAY only) or RL	NIL (DAY only)
A			
B	250m	400m	500m
C			
D	300m		

1 Operators applying U.S. Ops Specs: CL required below 300m.

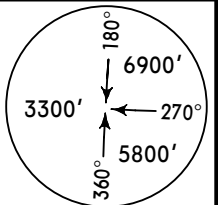
NOT FOR OPERATIONAL USE

BRIEFING STRIP™

\*BAIA MARE Tower

118.1

<b>NDB BMR</b> <b>404</b>	<b>Final Apch Crs</b> <b>096°</b>	<b>Minimum Alt LOM</b> <b>1740' (1176')</b>	<b>MDA(H)</b> <b>1300' (736')</b>	<b>Apt Elev 604'</b> <b>RWY 564'</b>
------------------------------	--------------------------------------	--	--------------------------------------	---

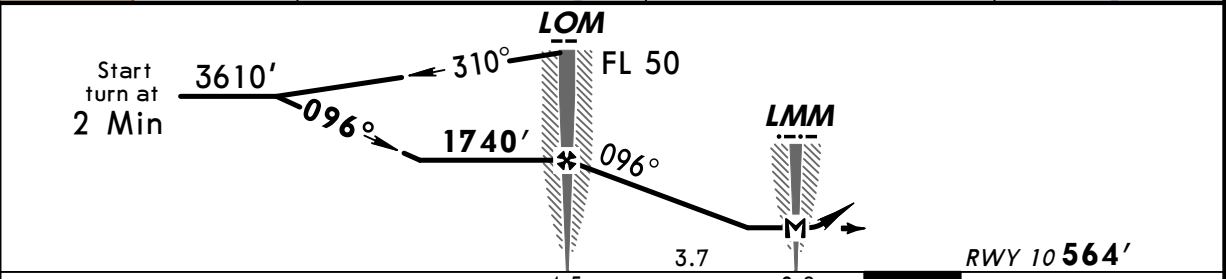
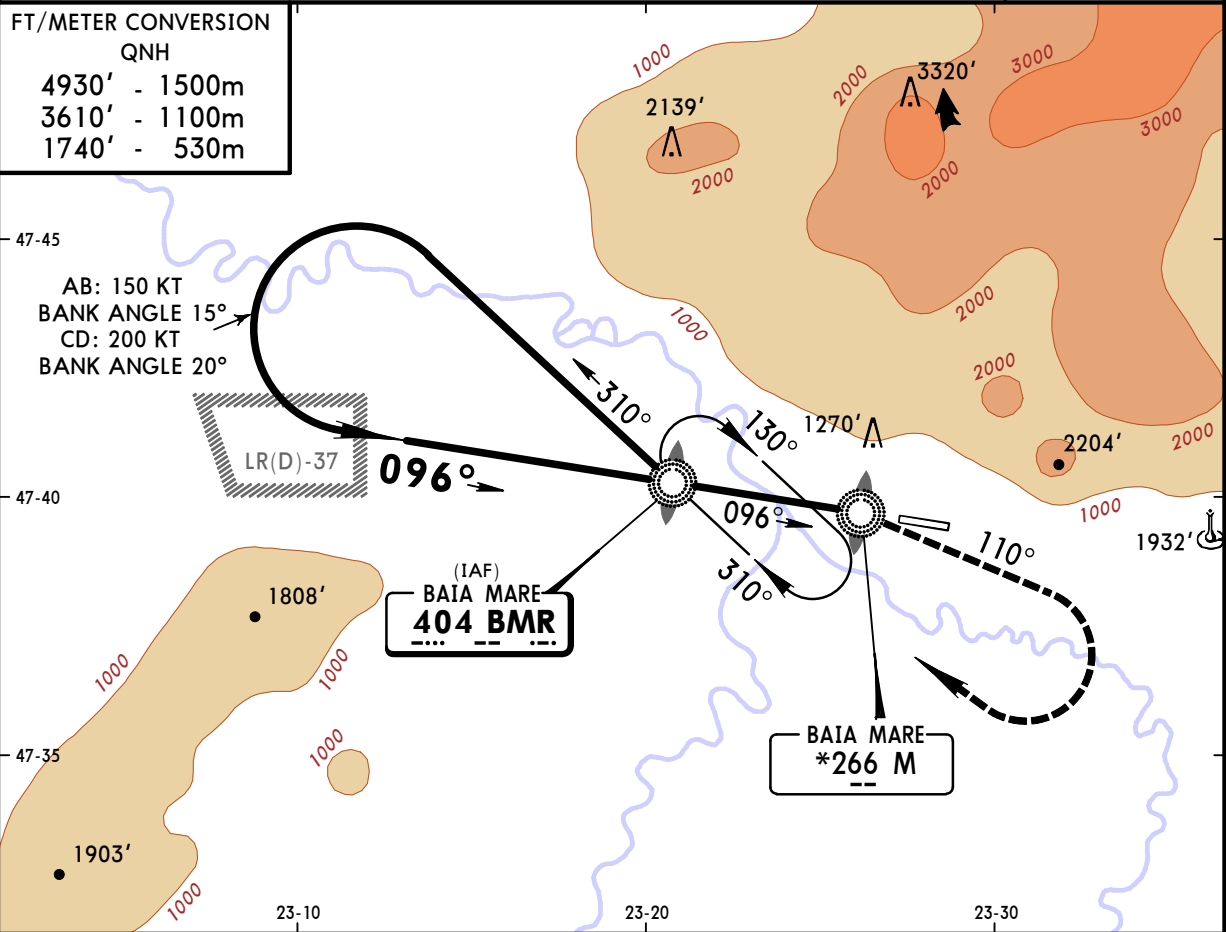


**MISSED APCH:** Not later than over M Lctr start climbing on 110° for 1 Min, then turn RIGHT to BMR NDB climbing to reach 3610' at BMR NDB.

Alt Set: hPa (MM on req) Rwy Elev: 20 hPa Trans level: By ATC Trans alt: 4930' **MSA BMR NDB**

**FT/METER CONVERSION QNH**

4930'	-	1500m
3610'	-	1100m
1740'	-	530m



<b>Gnd speed-Kts</b>	70	90	100	120	140	160	ALS 1 Min on 110°	
<b>Descent Gradient</b>	4.1%	291	374	415	498	581		664
<b>MAP at LMM</b>								

JAR-OPS STRAIGHT-IN LANDING RWY 10			CIRCLE-TO-LAND		
MDA(H) 1300' (736')			Max Kts	MDA(H)	VIS
A	RVR 1500m		100	1630' (1026')	1500m
B	RVR 1500m		135	2380' (1776')	1600m
C	RVR 2000m		180	2480' (1876')	2400m
D	RVR 2000m		205	2690' (2086')	3600m

NOT FOR OPERATIONAL USE

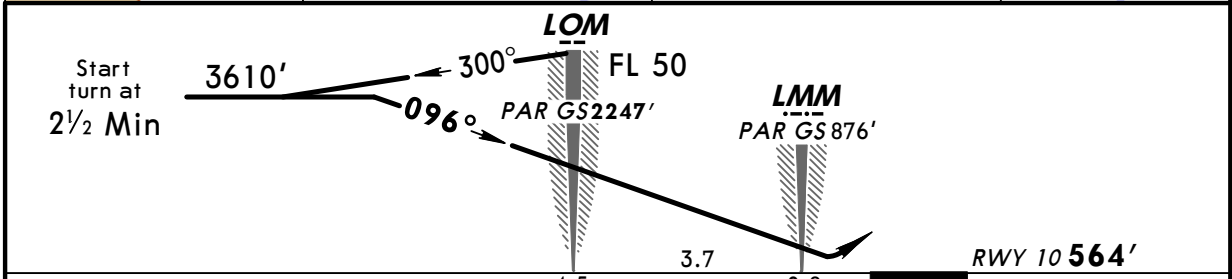
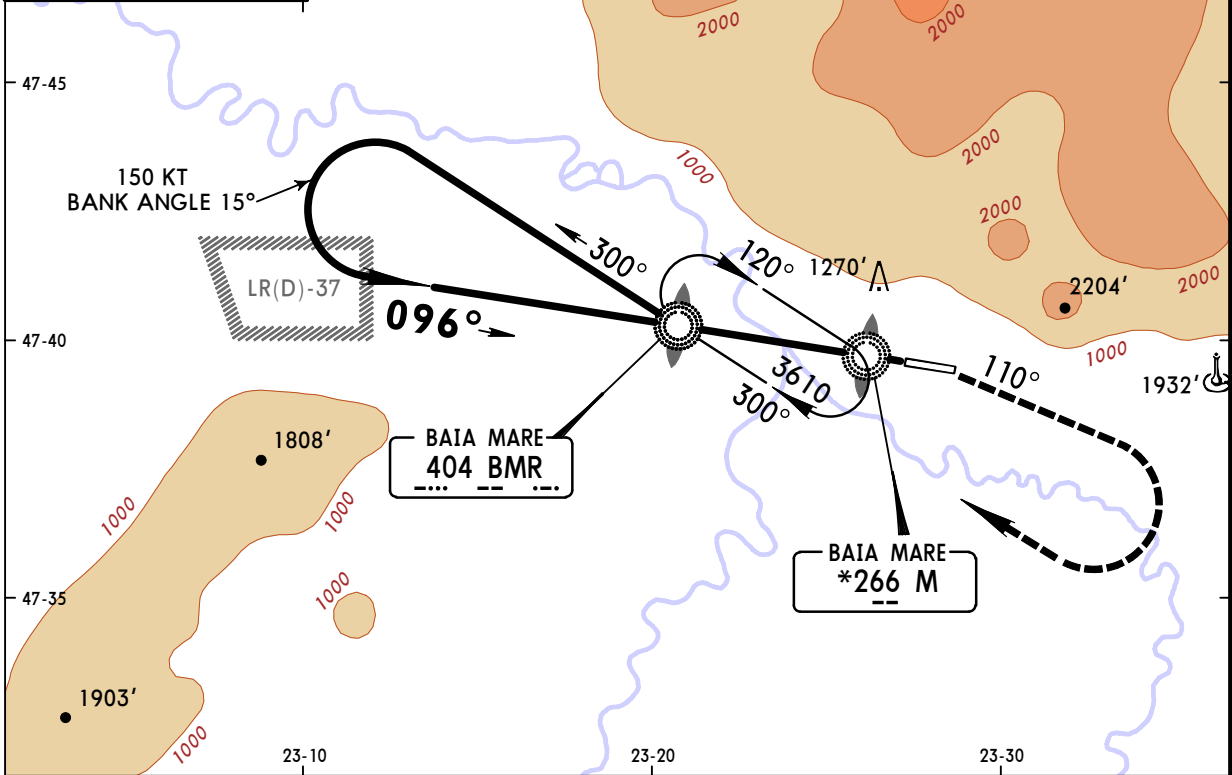
PANS OPS 4

BRIEFING STRIP

*BAIA MARE Precision (PAR) <b>118.85</b>				*BAIA MARE Tower <b>118.1</b>	
RADAR	Final Apch Crs <b>096°</b>	PAR GS LOM <b>2247'</b> (1683')	PAR DA(H) <b>778'</b> (214')	Apt Elev <b>604'</b>	RWY <b>564'</b>
MISSED APCH: Climb on rwy heading to 960', then turn RIGHT onto 110° for 1 Min, then climbing turn RIGHT to reach 3610' at BMR NDB.					
AltSet: hPa (MM on req)		Rwy Elev: 20 hPa	Trans level: By ATC	Trans alt: 4930'	MSA <b>BMR NDB</b>

FT/METER CONVERSION  
QNH

4930'	-	1500m
3610'	-	1100m
960'	-	295m



Gnd speed-Kts	70	90	100	120	140	160	ALS	960' on hdg	RWY
PAR GS 3.50°	439	564	627	752	877	1003			

JAR-OPS		STRAIGHT-IN LANDING RWY 10		CIRCLE-TO-LAND	
		Missed apch climb gradient mim 3.0% <b>1</b>			
		DA(H) <b>778'</b> (214')			
		ALS out		Max Kts	MDA(H) VIS
A				100	1630' (1026') 1500m
B	RVR 800m		RVR 1000m	135	2380' (1776') 1600m
C				180	2480' (1876') 2400m
D	NOT APPLICABLE			D	NOT APPLICABLE

**1** Climb gradient up to 960'.  
CHANGES: MSA. © JEPPESEN SANDERSON, INC., 2002, 2006. ALL RIGHTS RESERVED.

NOT FOR OPERATIONAL USE

PANS OPS 4