

ADDITIONAL RUNWAY INFORMATION

RWY	HIRL	HIALS	PAPI (angle 3.0°)	USABLE LENGTHS		TAKE-OFF	WIDTH
				Threshold	Glide Slope		
16 34					7230' 2204m		148' 45m

JAR-OPS

TAKE-OFF 1

	All Rwys		
	LVP must be in Force	RCLM (DAY only) or RL	NIL (DAY only)
A			
B	250m	400m	500m
C			
D	300m		

1 Operators applying U.S. Ops Specs: CL required below 300m.

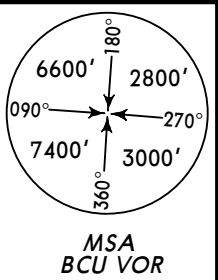
NOISE ABATEMENT PROCEDURE

RWY 16: According to ICAO procedure A or B.  
RWY 34: According to ICAO procedure A.

NOT FOR OPERATIONAL USE

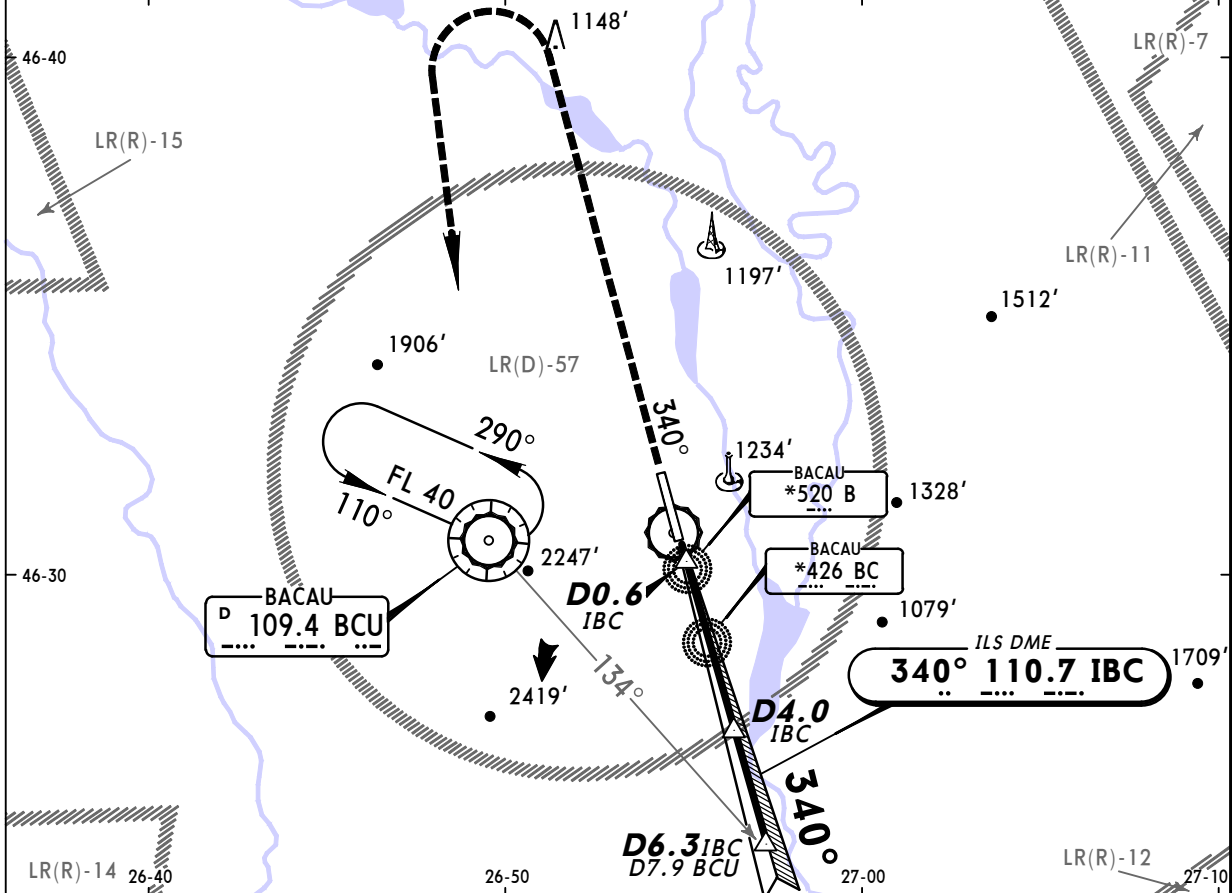
BRIEFING STRIP™

*BACAU Tower (APP/TWR)				
118.6				
LOC IBC <b>110.7</b>	Final Apch Crs <b>340°</b>	GS <b>D4.0 IBC</b> 1865' (1274')	ILS DA(H) <b>791' (200')</b>	Apt Elev <b>607'</b> RWY <b>591'</b>

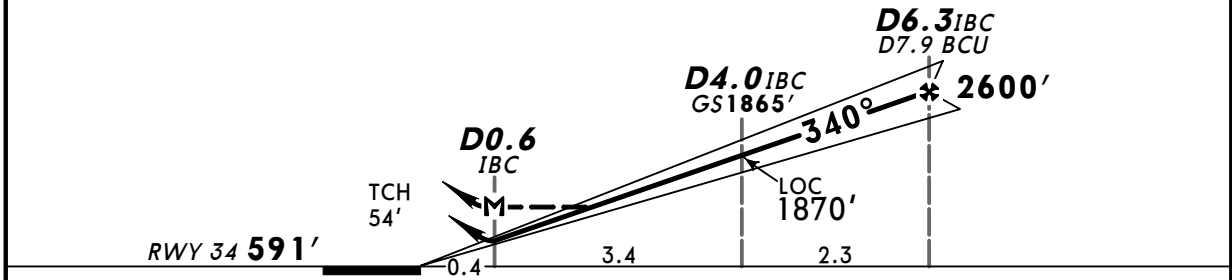


**MISSED APCH:** Climb STRAIGHT AHEAD on Rwy track to 3400', then turn LEFT to VOR climbing to FL 40 and hold, or as directed.

Alt Set: hPa (MM on req)      Rwy Elev: 21 hPa      Trans level: By ATC      Trans alt: 3000'



LOC (GS out)	IBC DME	1.0	2.0	3.0	4.0	5.0
	ALTITUDE	910'	1230'	1550'	1870'	2190'



Gnd speed-Kts	70	90	100	120	140	160	PAPI HIALS	3400' on track	FL 40 BCU to 109.4
ILS GS 3.00° or LOC Desc Grad 5.2%	377	484	538	646	753	861			
MAP at D0.6 IBC									

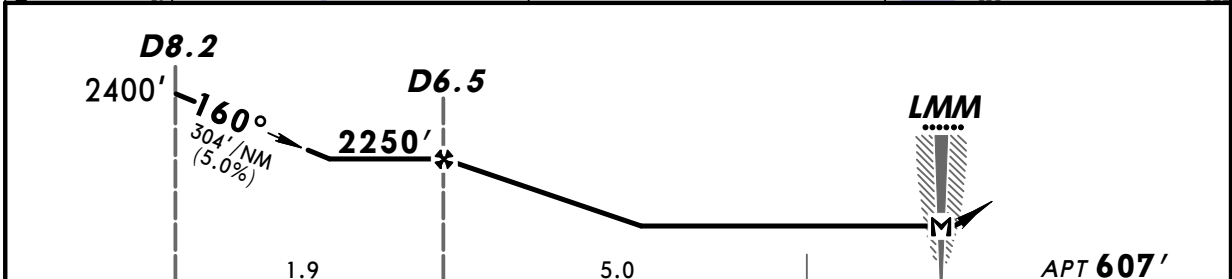
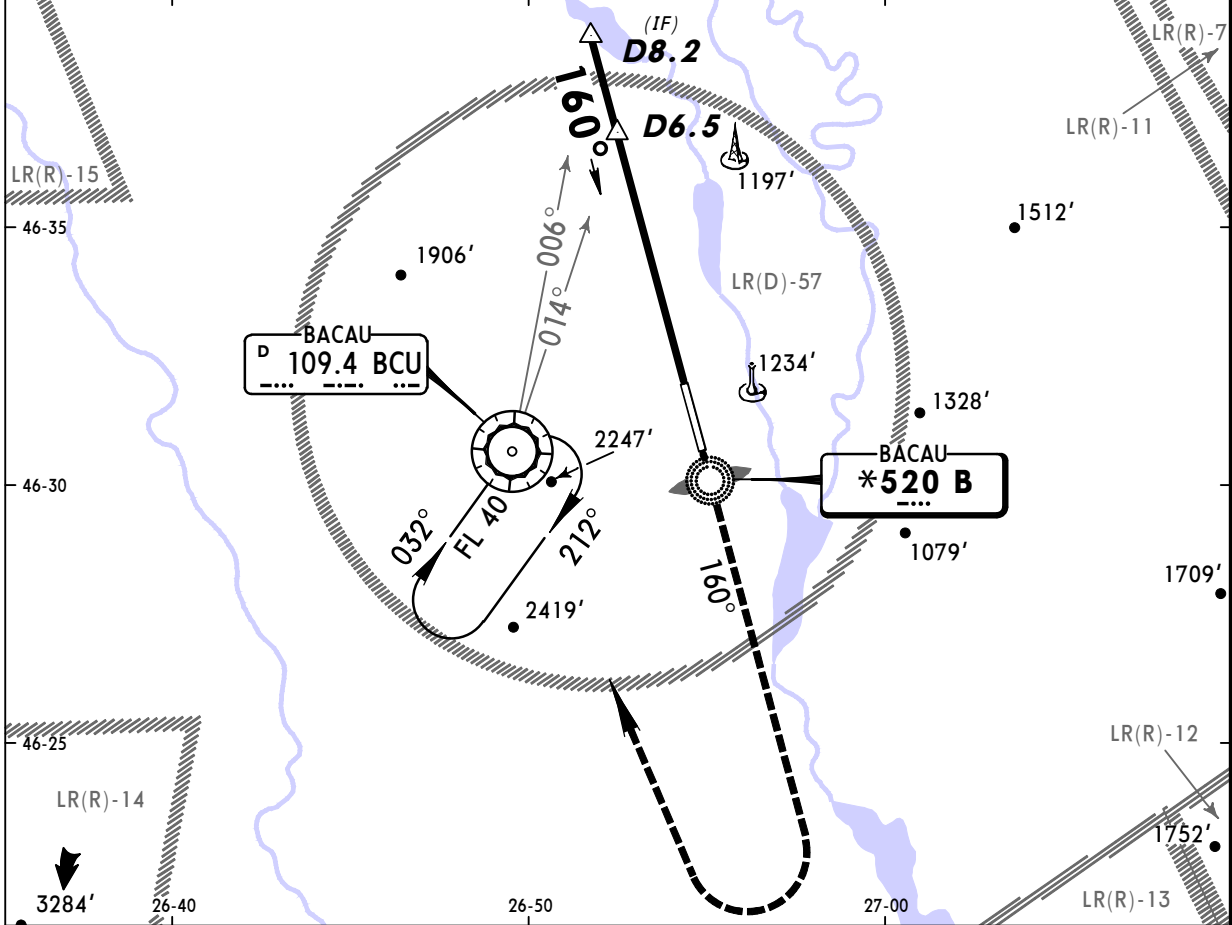
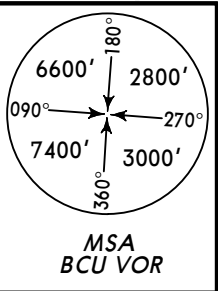
JAR-OPS STRAIGHT-IN LANDING RWY 34				CIRCLE-TO-LAND		
ILS		LOC (GS out)		Max Kts	MDA(H)	VIS
DA(H) 791' (200')		MDA(H) 920' (329')				
FULL	ALS out	ALS out	ALS out			
A		RVR 900m	RVR 1500m	100	1630' (1023')	1500m
B		RVR 1000m	RVR 1800m	135	1630' (1023')	1600m
C	RVR 550m	RVR 1000m	RVR 2000m	180	2640' (2033')	2400m
D		RVR 1400m		205	2820' (2213')	3600m

NOT FOR OPERATIONAL USE

PANS OPS 4

BRIEFING STRIP™

*BACAU Tower (APP/TWR)				
118.6				
NDB B <b>*520</b>	Final Apch Crs <b>160°</b>	Minimum Alt <b>D6.5</b> 2250' (1643')	MDA(H) <b>1360' (753')</b>	Apt Elev <b>607'</b>
<p><b>MISSED APCH: Climb STRAIGHT AHEAD on Rwy track to 3400', then turn RIGHT to VOR climbing to FL 40 and hold, or as directed.</b></p>				
Alt Set: hPa (MM on req)		Apt Elev: 22 hPa		Trans level: By ATC



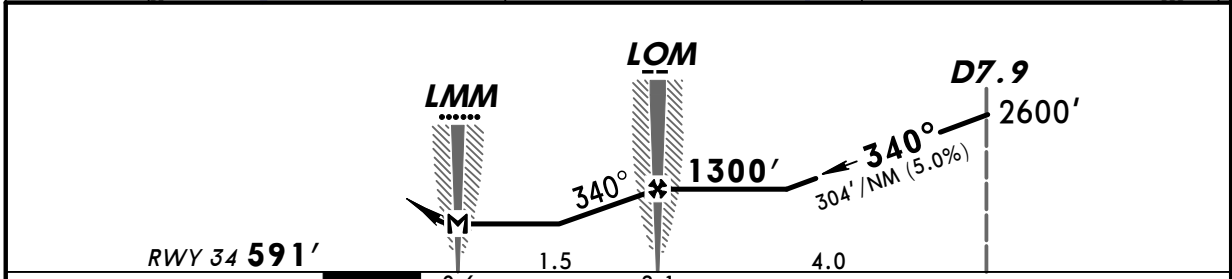
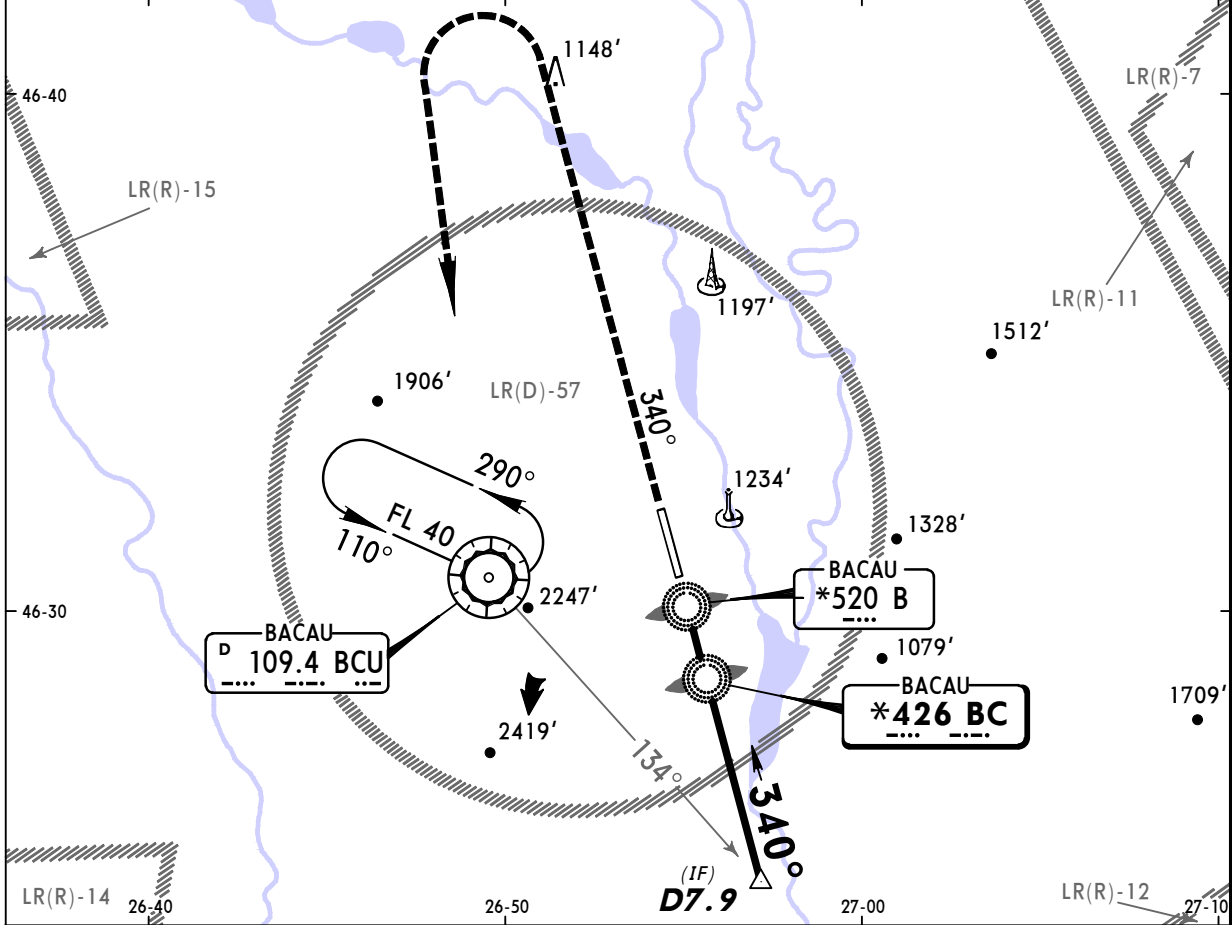
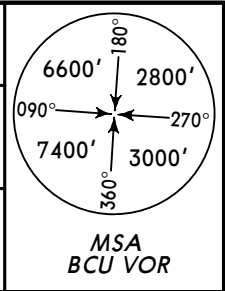
Gnd speed-Kts	70	90	100	120	140	160	PAPI HIALS	3400' ↑ on track	Rwy RT	FL 40 to BCU 109.4
Descent Gradient 5.2%	369	474	527	632	737	843				
MAP at LMM										

JAR-OPS STRAIGHT-IN LANDING RWY 16			CIRCLE-TO-LAND		
MDA(H) <b>1360' (753')</b>					
		ALS out	Max Kts	MDA(H)	VIS
A	RVR 1200m	RVR 1500m	100	1630' (1023')	1500m
B	RVR 1400m		135	1630' (1023')	1600m
C	RVR 1800m	RVR 2000m	180	2640' (2033')	2400m
D	RVR 1800m		205	2820' (2213')	3600m

NOT FOR OPERATIONAL USE

BRIEFING STRIP™

*BACAU Tower (APP/TWR)				
118.6				
NDB BC *426	Final Apch Crs 340°	Minimum Alt LOM 1300' (709')	MDA(H) 1200' (609')	Apt Elev 607' RWY 591'
MISSED APCH: Climb STRAIGHT AHEAD on Rwy track to 3400', then turn LEFT to VOR climbing to FL 40 and hold, or as directed.				
Alt Set: hPa (MM on req)		Rwy Elev: 21 hPa		Trans level: By ATC



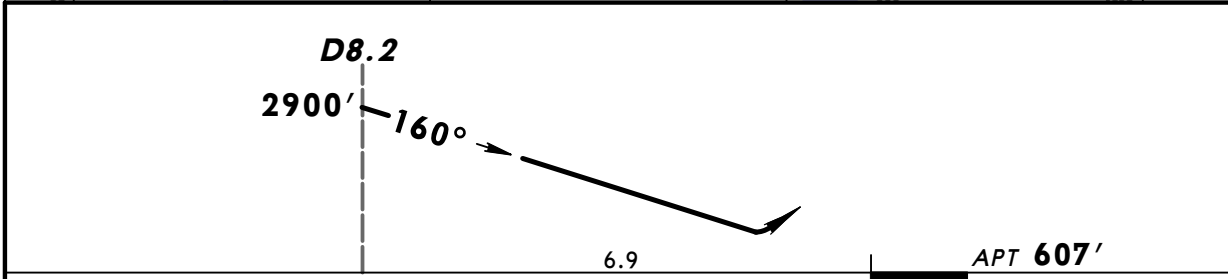
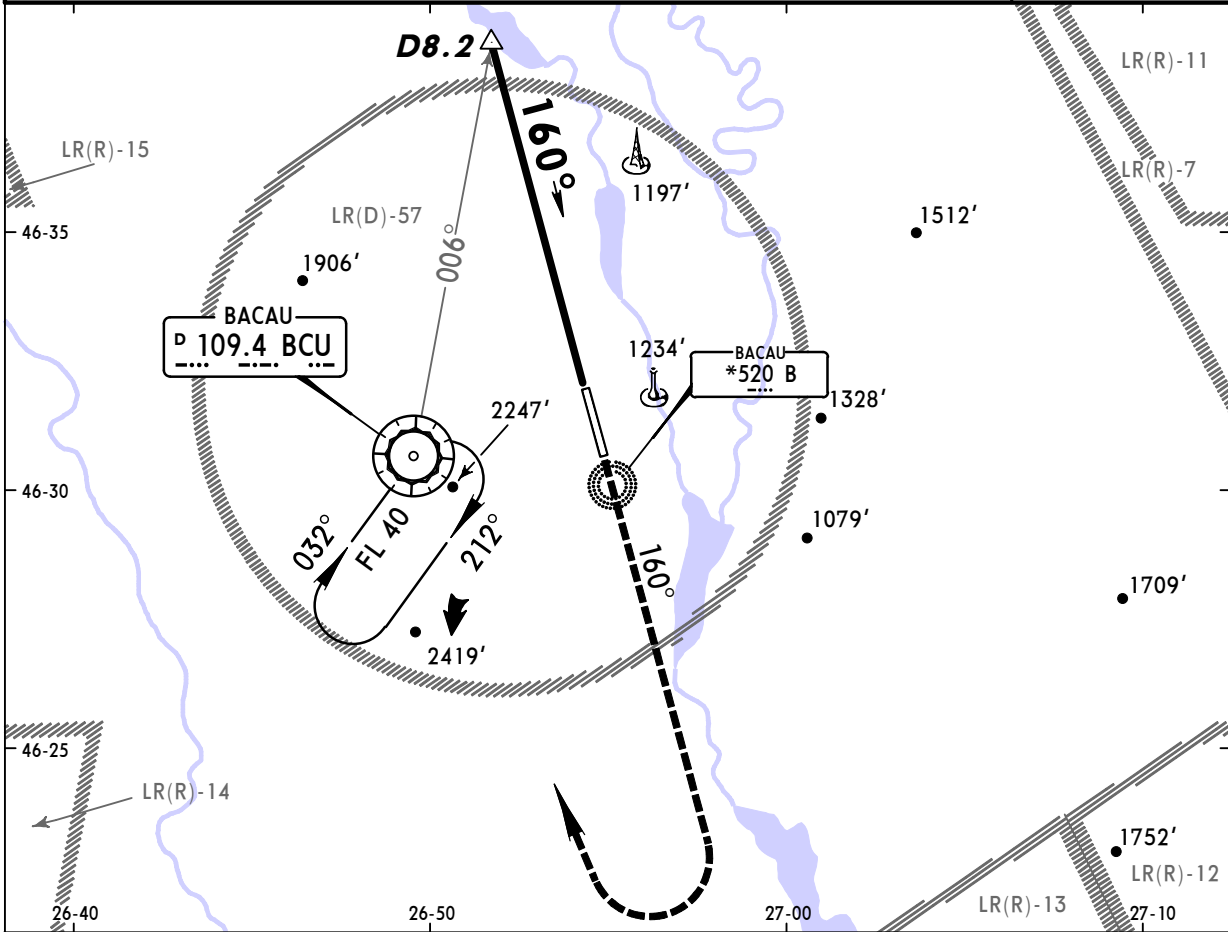
Gnd speed-Kts	70	90	100	120	140	160	PAPI HIALS	3400' on track	FL 40 to BCU	BCU 109.4
Descent Gradient 5.2%	369	474	527	632	737	843				
MAP at LMM										

JAR-OPS STRAIGHT-IN LANDING RWY 34			CIRCLE-TO-LAND		
MDA(H) 1200' (609')					
		ALS out	Max Kts	MDA(H)	VIS
A	RVR 1000m	RVR 1500m	100	1630' (1023')	1500m
B	RVR 1200m		135	1630' (1023')	1600m
C	RVR 1600m	RVR 2000m	180	2640' (2033')	2400m
D	RVR 1600m		205	2820' (2213')	3600m

NOT FOR OPERATIONAL USE

BRIEFING STRIP™

*BACAU Precision			*BACAU Tower (APP/TWR)		
133.7			118.6		
RADAR	Final Apch Crs <b>160°</b>	PAR GS <b>D8.2</b> 2900' (2293')	PAR DA(H) <b>807' (200')</b>	Apt Elev <b>607'</b>	
<b>MISSED APCH: Climb STRAIGHT AHEAD on Rwy track to 3400', then turn RIGHT to VOR climbing to FL 40 and hold, or as directed.</b>					
Alt Set: hPa (MM on req)			Apt Elev: 22 hPa	Trans level: By ATC	Trans alt: 3000'
					MSA BCU VOR



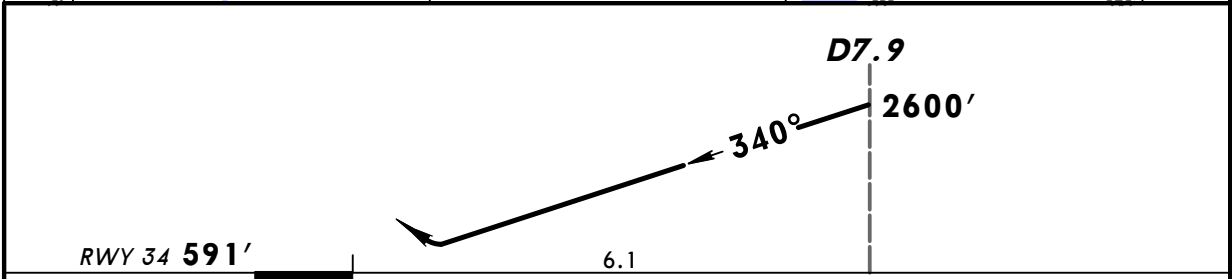
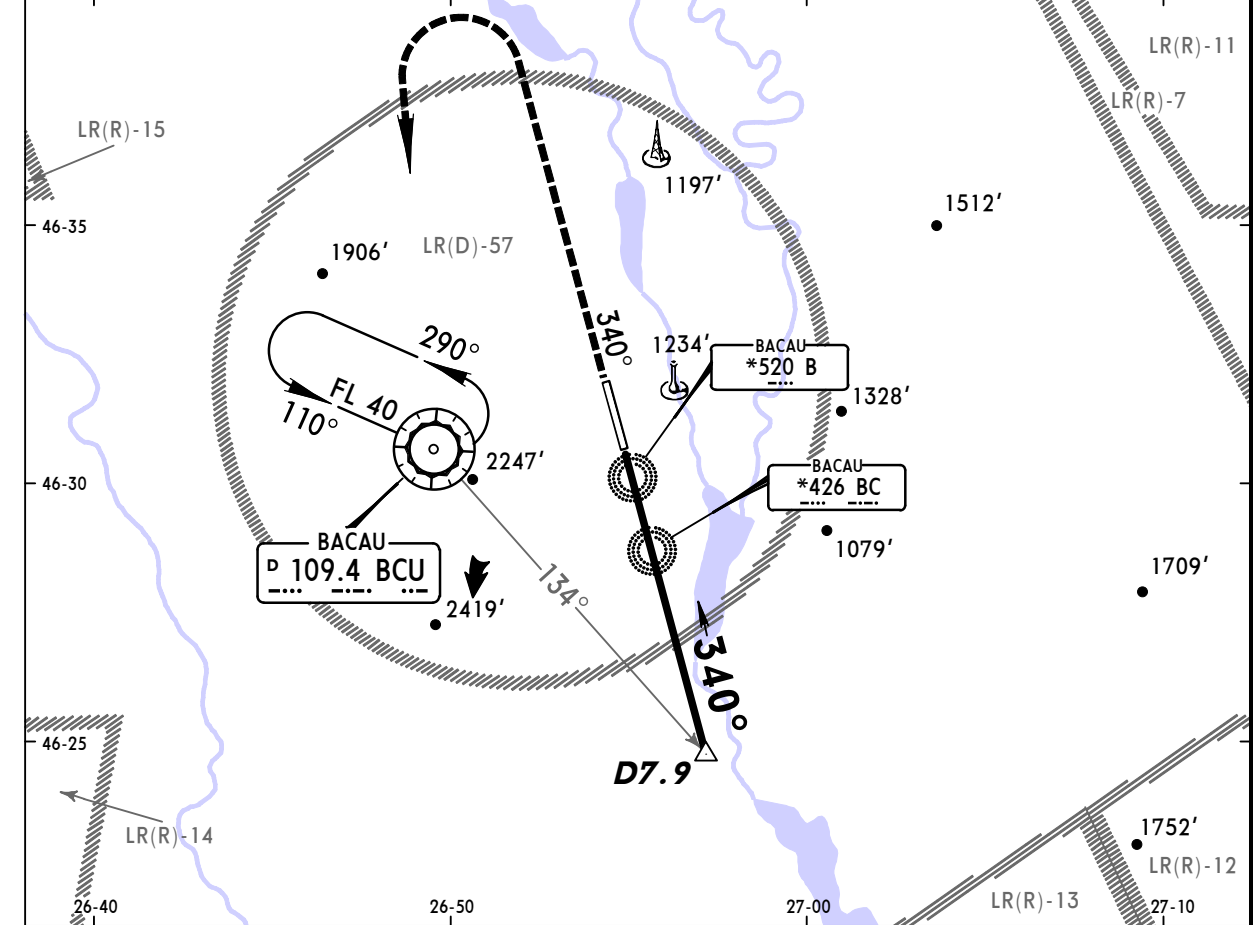
Gnd speed-Kts	70	90	100	120	140	160	PAPI HIALS	3400' ↑ on track	Rwy track	FL 40 RT to BCU 109.4
PAR GS 3.00°	377	484	538	646	753	861				

<b>JAR-OPS</b>				STRAIGHT-IN LANDING RWY 16		CIRCLE-TO-LAND		
DA(H) <b>807' (200')</b>				ALS out		Max Kts	MDA(H)	VIS
A	RVR 550m		RVR 1000m		100	1630' (1023')	1500m	
B					135	1630' (1023')	1600m	
C					180	2640' (2033')	2400m	
D					205	2820' (2213')	3600m	

NOT FOR OPERATIONAL USE

PANS OPS 4

*BACAU Precision <b>133.7</b>				*BACAU Tower (APP/TWR) <b>118.6</b>	
<b>RADAR</b>	<i>Final Apch Crs</i> <b>340°</b>	<i>PAR GS</i> <b>D7.9</b> <b>2600' (2009')</b>	<i>PAR DA(H)</i> <b>791' (200')</b>	<i>Apt Elev</i> <b>607'</b>	<i>RWY</i> <b>591'</b>
<b>MISSED APCH: Climb STRAIGHT AHEAD on Rwy track to 3400', then turn LEFT to VOR climbing to FL 40 and hold, or as directed.</b>					
Alt Set: hPa (MM on req)    Rwy Elev: 21 hPa    Trans level: By ATC    Trans alt: 3000'					<b>MSA BCU VOR</b>



<i>Gnd speed-Kts</i>	70	90	100	120	140	160	PAPI HIALS	3400' on track	FL 40 to BCU 109.4
<i>PAR GS</i>	3.00°	377	484	538	646	861			

JAR-OPS			STRAIGHT-IN LANDING RWY 34		CIRCLE-TO-LAND	
			<i>DA(H)</i> <b>791' (200')</b>			
			<i>ALS out</i>		<i>Max Kts</i>	<i>MDA(H)</i> <i>VIS</i>
A					100	<b>1630' (1023')</b> <b>1500m</b>
B					135	<b>1630' (1023')</b> <b>1600m</b>
C	RVR 550m			RVR 1000m	180	<b>2640' (2033')</b> <b>2400m</b>
D					205	<b>2820' (2213')</b> <b>3600m</b>

NOT FOR OPERATIONAL USE

PANS OPS 4