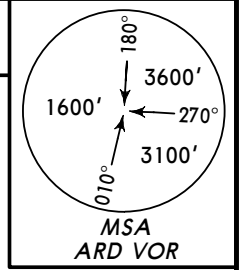
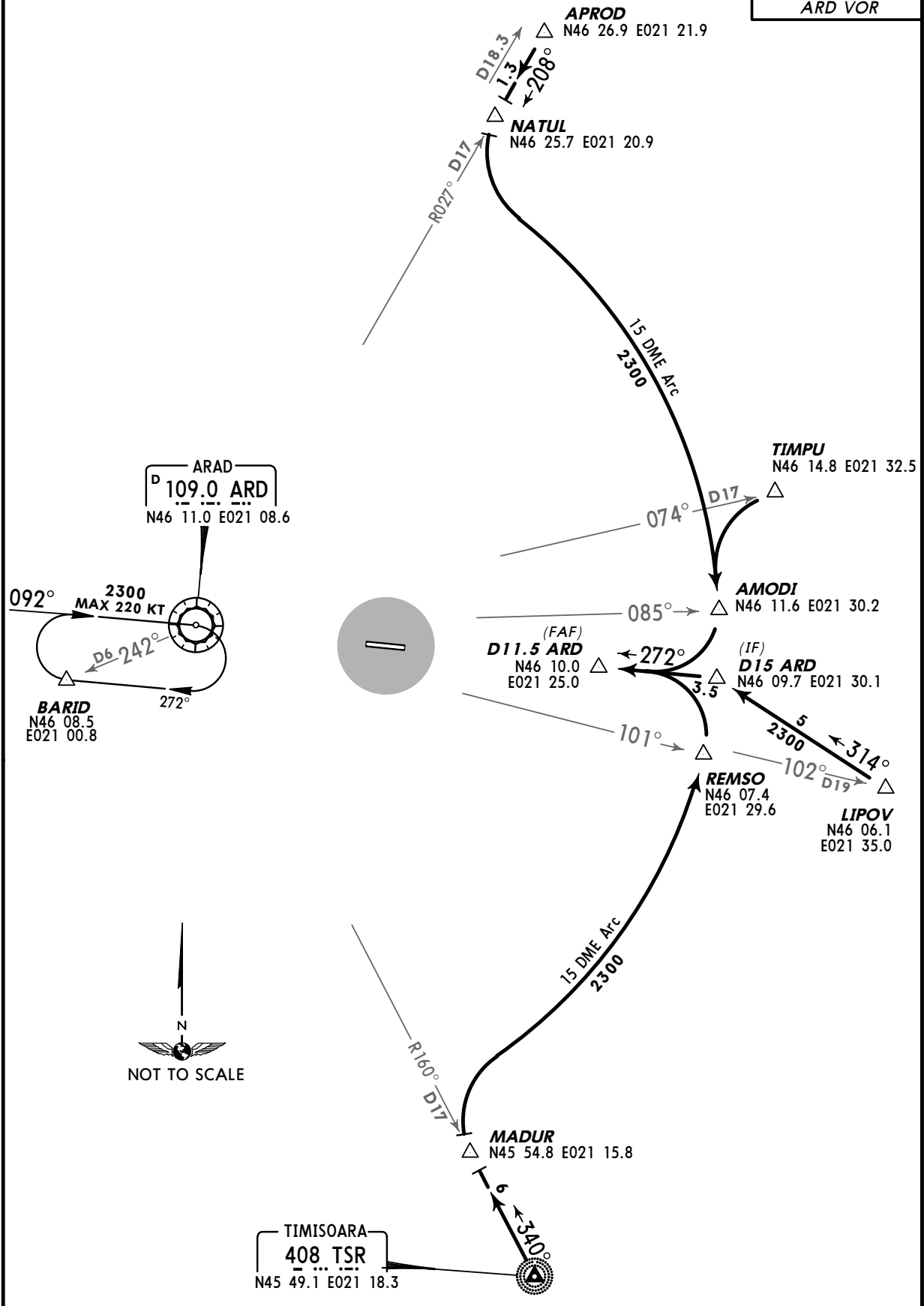


Apt Elev 352'
Alt Set: hPa (MM on request)
Trans level: By ATC Trans alt: 3000'

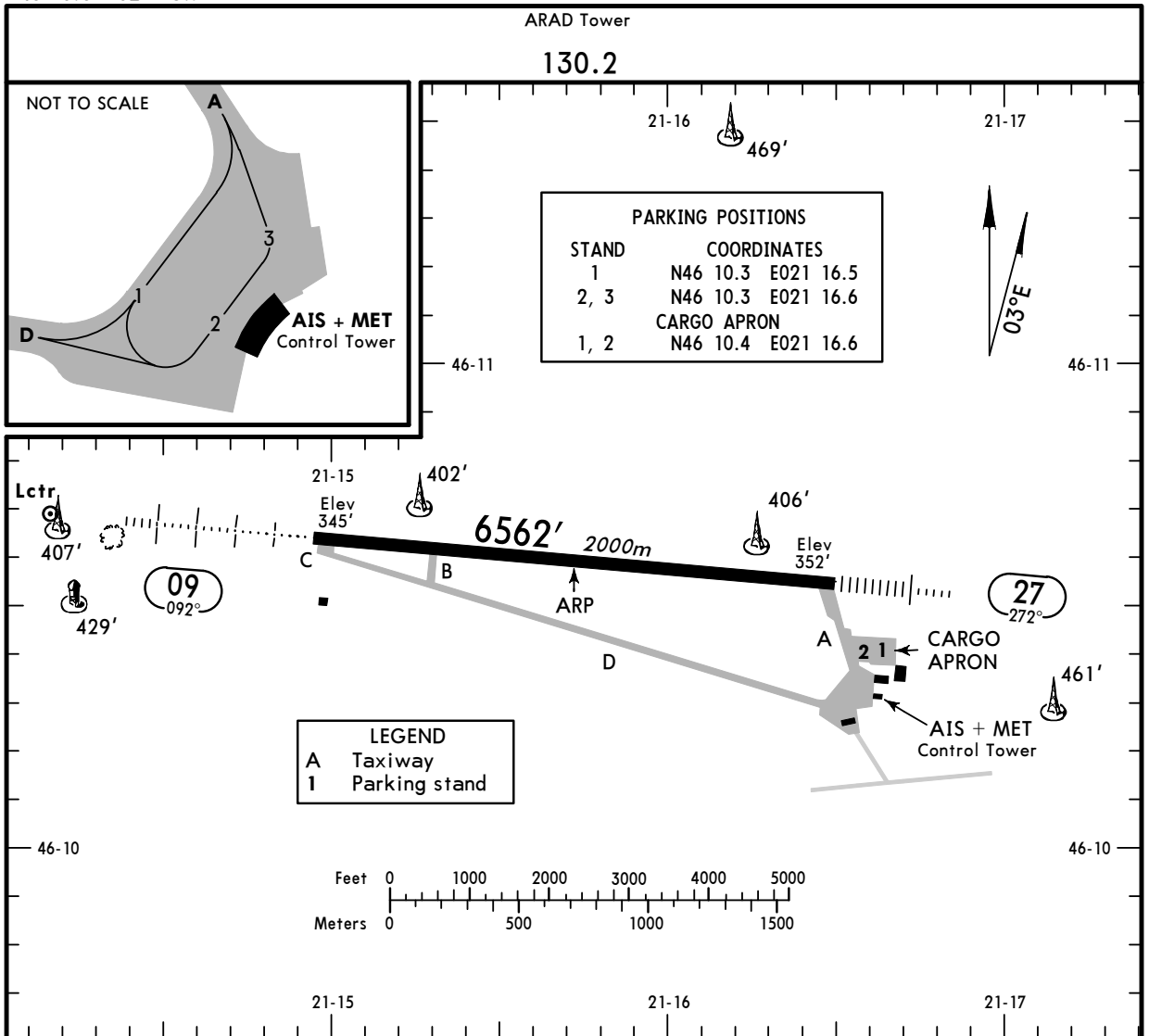


RWY 27 ARRIVAL PROCEDURES



NOT FOR OPERATIONAL USE





RWY	HIRL (60m) CL (30m) HIALS	USABLE LENGTHS		TAKE-OFF	WIDTH
		Threshold	Glide Slope		
09	HIRL (60m) CL (30m) HIALS		5332' 1625m		148'
27	HIRL (60m) CL (30m) HIALS-II TDZ PAPI-L (3.0°)		5568' 1697m		45m

JAR-OPS		TAKE-OFF 1	
All Rwy's			
LVP must be in Force			
RL & CL	RCLM (DAY only) or RL	RCLM (DAY only) or RL	NIL (DAY only)
A			
B	200m	400m	500m
C			
D	250m		

1 Operators applying U.S. Ops Specs: CL required below 300m.

NOT FOR OPERATIONAL USE

BRIEFING STRIP™

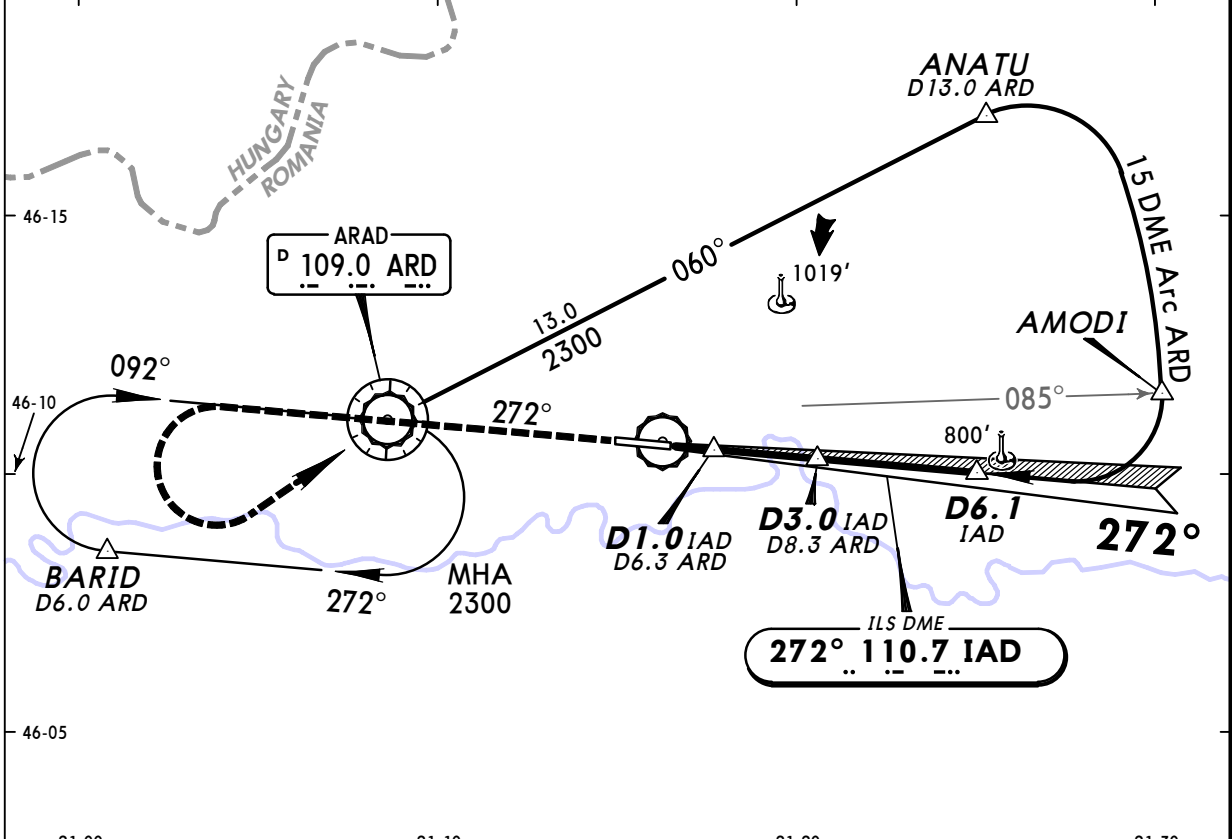
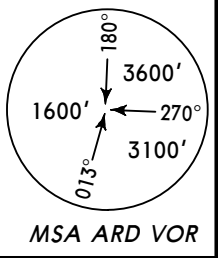
Approach Control through Tower
ARAD Tower
130.2

LOC IAD 110.7	Final Apch Crs 272°	GS D3.0 IAD 1255' (903')	ILS DA(H) 552' (200')	Apt Elev 352'
-------------------------	-------------------------------	--	---------------------------------	----------------------

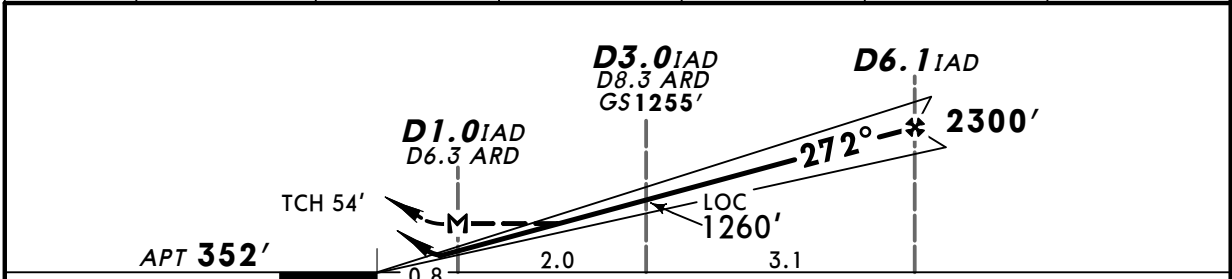
MISSED APCH: Climb STRAIGHT AHEAD to 2300', then turn LEFT and join holding.

Alt Set: hPa (MM on req) Apt Elev: 13 hPa Trans level: By ATC Trans alt: 3000'

1. Procedure restricted to MAX 210 KT. 2. ILS front course width 5.2°.



LOC (GS out)	IAD DME	1.0	2.0	3.0	4.0	5.0
	ALTITUDE	620'	940'	1260'	1580'	1900'



Gnd speed-Kts	70	90	100	120	140	160	HIALS-II PAPI 2300'
ILS GS 3.00° or	377	484	538	646	753	861	
LOC Descent Gradient 5.2%							

MAP at D1.0 IAD/D6.3 ARD

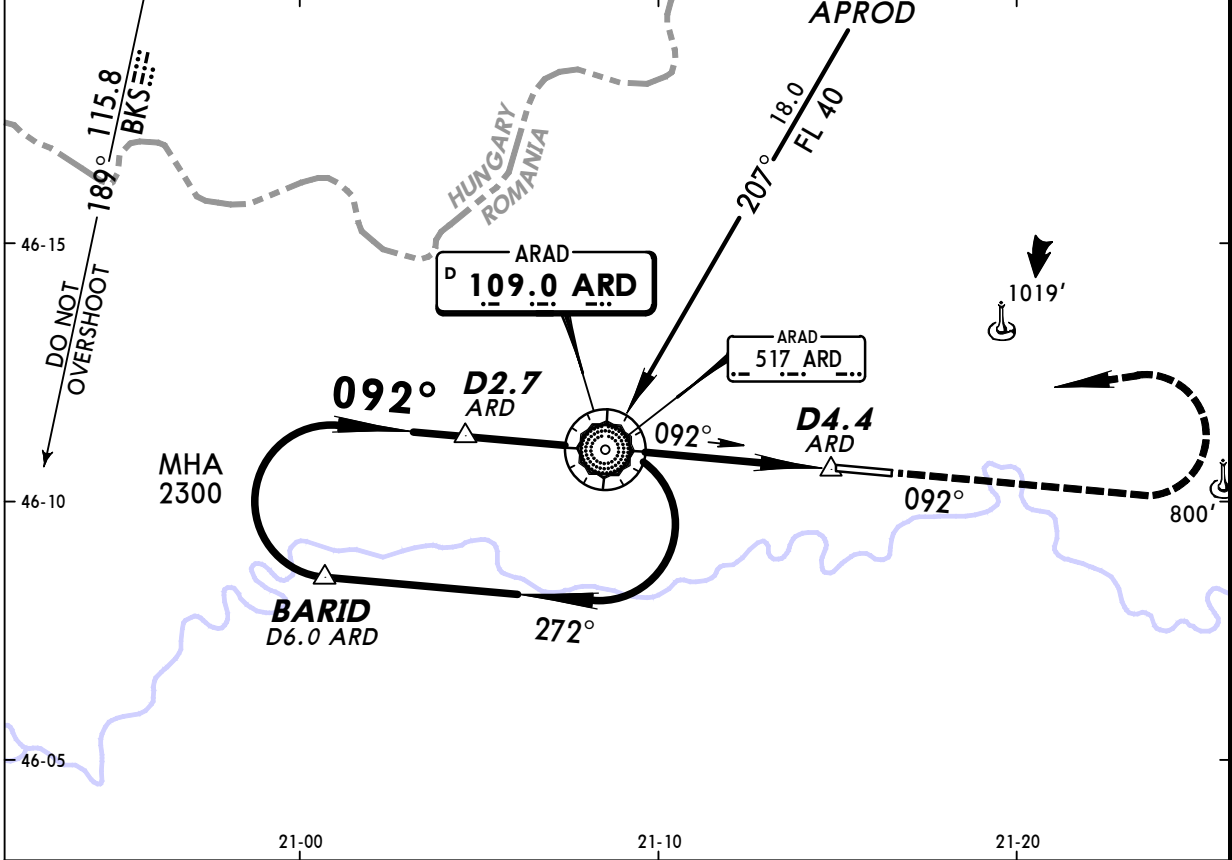
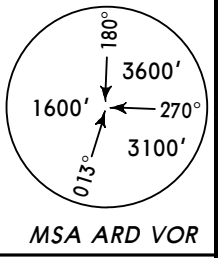
JAR-OPS				STRAIGHT-IN LANDING RWY 27		CIRCLE-TO-LAND	
ILS		LOC (GS out)					
DA(H) 552' (200')		MDA(H) 790' (438')					
FULL		ALS out		ALS out		Max Kts	
A	RVR 700m	RVR 1000m	RVR 1200m	RVR 1500m	100	870' (518')	1500m
B			RVR 1300m		135	870' (518')	1600m
C			RVR 1400m	RVR 1800m	180	1410' (1058')	2400m
D			RVR 1600m	RVR 2000m	205	1410' (1058')	3600m

NOT FOR OPERATIONAL USE

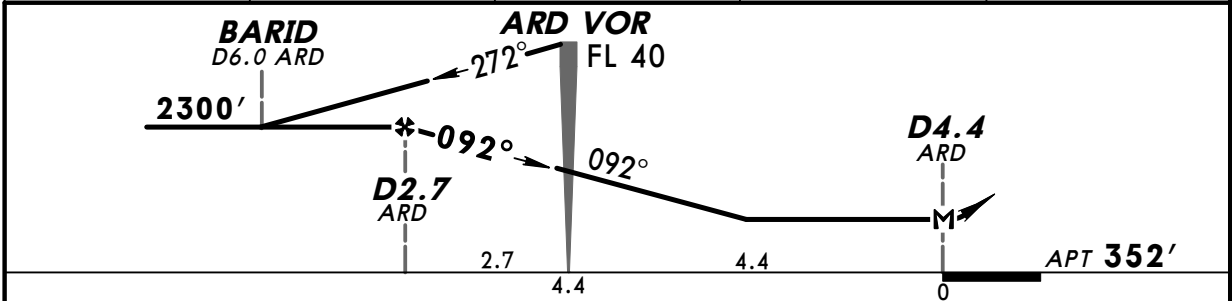
PANS OPS 4

BRIEFING STRIP™

Approach Control through Tower ARAD Tower 130.2				
VOR ARD 109.0	Final Apch Crs 092°	Minimum Alt D2.7 ARD 2300' (1948')	MDA(H) Refer to Minimums	Apt Elev 352'
MISSED APCH: Climb STRAIGHT AHEAD to 2300', then turn LEFT to ARD VOR and hold, or as directed.				
Alt Set: hPa (MM on req)		Apt Elev: 13 hPa	Trans level: By ATC	Trans alt: 3000'
Procedure restricted to MAX 210 KT.				



ARD DME	21-00	21-10	21-20
ALTITUDE	2.0 BEFORE ARD 2120'	1.0 BEFORE ARD 1850'	1.0 AFTER ARD 1320'
			2.0 AFTER ARD 1050'



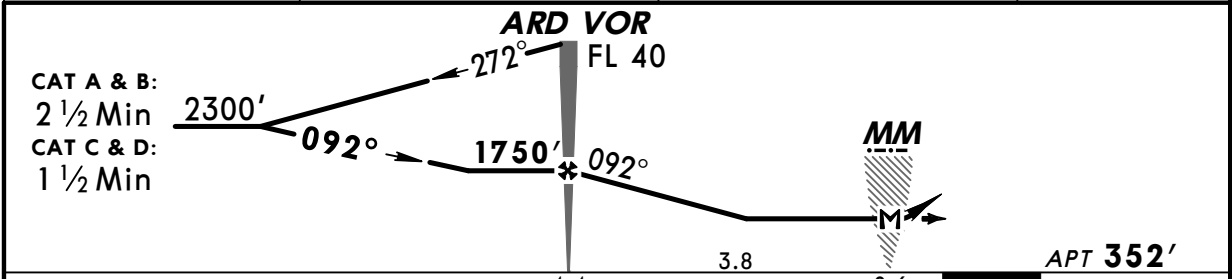
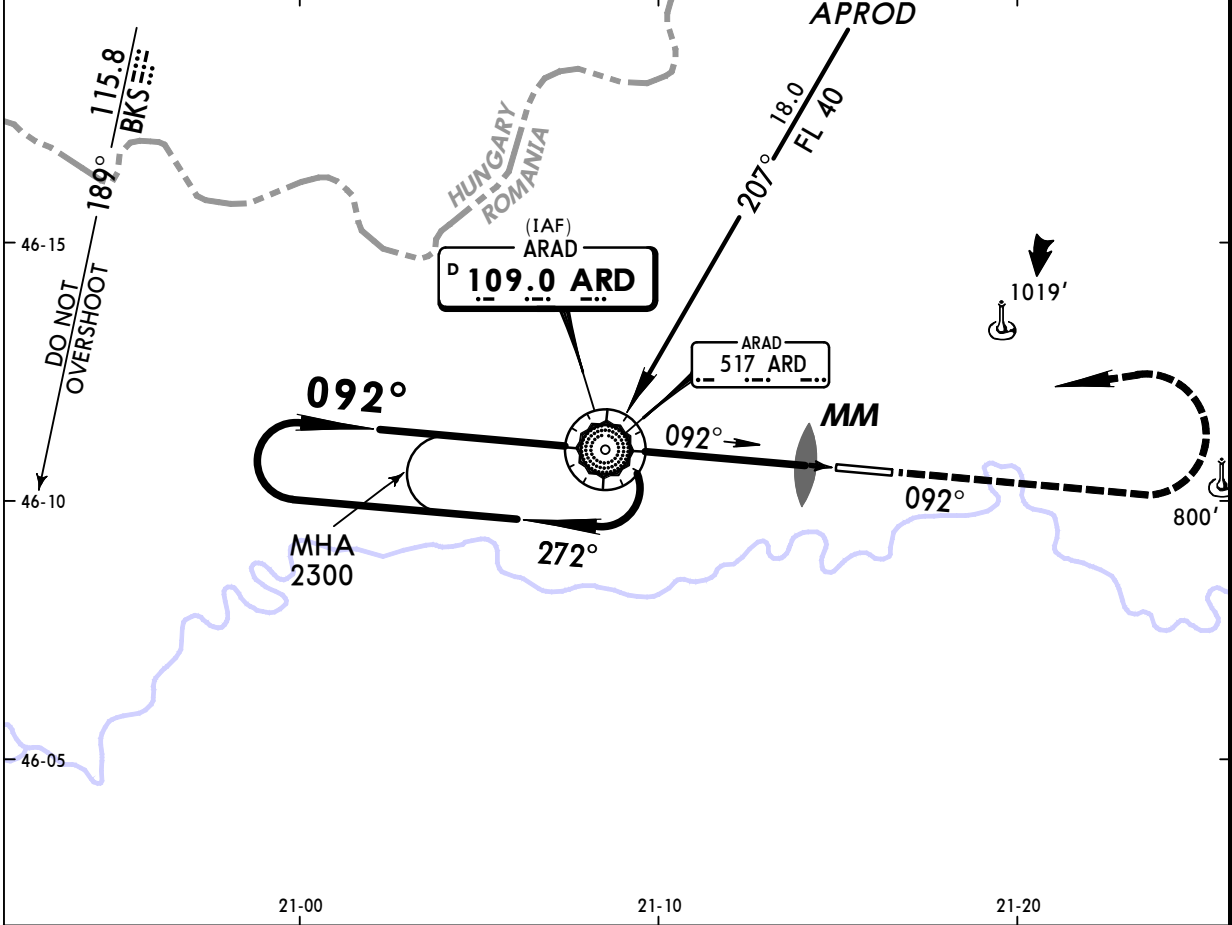
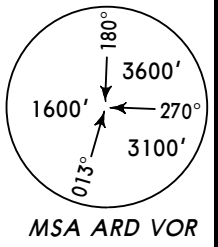
Gnd speed-Kts	70	90	100	120	140	160	HIALS 2300'
Descent Gradient 4.4%	312	401	446	535	624	713	
MAP at D4.4 after ARD VOR							

JAR-OPS		CIRCLE-TO-LAND		
		Max Kts	MDA(H)	VIS
		A 100	870' (518')	1500m
		B 135	870' (518')	1600m
		C 180	1410' (1058')	2400m
		D 205	1410' (1058')	3600m

NOT FOR OPERATIONAL USE
PANS OPS 4

BRIEFING STRIP™

Approach Control through Tower ARAD Tower 130.2				
VOR ARD 109.0	Final Apch Crs 092°	Minimum Alt ARD VOR 1750' (1398')	MDA(H) Refer to Minimums	Apt Elev 352'
MISSED APCH: Climb STRAIGHT AHEAD to 2300', then turn LEFT to ARD VOR and hold, or as directed.				
Alt Set: hPa (MM on req)		Apt Elev: 13 hPa	Trans level: By ATC	
Procedure restricted to MAX 210 KT.			Trans alt: 3000'	



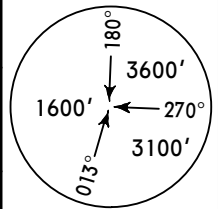
Gnd speed-Kts	70	90	100	120	140	160	HIALS 2300' ↑
Descent Gradient 5.0%	354	456	506	608	709	810	
MAP at MM							

JAR-OPS		CIRCLE-TO-LAND		
	Max Kts	MDA(H)	VIS	
	A 100	870' (518')	1500m	
	B 135	870' (518')	1600m	
	C 180	1410' (1058')	2400m	
	D 205	1410' (1058')	3600m	

NOT FOR OPERATIONAL USE
PANS OPS 4

BRIEFING STRIP

Approach Control through Tower
ARAD Tower
130.2

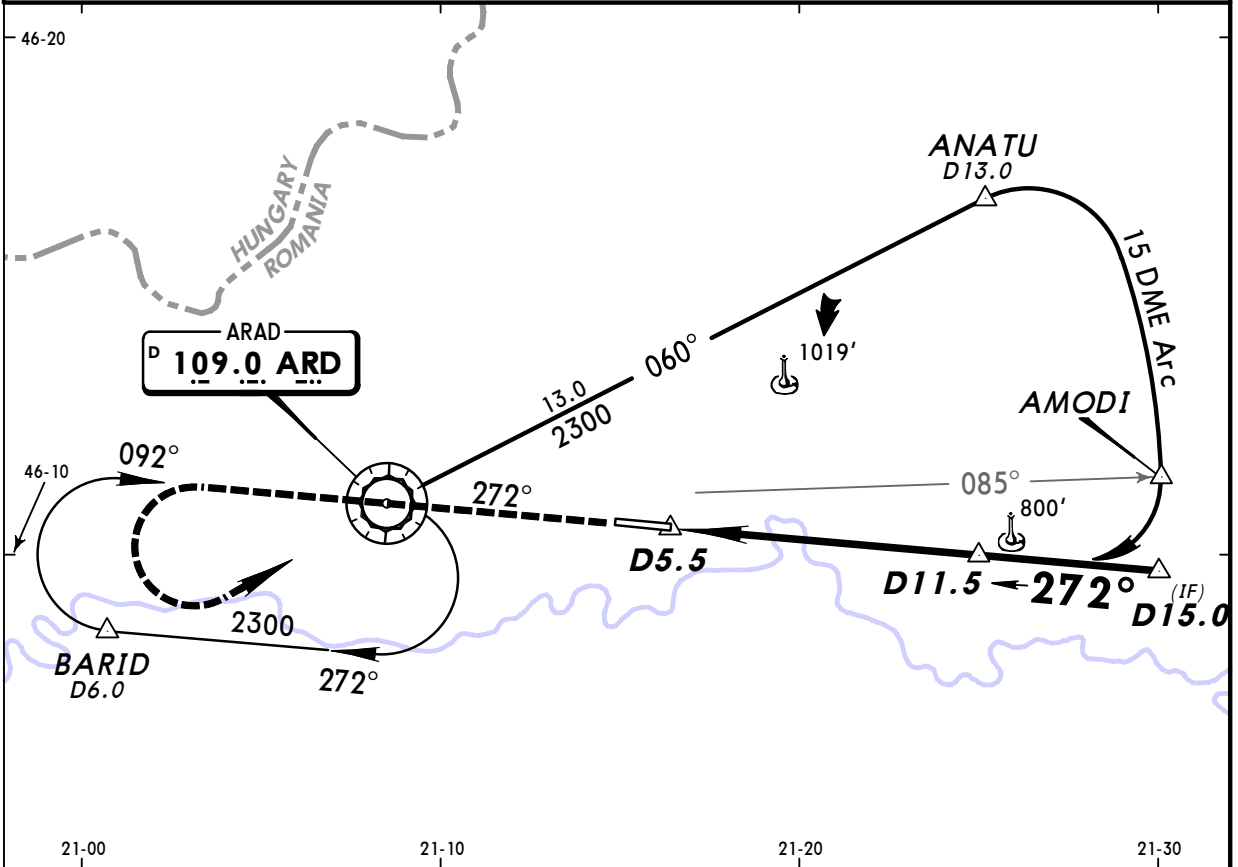


VOR ARD 109.0	Final Apch Crs 272°	Minimum Alt D11.5 2300' (1948')	MDA(H) Refer to Minimums	Apt Elev 352'
----------------------------	----------------------------------	--	--------------------------------	----------------------

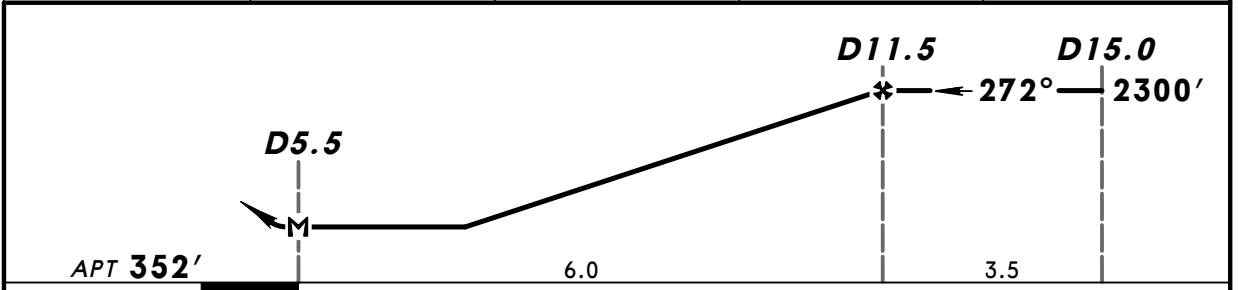
MISSED APCH: Climb STRAIGHT AHEAD to 2300', then turn LEFT and join holding, or as directed.

MSA ARD VOR

Alt Set: hPa (MM on req) Apt Elev: 13 hPa Trans level: By ATC Trans alt: 3000'
Procedure restricted to MAX 210 KT.



ARD DME	7.0	8.0	9.0	10.0
ALTITUDE	830'	1150'	1470'	1790'



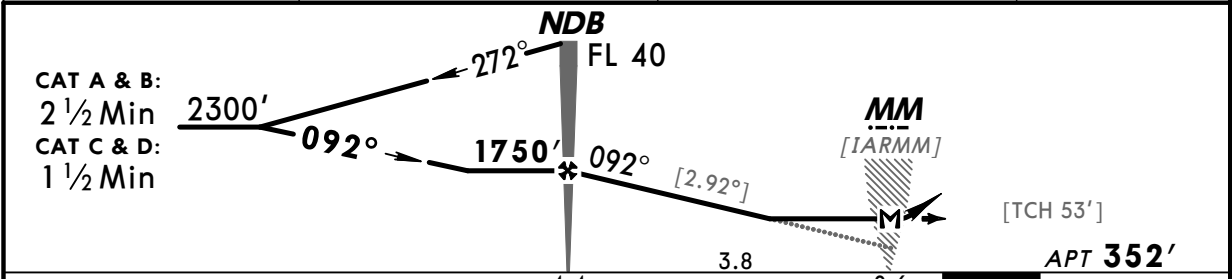
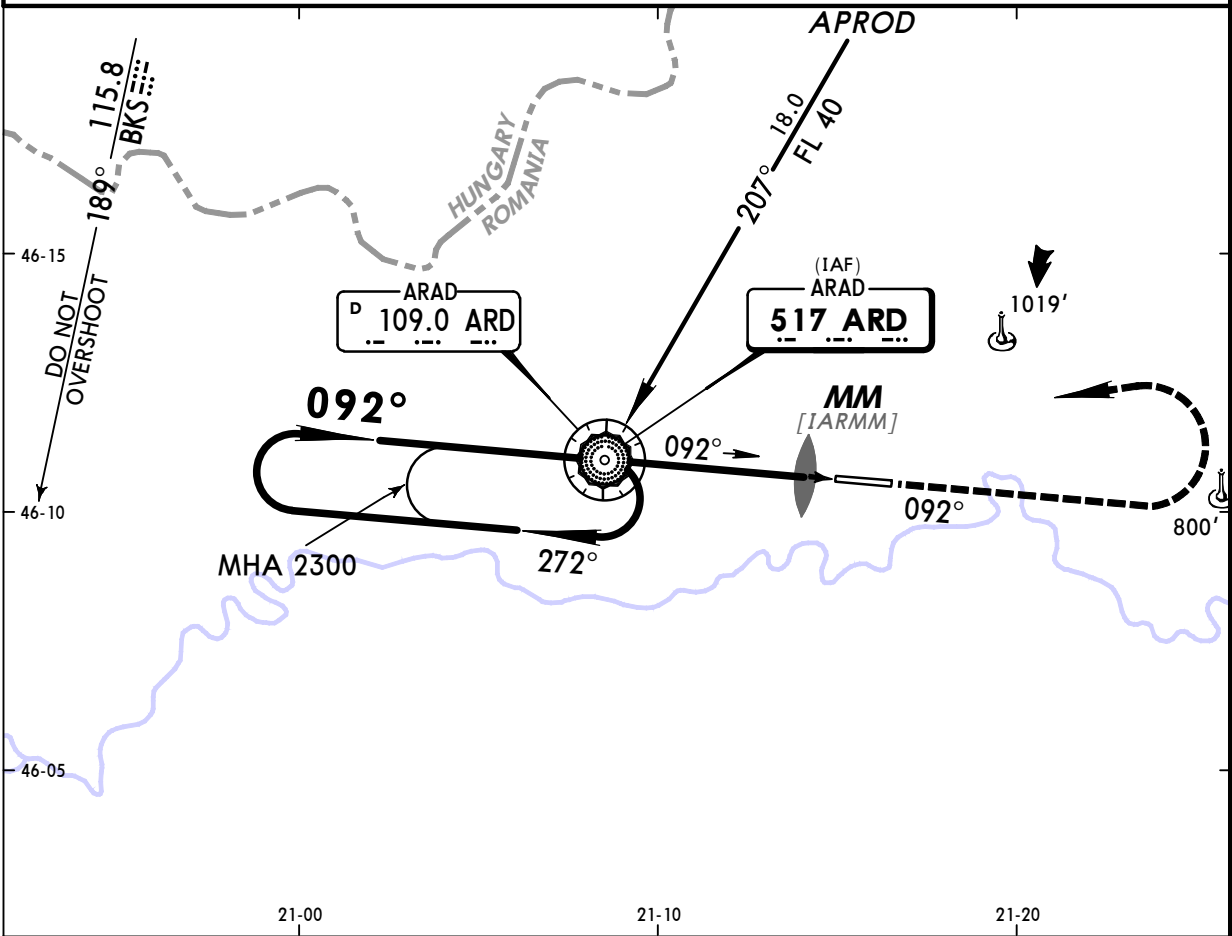
Gnd speed-Kts	70	90	100	120	140	160	HIALS-II PAPI 2300' ↑
Descent Gradient 5.2%	369	474	527	632	737	843	
MAP at D5.5							

JAR-OPS		CIRCLE-TO-LAND		
		Max Kts	MDA(H)	VIS
		A 100	870' (518')	1500m
		B 135	870' (518')	1600m
		C 180	1410' (1058')	2400m
		D 205	1410' (1058')	3600m

NOT FOR OPERATIONAL USE

BRIEFING STRIP™

Approach Control through Tower ARAD Tower 130.2					<p>MSA ARD VOR</p>		
NDB ARD 517	Final Apch Crs 092°	Minimum Alt NDB 1750' (1398')	MDA(H) 800' (448')	Apt Elev 352'			
<p>MISSED APCH: Climb STRAIGHT AHEAD to 2300', then turn LEFT to NDB and hold, or as directed.</p>							
Alt Set: hPa (MM on req)		Apt Elev: 13 hPa		Trans level: By ATC		Trans alt: 3000'	
Procedure restricted to MAX 210 KT.							



Gnd speed-Kts	70	90	100	120	140	160	HIALS 	2300'
Descent gradient 5.10% or Descent angle [2.92°]	362	465	517	620	723	826		↑
MAP at MM								

JAR-OPS STRAIGHT-IN LANDING RWY 09				CIRCLE-TO-LAND			
MDA(H) 800' (448')							
		ALS out		Max Kts	MDA(H)		VIS
A	RVR 900m	RVR 1500m		100	870'	(518')	1500m
B				135	870'	(518')	1600m
C	RVR 1000m	RVR 1800m		180	1410'	(1058')	2400m
D	RVR 1400m	RVR 2000m		205	1410'	(1058')	3600m

NOT FOR OPERATIONAL USE

PANS OPS 4